

COORDINATES: 61°12' 13.44" N
 02°16' 28.56 E

K.B.: 25m

WATER DEPTH: 204m

TOTAL DEPTH: 2250m

DEEPEST FORM. PEN. TRIASSIC

SPUD DATE: JANUARY 7th 1980

RIG RELEASE DATE: MARCH 24th 1980

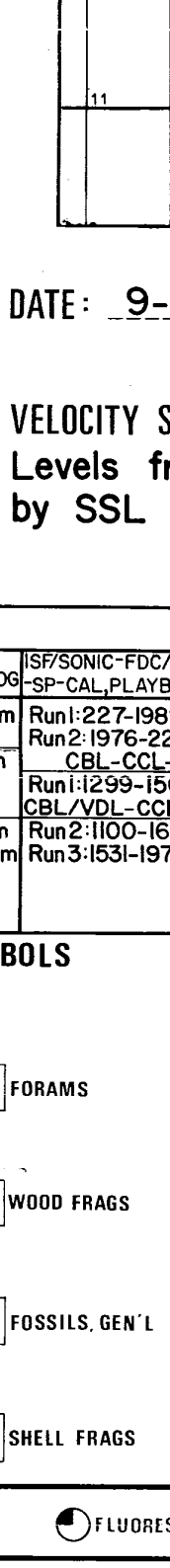
WELL STATUS: TEMP P and A

RIG: ROSS DRILLING CO A/S

CONTRACTOR: SPORTEL, VESTLUND, KRISTENSEN, ROSS, ROYER, SKARBERG, LARSEN

PREPARED BY: T.KRISTENSEN/BRAMMUSSEN

DATE: 9-6-1980



CASING DATA:
 30" at 291.0m
 20" at 832.0m
 13 3/4" at 1565.0m
 9 5/8" at 1692.0m

7" liner at 1977m

VELOCITY SURVEY: 57 checkshots, Levels from 315m to 2245m by SSL

LOGS RUN

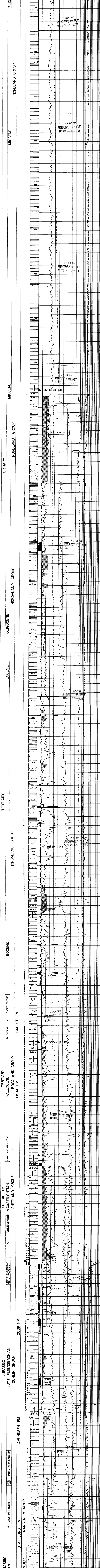
ISF/SONIC-GR-SP	FDC-GR-CAL	DLL-MSFL-GR	SONIC WAVE FROM LOG	SP/SONIC-FDC/CAL-GR	BGT	CCL
Run1 228-845.5m Run2 832-1444.5m Run3 1346-1700.0m Run4 1692-1989.5m Run5 1976-2249.0m Run6 1976-2249.0m	Run1 832-1444.5m Run2 1346-1700.0m Run3 1346-1700.0m Run4 1692-1989.5m Run5 1976-2249.0m Run6 1976-2249.0m	Run1 1692-1989.5m Run2 1976-2249.0m Run3 1976-2249.0m	Run1 1800-1920.0m Run2 1976-2249.0m Run3 1976-2249.0m Run4 1976-2249.0m Run5 1976-2249.0m Run6 1976-2249.0m	Run1 227-989.0m Run2 832-1445.0m Run3 1346-1722.0m Run4 1692-1989.5m Run5 1976-2249.0m Run6 1976-2249.0m	Run1 832-1445.0m Run2 832-1445.0m Run3 1346-1722.0m Run4 1692-1989.5m Run5 1976-2249.0m Run6 1976-2249.0m	Run1 1800-1920.0m Run2 1976-2249.0m Run3 1976-2249.0m Run4 1976-2249.0m Run5 1976-2249.0m Run6 1976-2249.0m

LITHOLOGIC SYMBOLS

SAND SANDSTONE	LIMESTONE	ANHYDRITE	FORAMS	PYRITE	MICA
SILT SILTSTONE	CHALK	COAL LIGNITE	WOOD FRAGS	GLAUCONITE	STYLOLITES
CLAY CLAYSTONE	DOLOMITE	SALT	SHELL FRAGS	SIDERITE	FRACTURES
SHALE	MARL				

COMPUTATION PARAMETERS

Run1	0.8	0.833	1.0	1.1	1.2	1.3	1.4	1.5	1.6	1.7	1.8	1.9	2.0	2.1	2.2	2.3	2.4	2.5	2.6	2.7	2.8	2.9	3.0	3.1	3.2	3.3	3.4	3.5	3.6	3.7	3.8	3.9	4.0	4.1	4.2	4.3	4.4	4.5	4.6	4.7	4.8	4.9	5.0
------	-----	-------	-----	-----	-----	-----	-----	-----	-----	-----	-----	-----	-----	-----	-----	-----	-----	-----	-----	-----	-----	-----	-----	-----	-----	-----	-----	-----	-----	-----	-----	-----	-----	-----	-----	-----	-----	-----	-----	-----	-----	-----	-----



Tests
 DST I (1858-1865m KB)