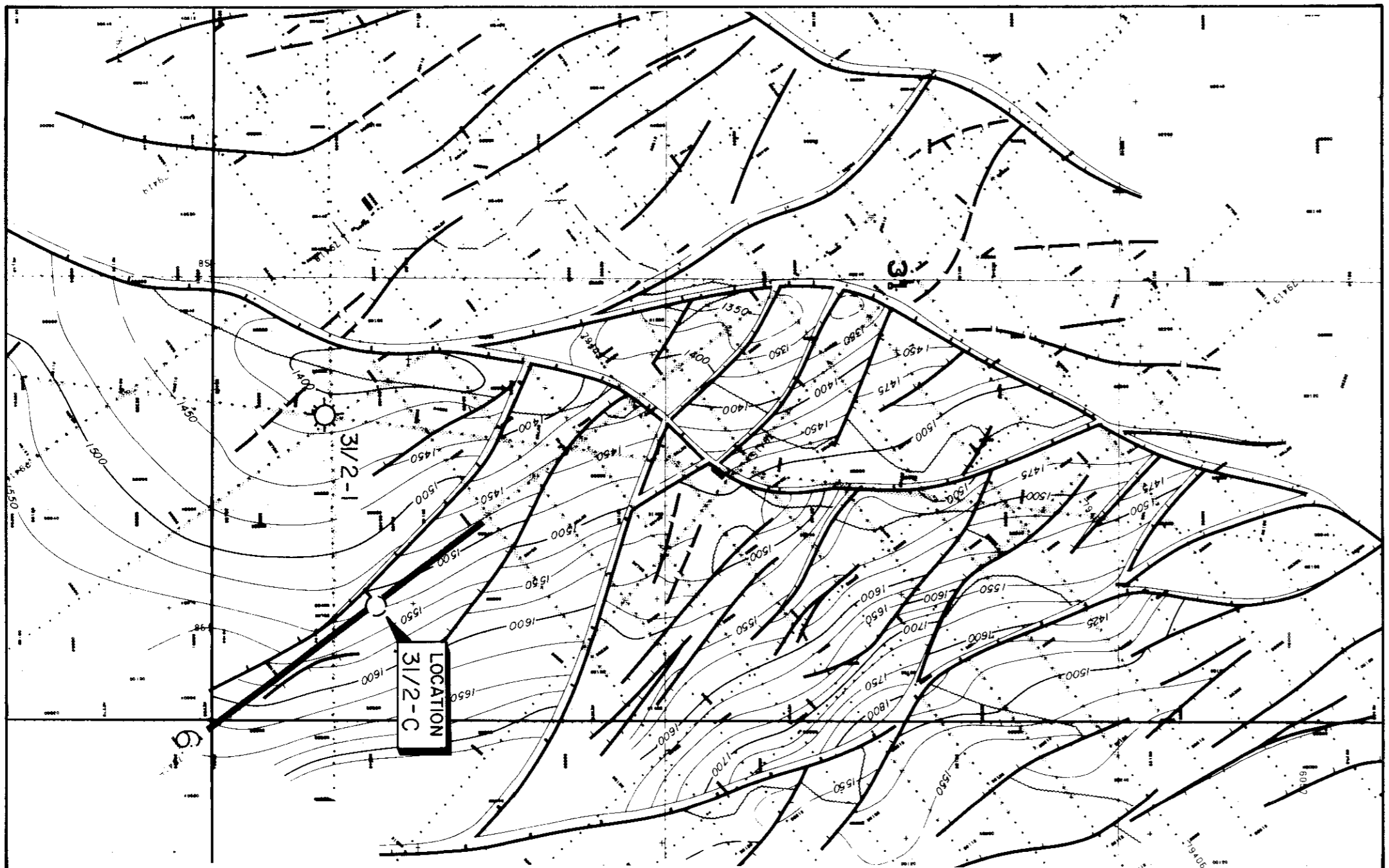
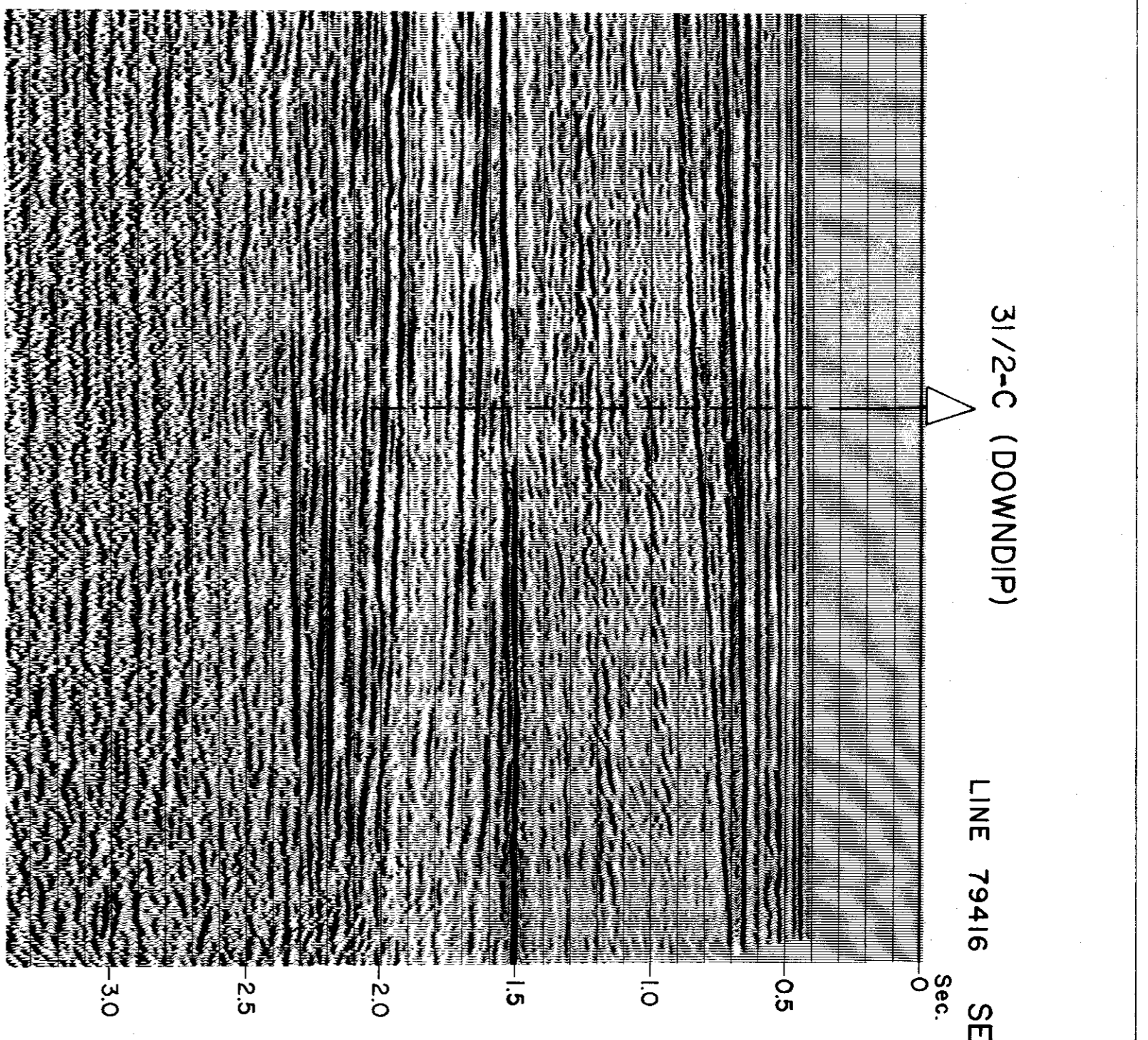


WELL - ARRIVAL Noiske Shell
 3 EXPLORATION & PRODUCTION FORUS
 PROGNOSIS
 31/2-C
 SEISMIC LINE 79416 SP 200
 SCALE 1:2,000,000
 COORDINATES: LAT 60°46'47.1"N LONG 03°37'22.4"E
 ELEVATION OF WPT 328m HIG
 WATER DEPTH 328m SPUDDED
 TOTAL DEPTH 2600m COMPLETE
 TYPE COMPL

DEPTH IN METRES	DEPTH IN FEET	STRATIGRAPHY	ENVIRONM	CASING CORES SWS	LITHOLOGY - INDICATIONS - TEST RESULTS	REMARKS	LOGS
500	1640	QUAT.			SEA BED 328m	NB: ALL DEPTHS ARE SUBSEA	
1000	3280	TERTIARY	Miocene				
1500	4920						
2000	6560	CRET.	Eocene				
2500	8200						
3000	9840						
3500	11480	JURASSIC	Palaeocene		1136m (± 20m) Cst, tuffaceous	"TUFF"	
4000	13120				1353m (± 20m)		
4500	14760				1402m (± 20m) Organic Shale		
5000	16400				1509m (± 10m)	1440	
5500	18040	UPPER	Collovian		1647m GFC 1590m (± 10m)	"Flaispol"	
6000	19680				Sst f, m.l.c, cons. Lst, ss	6/0 1573 6/0 1633	
6500	21320	MIDDLE	Bathonian		1905m (± 30m) Sst, coals, sh.	"b"	
7000	22960				2070m (± 30m) Cst, sst, silty.		
7500	24600	LOWER	Hettangian		2180m (± 30m) Sst, f, m. (cs) fri.	"c"	
8000	26240				2300m (± 30m) Cst, gy, red-brown Sst, f, cfs, fri.		
8500	27880	TRIASSIC					
9000	29520						
9500	31160						
10000	32800						
10500	34440						
11000	36080						
11500	37720						
12000	39360						
12500	41000						
13000	42640						
13500	44280						
14000	45920						
14500	47560						
15000	49200						
15500	50840						
16000	52480						
16500	54120						
17000	55760						
17500	57400						
18000	59040						
18500	60680						
19000	62320						
19500	63960						
20000	65600						
20500	67240						
21000	68880						
21500	70520						
22000	72160						
22500	73800						
23000	75440						
23500	77080						
24000	78720						
24500	80360						
25000	82000						
25500	83640						
26000	85280						
26500	86920						
27000	88560						
27500	90200						
28000	91840						
28500	93480						
29000	95120						
29500	96760						
30000	98400						
30500	100040						
31000	101680						
31500	103320						
32000	104960						
32500	106600						
33000	108240						
33500	109880						
34000	111520						
34500	113160						
35000	114800						
35500	116440						
36000	118080						
36500	119720						
37000	121360						
37500	123000						
38000	124640						
38500	126280						
39000	127920						
39500	129560						
40000	131200						
40500	132840						
41000	134480						
41500	136120						
42000	137760						
42500	139400						
43000	141040						
43500	142680						
44000	144320						
44500	145960						
45000	147600						
45500	149240						
46000	150880						
46500	152520						
47000	154160						
47500	155800						
48000	157440						
48500	159080						
49000	160720						
49500	162360						
50000	164000						



HORIZON 7 & A, TOP RESERVOIR, C 1.25m, I:100 000
BLOCK 31/2