

Denne rapport
tilhører

STATOIL

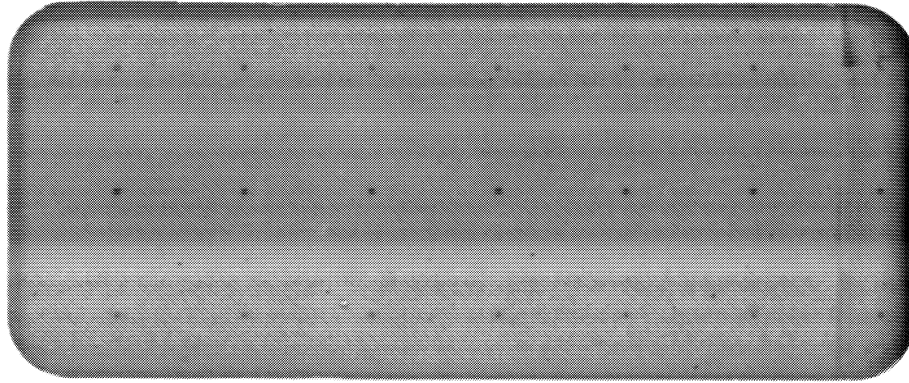
L&U DOK. SENTER

L. NR. 20088390060

KODE Well 31/2-2 nr22

Returneres etter bruk

A-S NORSKE SHELL
EXPLORATION & PRODUCTION FORUS



This is a **CONFIDENTIAL** document. Any distribution beyond the parties listed within must be authorized by the sponsoring or requisitioning company/function. Reference to this document should only be made in documents having the same, or a higher, security classification. All recipients must use its contents with discretion.

SHELL RESEARCH B.V.

KONINKLIJKE / SHELL EXPLORATIE EN PRODUKTIE LABORATORIUM

RIJSWIJK, THE NETHERLANDS

Technical Service Report

October 1980

RKTR 80.165

GEOLOGICAL INVESTIGATIONS OF CORES FROM

WELL 31/2-2, NORWAY

(Interval 1515.0 - 1635.0 m)

by

S. Willis, N.D. Shaw (Norske Shell)

B.K. Levell, A. Beecham, T. Rodenburg (KSEPL)

et al

— Volume 3 —

Sponsor: A.S. Norske Shell

Investigation 9.11.578.

This is a **CONFIDENTIAL** document. Any distribution beyond the parties listed within must be authorized by the sponsoring or requisitioning company/function. Reference to this document should only be made in documents having the same, or a higher, security classification. All recipients must use its contents with discretion.

A.S. NORSKE SHELL
EXPLORATION & PRODUCTION FORUS
NORWAY

KONINKLIJKE/SHELL
EXPLORATIE EN PRODUKTIE LABORATORIUM
RIJSWIJK, THE NETHERLANDS

VOLUME 3

Available for insertion of GECO core photographs
(All participants have received a complete set of
GECO core photographs from Norske Shell)