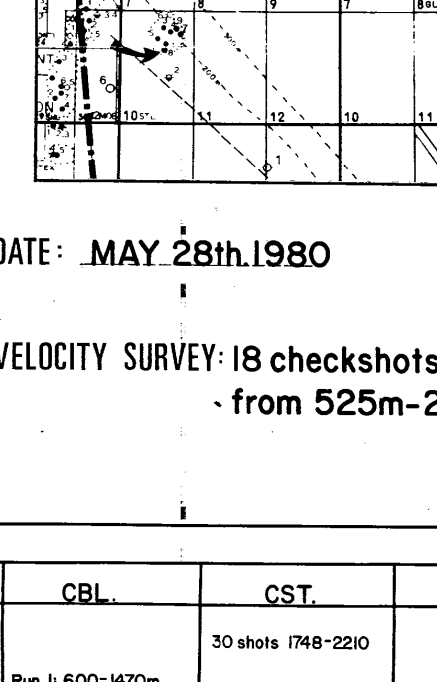




statoil / NORSK HYDRO / SAGA
34/10-8
COMPLETION LOG
 Scale 1:500

PRELIMINARY

COORDINATES: $61^{\circ}09'59.53''N$
 $02^{\circ}12'03.44''E$
 K.B.: 25m
 WATER DEPTH: 133m (MSL)
 TOTAL DEPTH: 2217m (KB)
 DEEP SEAFORM. PEN.: COOK Fm.
 RIG RELEASE DATE: MARCH, 3rd, 1980
 WELL STATUS: P. and A.
 RIG: DEEPSEA SAGA
 CONTRACTOR: GOODWELL DRILLING & CONSULTING CO. A/S
 PREPARED BY: K. Jakobsson, B. Rasmussen
 DATE: MAY 28th, 1980



CASING DATA:
 30" at 217m
 20" at 858m
 13 3/4" at 1470m
 9 3/4" at 1735m
 7" liner at 1917m

VELOCITY SURVEY - 18 checkshots, levels
 from 525m-2210m KB

LOGS RUN

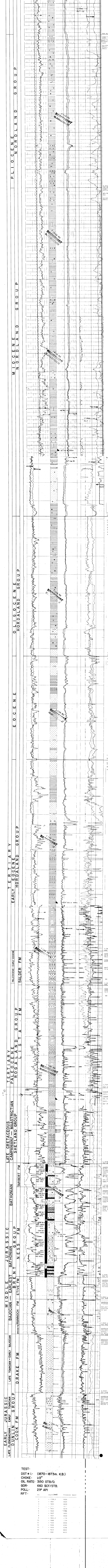
ISF/SONIC-GR-SF	FDC-CAL-GR	DL-L-MSFL-GR	HDT	CBL	CST
Run 1: 206-875m	Run 1: 858-1463m	Run 1: 858-1463m		Run 1: 600-1470m	30 shots PWB-220
Run 2: 858-1463m	FDC-CNL-GR			Run 2: 1365-1727m	
Run 3: 1470-1735m		Run 1: 800-207m		CBL-VOL	
Run 4: 1732-2216m	Run 3: 1732-2216m	Run 1: 1732-2216m		Run 3: 1982-1977m	

LITHOLOGIC SYMBOLS

SAND SANDSTONE	LIMESTONE	ANHYDRITE	FOAMS	PHYRITE	MICA
SILT SILTSTONE	CHALK	COAL LIGNITE	WOOD FRAGS	GLAUCONITE	STYGLITES
CLAY CLAYSTONE	DOLONITE	TUFF	FOSSILS GEN'L	CHERT	BURROWS
SHALE	MARL	SALT	SHELL FRAGS	SIDERITE	FRACURES

RESISTIVITY

SPONTANEOUS POTENTIAL	RESISTIVITY	LITHOLOGY
millivolts	ohms-m	Two way travel time.
	DEEP INDUCTION RESISTIVITY	
	SPHERICALLY FOCUSED RESISTIVITY	
	GAMMA RAY	
	api units	
	INTERVAL TRAVEL TIME Δt	
	microsecond per foot	



TEST # 1: (1870-1873m. K.B.)

CHOKE: 1/2"

OIL RATE: 3150 STB/D.

GOR: 660 SCF/STB.

POLL: 29° API

RFT:

Depth (m)	Pressure (psi)
1799.5	4825
1801	4825
1803	4830
1805	4830
1807	4830
1809	4830
1811	4830
1813	4830
1815	4830
1817	4830
1819	4830
1821	4830
1823	4830
1825	4830
1827	4830
1829	4830
1831	4830
1833	4830
1835	4830
1837	4830
1839	4830
1841	4830
1843	4830
1845	4830
1847	4830
1849	4830
1851	4830
1853	4830
1855	4830
1857	4830
1859	4830
1861	4830