

19-1 COMPLETION LOG

Scale 1:500

COORDINATES: 56°24'05.00"N 02°54'06.00"E
K.B.: 26m
WATER DEPTH: 78m
TOTAL DEPTH: 3706m
DEEPEST FORM. PEN.: Upper Cretaceous
SPUD DATE: Oct. 14, 1976
RIG RELEASE DATE: Feb. 17, 1977
WELL STATUS: Temporarily abandoned
RIG: Ross Rig
CONTRACTOR: Ross Drilling Company A/S
GEOLOGISTS: A. Hage, S.G. Larsen, J. Skjerve, K. Lien, E. Asphaug, E. Lie
PREPARED BY: E. Asphaug / E. Lie
DATE: 22.3.77
BHT: 124°C (255°F)
VELOCITY SURVEY: 23 checkshots levels from 500m to 3705m by Schlumberger.

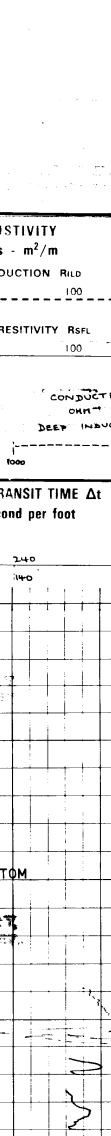
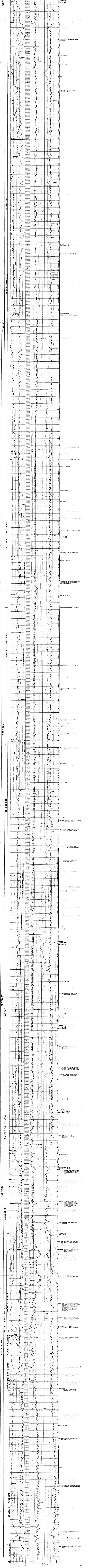


Table with columns: ISF-SONIC (FDC/CNL-GR), IFS-SP, IGS UN. depths in meters (DST-GR, VDL-SONIC), CBL-VDL-GR, HDT, CPI. Rows 1-5.

LITHOLOGIC SYMBOLS: Symbols for Sandstone, Shale, Limestone, Dolomite, Anhydrite, Gypsum, etc.



DEP 1. at 3298-3302 m. Flowed water with oil...
DEP 2. at 3218-3220 m. Flowed water at rate 335 bbl/d on a 3 1/4" choke...
DEP 3. at 3145-3152 m. Flowed water at rate 80 bbl/d on a 3 1/4" choke...
DEP 4. at 3145-3152 m. Before acid (chase 12/24/74)...
DEP 5. at 3129-3133 m. Before acid (chase 12/24/74)...
DEP 6. at 3129-3133 m. Chase 12/24/74...
DEP 7. at 3129-3133 m. Chase 12/24/74...
DEP 8. at 3129-3133 m. Chase 12/24/74...