

COMPLETION LOG
Scale 1:500

COORDINATES: 55° 29' 03.76"N
02° 56' 00.29"E
K.B. DEPTH: 21.5 m
WATER TOTAL DEPTH: 37.0 m (K.B.)
PEA: Zestfish, 56
SPEED FORM: 13 Aug 1977
RELEASE DATE: 13 Jan 1978
WELL STATUS: P
RIG: P-3
CONTRACTOR: Host Drilling Co. A/S
GEOLOGIST: E.M. LANGESEN, S. LANGESEN
PREPARED BY: J. A. AAGA
DATE: 18 April 1978

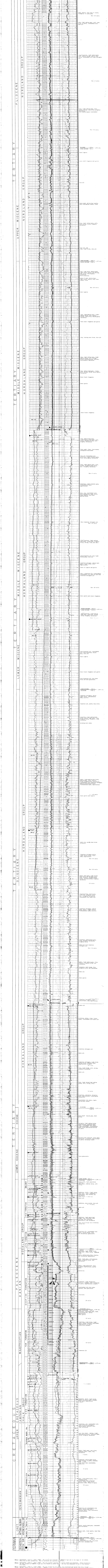
LOGS RUN (depth in meters)

DEPTH (m)	LOG TYPE	LOG NO.	LOG NAME
0 - 100	GR-1	179-4-1	GR-1
100 - 200	GR-2	179-4-2	GR-2
200 - 300	GR-3	179-4-3	GR-3
300 - 400	GR-4	179-4-4	GR-4
400 - 500	GR-5	179-4-5	GR-5
500 - 600	GR-6	179-4-6	GR-6
600 - 700	GR-7	179-4-7	GR-7
700 - 800	GR-8	179-4-8	GR-8
800 - 900	GR-9	179-4-9	GR-9
900 - 1000	GR-10	179-4-10	GR-10

LITHOLOGICAL SYMBOLS

SYMBOL	DESCRIPTION
[Symbol]	SAND
[Symbol]	SANDSTONE
[Symbol]	SILTSTONE
[Symbol]	CLAYSTONE
[Symbol]	SHALE
[Symbol]	SLT. SAND
[Symbol]	SLT. SANDSTONE
[Symbol]	SLT. SILTSTONE
[Symbol]	SLT. CLAYSTONE
[Symbol]	SLT. SHALE
[Symbol]	SLT. SANDSTONE
[Symbol]	SLT. SILTSTONE
[Symbol]	SLT. CLAYSTONE
[Symbol]	SLT. SHALE
[Symbol]	SLT. SANDSTONE
[Symbol]	SLT. SILTSTONE
[Symbol]	SLT. CLAYSTONE
[Symbol]	SLT. SHALE

VELOCITY SURVEY:
SHELL OIL COMPANY
DATE: 18 April 1978



179-4-1 perforated from 312 to 370 m (K.B.). The cement plug contained 20000 g of sand and 100 g of oil. The sand was a mixture of 50% quartz and 50% calcite. The oil was a mixture of 50% oil and 50% water. The test was conducted at 100°C and 10 MPa. The test was conducted at 100°C and 10 MPa. The test was conducted at 100°C and 10 MPa.