

26 JULI 1984

EPX FILE NO: 300.2

CTION BY: EPXT

WORK COPY TO: EPX, [REDACTED]
EPXE/1/11/2/26

CIRC. COPY TO: EPF, EPFF/11

08.50 *
33046a shelp n

31005 SHELL NL
ZCZC TXI120 260852 INR005 MP
RR HRIJ XFOR HHAG

Copy

EPPP/23

FROM KONSHELLAB RIJSWIJK LRE/4 ++
TO SHELL E AND P FORUS EPX EPXT EPX EPXE/1/11/2/26 EPFF/11 ++
COPY SIPM THE HAGUE EP/11/13 ++

REF RIJ1448 26/7/84

CONFIDENTIAL

GEOCHEMICAL ANALYSIS CRUDE OIL WELL 2/5-7, 3263-3287 M

RIJ 1078 OF 10/7/84, FOR 240229 OF 24/02/84

GEOCHEMICAL ANALYSIS OF CRUDE OIL FROM WELL 2/5-7 (3263-3287 M)
HAS BEEN CARRIED OUT. THE RESULTS ARE SHOWN IN TABLES 1 AND 2
AND FIGS 1 AND 2 WHICH WE ARE SENDING YOU SEPARATELY (3 COPIES
SIPM, 3 COPIES SHELL FORUS).

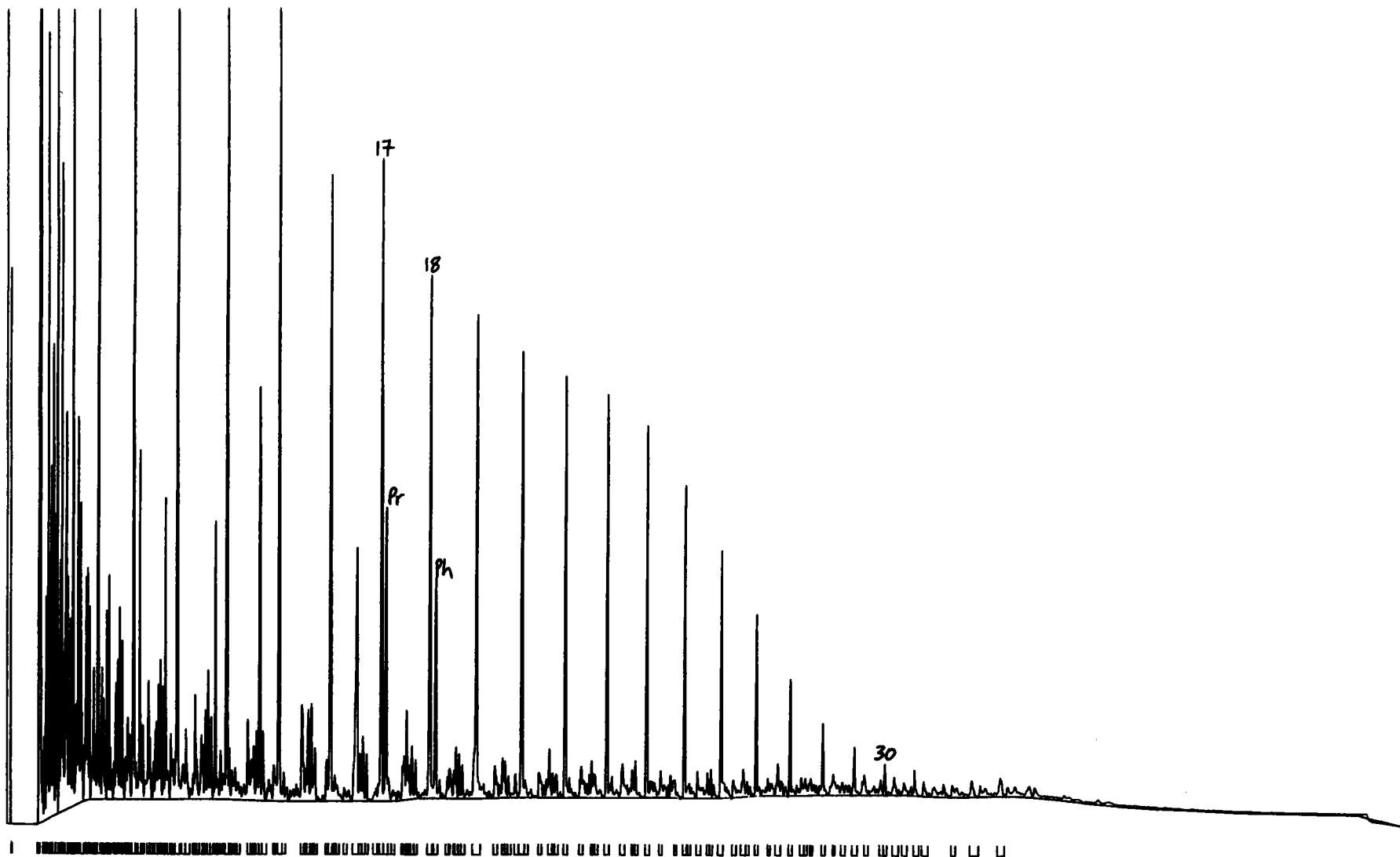
THESE RESULTS INDICATE THAT THE CRUDE OIL HAS NOT BEEN BACTERIALLY
(CONTINUED)

(RIJ1448/2) CONFIDENTIAL
DEGRADED AND WAS GENERATED FROM A MATURE (SHALY) SOURCE ROCK
CONTAINING STRUCTURELESS ORGANIC MATTER OF BACTERIALLY REWORKED
PHYTOPLANKTONIC ORIGIN.
THE GEOCHEMICAL DATA INDICATES THAT THIS CRUDE OIL IS VERY
SIMILAR IN COMPOSITION TO A CRUDE OIL FROM WELL 2/5-7 (3300-3335 M)
REPORTED IN RKTR 84.167.



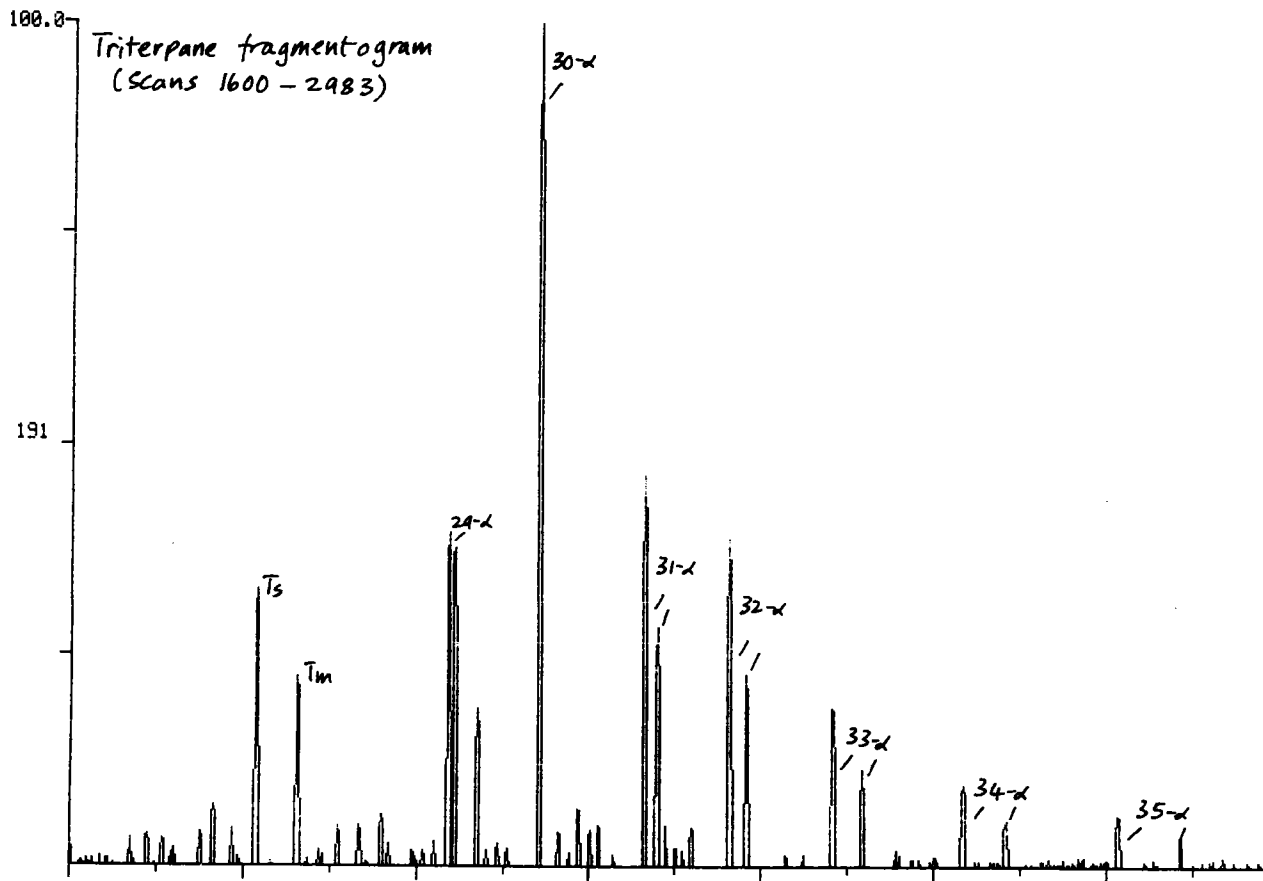
RECEIVED
EPX
EPF

NNNN*
33046a shelp n

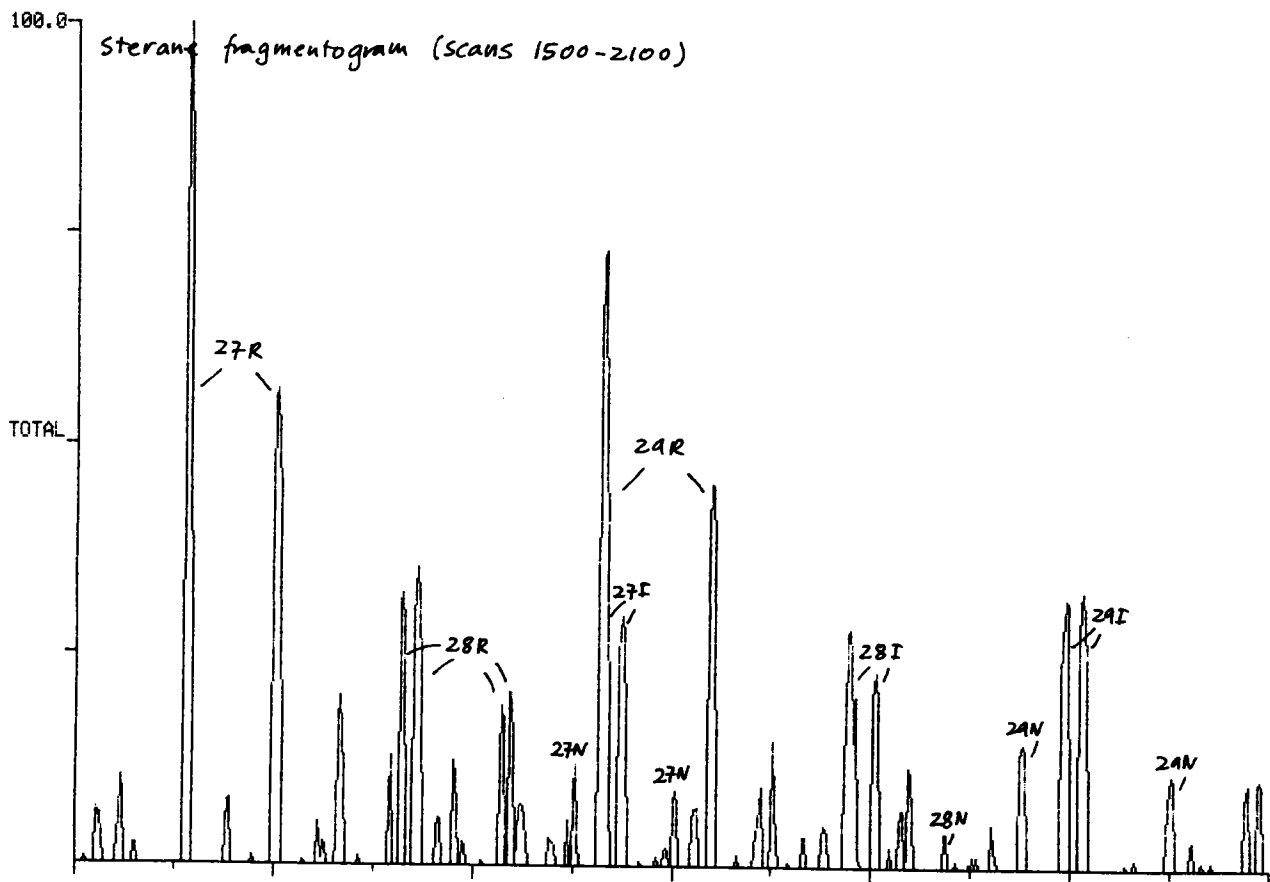


GAS CHROMATOGRAM OF SATURATED HYDROCARBONS

NORWAY 2/5-7 3263-3287 FT OMC 3295



8735



6192

GC-MS analysis Crude oil well 2/5-7, 3263-3287 m (OMC 3295) NORWAY

Fig. 2

Table-1 GEOCHEMICAL DATA OF CRUDE OIL
WELL 2/5-7 (3263-3287 M) NORWAY
OMC 3295

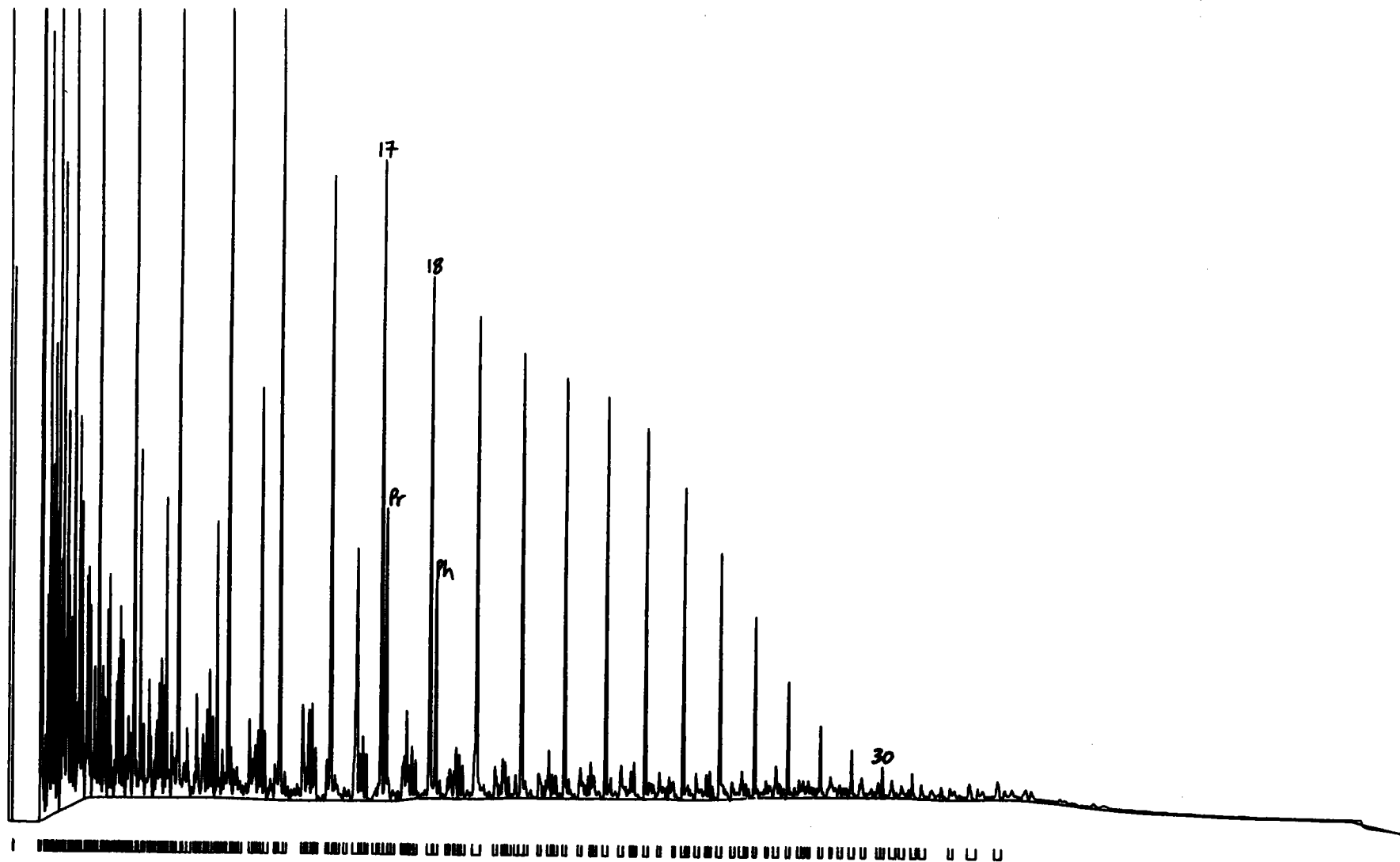
API	40.7
specific gravity	0.8219
%w. boil. 120°C	12.6
% sulphur	0.1
ppm V as metals	0.2
ppm Ni as metals	0.7
Pristane/phytane	1.4
Pristane/nC17	0.6
Phytane/nC18	0.5
C7-distribution	
C7-alkane	
nC7	54
monobranched	36
polybranched	10
C7-alk/naphthene	
nC7	29
naphthenes	46
branched alkanes	25
C7-alk/naphth/arom	
nC7	49
naphthenes	41
aromatics	10
C15-distribution	
1-ring	
2-ring	
3-ring	
C30-distribution	
3-ring	
4-ring	
5-ring	
C29 DOM	
% asphaltenes	
** % saturates	67
% aromatics	28
% heterocompounds	5
% rest	--
$\delta^{13}\text{C}$ ‰	- 28.2

** Determined by column chromatography

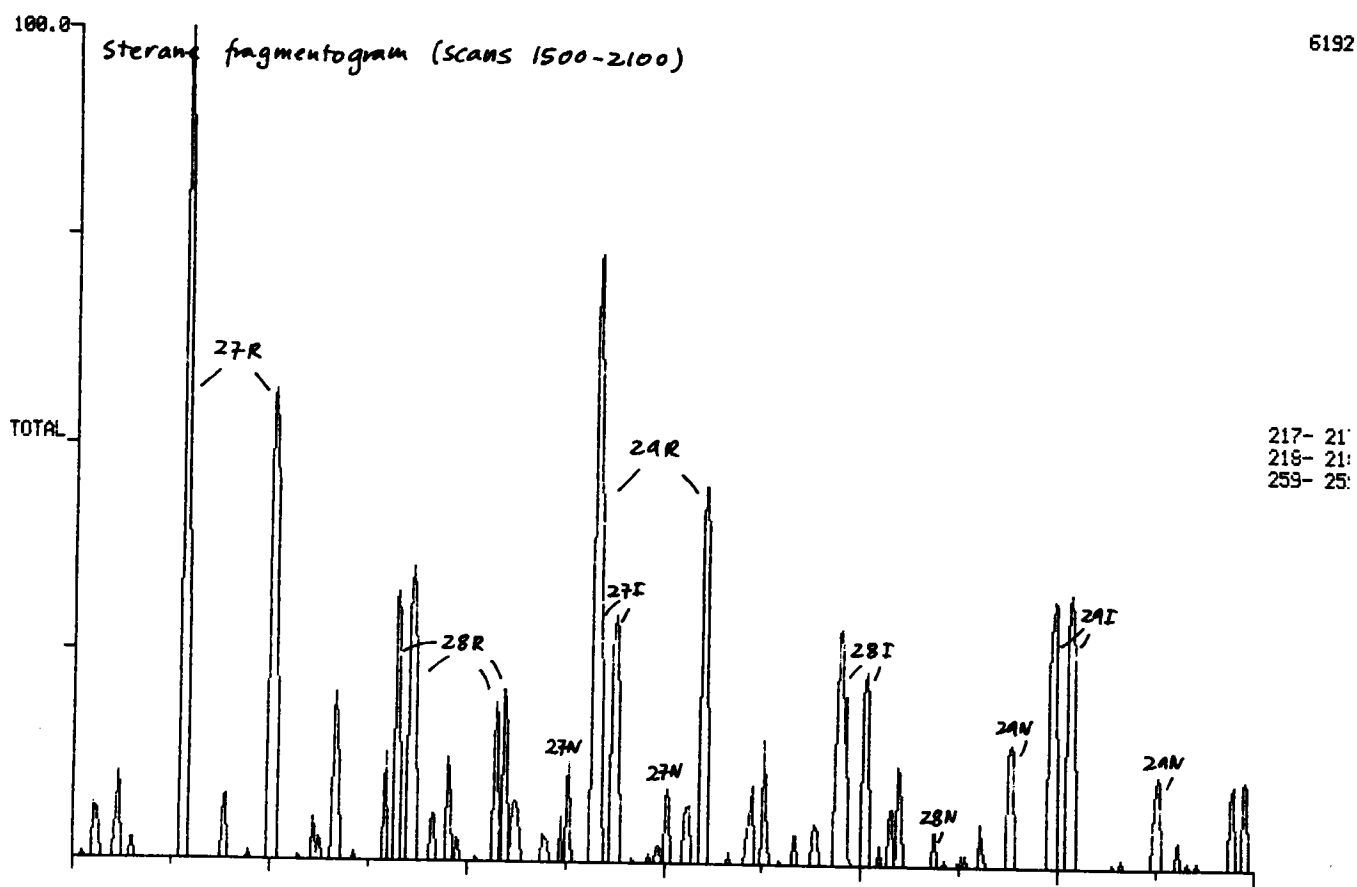
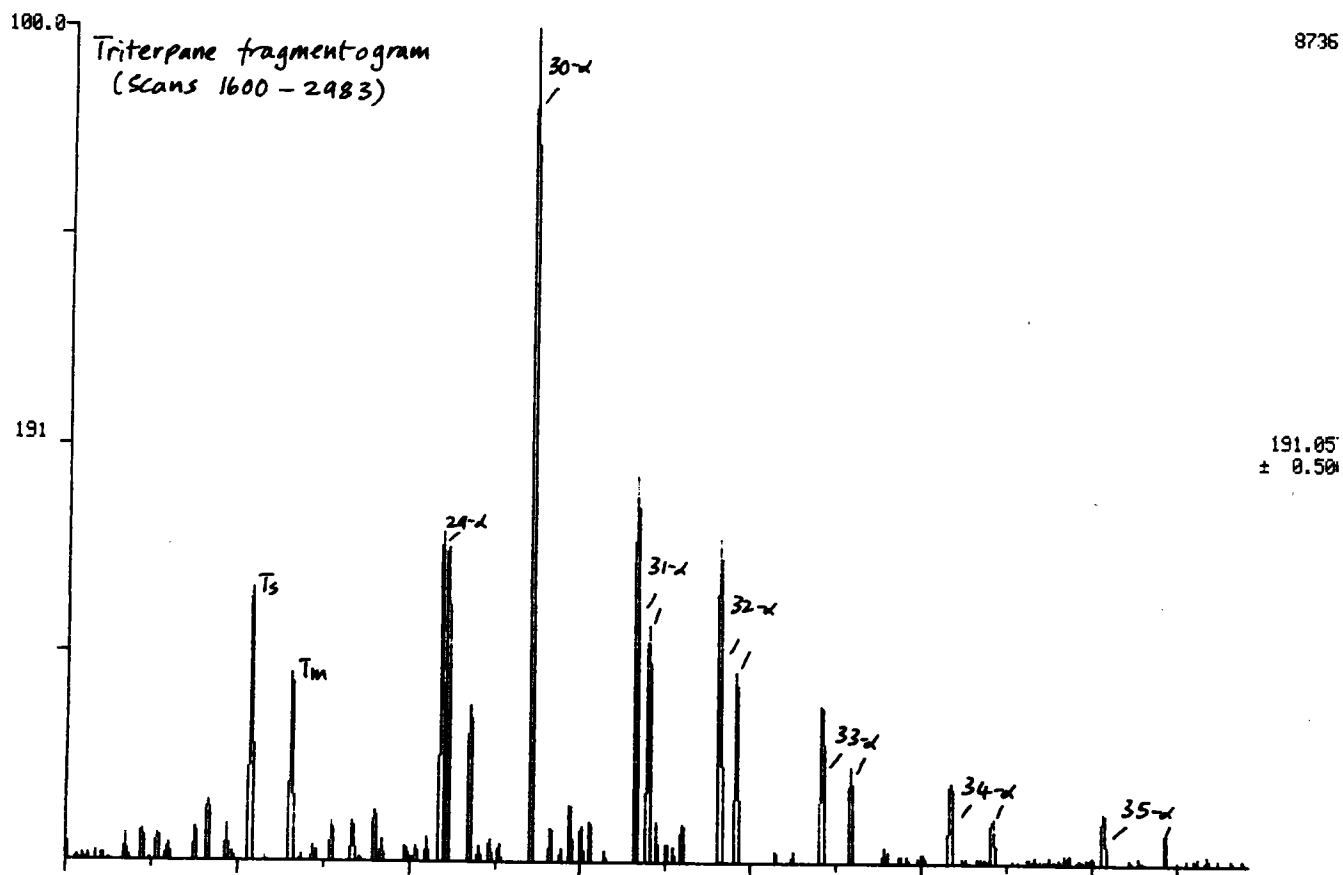
Table 2 GC-MS data Well 2/5-7, NORWAY

3263 - 3287 M
OMC 3295

Sterane/triterpane diagram	
% iso-steranes	24
% rearranged-steranes	62
% triterpanes	14
Sterane diagram	
% iso-steranes	33
% rearranged-steranes	59
% normal-steranes	8
Sterane carbon number distribution	
% C-27	38
% C-28	27
% C-29	35



GAS CHROMATOGRAM OF SATURATED HYDROCARBONS
NORWAY 2/5-7 3263-3287 FT OMC 3295



GC-MS analysis Crude oil well 2/5-7, 3263-3287 m (OMC 3295) NORWAY

Fig. 2

Table-1 GEOCHEMICAL DATA OF CRUDE OIL
WELL 2/5-7 (3263-3287 M) NORWAY
OMC 3295

API	40.7
specific gravity	0.8219
%w. boil. 120°C	12.6
% sulphur	0.1
ppm V as metals	0.2
ppm Ni as metals	0.7
Pristane/phytane	1.4
Pristane/nC17	0.6
Phytane/nC18	0.5
C7-distribution	
C7-alkane	
nC7	54
monobranched	36
polybranched	10
C7-alk/naphthene	
nC7	29
naphthenes	46
branched alkanes	25
C7-alk/naphth/arom	
nC7	49
naphthenes	41
aromatics	10
C15-distribution	
1-ring	
2-ring	
3-ring	
C30-distribution	
3-ring	
4-ring	
5-ring	
C29 DOM	
% asphaltenes	
** % saturates	67
% aromatics	28
% heterocompounds	5
% rest	--
$\delta^{13}\text{C}$ ‰	- 28.2

** Determined by column chromatography

Table 2 GC-MS data Well 2/5-7, NORWAY

3263 - 3287 M
OMC 3295

Sterane/triterpane diagram	
% iso-steranes	24
% rearranged-steranes	62
% triterpanes	14
Sterane diagram	
% iso-steranes	33
% rearranged-steranes	59
% normal-steranes	8
Sterane carbon number distribution	
% C-27	38
% C-28	27
% C-29	35