

Plate: 26786 Units: M () Depth: 1570 Bottom: 11000 Scale: 1:500

DIGITAL WIRELINE LOGS PACKAGE 1000 This image may not be used or reproduced without the written permission of SIMON PETROLEUM TECHNOLOGY

COMPLETION LOG

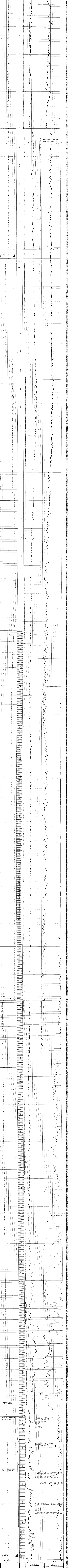
PHILLIPS PETROLEUM COMPANY COMPOSITE LOG COMPANY: 217-5-1000 WELL NUMBER: 217-5-1000 CO-ORDINATES: Lat. 40° 21' 13" N Long. 102° 29' 28" W COUNTRY: USA PRODUCTION LICENCE: 218 LICENCE BLOCK: 2 DATE SPUNDED: 4 Oct. 1972 DATE COMPLETED: 31 Dec. 1972 ELEVATION-KB: 1027 OF WATER DEPTH: 237' TOTAL DEPTH: 1570' PBTD: STATUS: P & A CASING RECORD: 1.5" 5/8" at 1030', 2 1/2" at 1570', 3 3/8" at 1292' GEOLOGIST: W.D. Byrd, T. Walsman

REMARKS TESTING AND COMPLETION SUMMARY

LEGEND Limestone, Dolomite, Argillaceous Limestone, Silty Limestone, Limestone (with fossiliferous), Marl, Gypsum, Anhydram, Salt (NaCl), Salt casts, Polysulfide, Sulfate (potassium salts), Conglomerate, Breccia, Granite Wash (Arkose), Sandstone, Siltstone, Silty Shale, Siltstone, Shale (light grey, green, red, grey, black), Carbonaceous Shale, Dolomitic Shale, Coal, Lignite, Chert, Bauxite

WELL HISTORY AND DRILLING RATE, LITHOLOGIC DESCRIPTION, CORES AND TESTS

SPONTANEOUS POTENTIAL, RESISTIVITY, CONDUCTIVITY



Summary table for SPONTANEOUS POTENTIAL, RESISTIVITY, and CONDUCTIVITY with well details.