

COMPLETION LOG

PHILLIPS PETROLEUM COMPANY
COMPOSITE LOG

COMPANY: PHILLIPS PETROLEUM COMPANY WELL NUMBER: 217-7
 CO-ORDINATES: 10° 11' 30" N 104° 00' 00" W
 DATE SPUED: 10/00 DATE COMPLETED: March 23, 1973
 ELEVATION KB: 89' DF: 93' WATER DEPTH: 230'
 TOTAL DEPTH: 10,118' PBTD: 264.33' STATUS: P.A.A.
 CASING RECORD: 30" at 432', 20" at 1598', 13 3/8" at 3,992',
 9 5/8" at 10,467'

GEOLOGIST: J. Robinson, F. Holsinger, J. Parada
 REMARKS: Rig: "Ocean Viking"
 TESTING AND COMPLETION SUMMARY:

LEGEND

<ul style="list-style-type: none"> Limestone Dolomite Dolomitic Limestone Argillaceous Limestone Silty Limestone Sandy Limestone Chalky Limestone Chalk Marl Gypsum Anhydrite Salt (NaCl) Salt casts Pyhalite, tyolite (potassium salts) 	<ul style="list-style-type: none"> Conglomerate Brachiopods Granolite (Akwah) Sandstone Siltstone Sandy Shale Silty Shale Shaly Clay Shale Claystone Calcareous Shale Dolomitic Shale Coal, Lignite Bentonite 	<ul style="list-style-type: none"> Thinly bedded (5-15%) Oil Stain or Oil Fluorescence Gas show (Mud or Cuttings) Gas (surface D.S.T.) Sulphides Pyrite Glauconite Siderite Limonite Nodules Phosphate Carbonate Nodules No Samples
--	---	---

SCALE 1:500

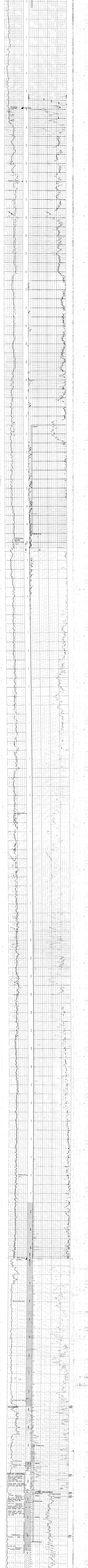
WELL HISTORY AND DRILLING RATE
 Minutes / 5 Feet

DEPTH AND GRAPHIC
 FEET

LITHOLOGIC DESCRIPTION

CORES AND TESTS

INTERVAL TRANSIT TIME
 MICROSECONDS PER FOOT



COMPANY: PHILLIPS PETROLEUM COMPANY
 WELL: 217-7E
 FIELD: SLEWICK
 COUNTY: NIMBLETT
 STATE: NORTH DAKOTA

DATE: 10/00
 SCALE: 1:500
 SHEET NO.: 431