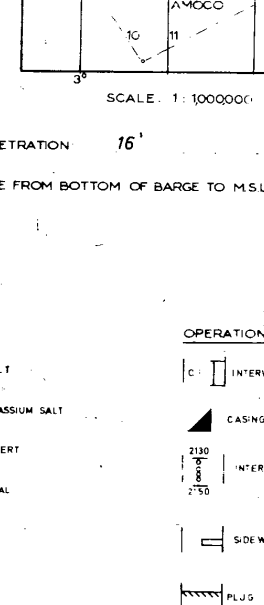


DIGITAL WIRELINE LOGS PACKAGE
This log may not be used or reproduced without permission of SIMON PETROLEUM TECHNOLOGY

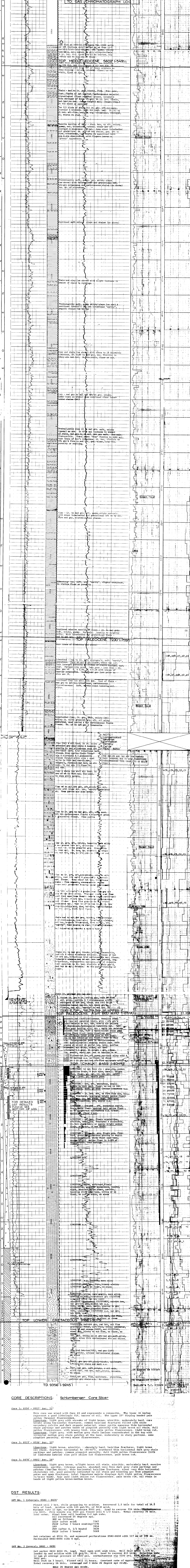
COMPLETION LOG

AMOCO NORWAY OIL CO.
FINAL WELL LOG
2/8-4
VERTICAL SCALE: 1:500

LOCATION: 56° 17' 53.8" N 03° 20' 38.0" E
 AREA: OFFSHORE NORWEGIAN NORTH SEA
 DATE: 28 April 1979
 LOG NO.: 229
 DATE PRINTED: 7 June 1979
 TOTAL DEPTH: 9266'
 PLUGBACK TOTAL DEPTH: 400'
 CASING: 36" at 483 20" at 1225' 13 3/8" at 5200' 9 5/8" at 8263'
 7" liner at 9019' top at 8050'
 RIG TYPE: Jackup
 LEG PENETRATION: 16'
 CLASSIFICATION WHEN STARTED: Wildcat
 DISTANCE FROM BOTTOM OF BARGE TO MSL: 60'
 CLASSIFICATION AFTER COMPLETION: P & A
 METHOD OF COMPLETION: ISM



- | LITHOLOGIC SYMBOLS | | OPERATIONAL SYMBOLS | |
|--------------------|---------------------|---------------------|--|
| | SANDSTONE | | OIL COLUMN |
| | SHALE | | GAS COLUMN |
| | LIMESTONE | | MUDSTONE |
| | GYPSIFEROUS SHALE | | FRacture |
| | CHALK | | Wellbore |
| | CLAYSTONE | | Mudstone with Fracture |
| | SILTSTONE | | Mudstone with Fracture and Oil |
| | MOTTLED SANDSTONE | | Mudstone with Fracture and Gas |
| | SAND | | Mudstone with Fracture and Oil and Gas |
| | SILT | | Mudstone with Fracture and Oil and Gas and Water |
| | CLAY | | Mudstone with Fracture and Oil and Gas and Water and Slime |
| | SHALE with Fracture | | Mudstone with Fracture and Oil and Gas and Water and Slime and Scale |



CORE DESCRIPTIONS: Schlumberger Core Slicer
 Core 1: 8554' - 8557' Rec. 11'
 This core was mixed with Core 12 and represents a composite. The lower 16 inches represent a good lithologic fit, barren of oil. The upper 15" display banded pale yellow limestone with streaks of light brown, micritic, moderately hard, core breaks along horizontal fractures, common hairline fractures filled with white secondary calcite and dark organic material, minor porosity numerous thin horizontal shale partings and patches of pinpoint porosity with light brown oil stain, dull yellow fluorescence (to base) light yellow low cut fluorescence, pale brown cut, light brown cut limestone matrix with medium grey shale laminae concentrated in the top with irregular medium grey shale patches at the base, moderately to very minor porosity, non-porosity, non-very minor fluorescence.

DST RESULTS:
 Run No. 1 Interval: 8540 - 8604'
 This was a flow test. Well prepared to acidize. Recovered 1.5 bbls for total of 14.4 bbls of load. Maximum rate 135 gal/hr, of 92-8 acid. Minimum rate 125 gal/hr. Maximum pressure 5000 psi. Load to recover 413 bbls. Perforation 12 bpm at average pressure of 4500 psi. Instantaneous sip 5100 psi. Flow control sip 3600 psi. Final hour well heading 60° up rate.
 OIL recovered 23 degrees API.
 MHP as follows:
 FFP (after acid) 7347
 FFP (after 3 hours soaking) 7278
 FFP (after 2 hours soak) 7314
 FFP (after 6 1/2 hours) 3750
 FFP (after 3 hours) 6069