

Esso Exploration and Production Norway Inc.
COMPLETION LOG
 LICENCE 098 ROUND: 8
Esso **7120/10-1**

SCALE 1:500

LOCATION COORDINATES
 LATITUDE 60°30'N
 LONGITUDE 02°30'E
 UTM X 300000
 UTM Y 6500000
 ELEVATION 200m
 WATER DEPTH 200m
 TOTAL DEPTH 3000m

OPERATOR: Esso
 ARRIVED ON: 2005.10.10
 DEPARTED: 2005.10.10
 REACH TO: 30°
 RIG RELEASE: 20°
 WELLS STATUS: P.A.
 WIRE LOGGED BY: Esso
 PREPARED BY: R. J. LARSEN
 DATE: 2005.10.10

FORMATION AT TOTAL DEPTH: STRATIGRAPHIC

LOG NO.	DATE	INTERVAL (M)	DEPTH (M)	LOG TYPE	LOG NO.	DATE	INTERVAL (M)	DEPTH (M)	LOG TYPE
1	2005.10.10	0-1000	0-1000	LOG	1	2005.10.10	0-1000	0-1000	LOG
2	2005.10.10	1000-2000	1000-2000	LOG	2	2005.10.10	1000-2000	1000-2000	LOG
3	2005.10.10	2000-3000	2000-3000	LOG	3	2005.10.10	2000-3000	2000-3000	LOG

LITHOLOGY SYMBOLS

- CONGLOMERATE
- SANDSANDSTONE
- SILT/SILTSTONE
- CLAY/CLAYSTONE
- SHALE
- LIGHTFOCAL CARBONACEOUS BITUMINOUS
- TUFF
- MACRO/MICRO FOSSILS
- CHERT/CLAY
- SLT/CLAY
- LMSTONE
- DOLOMITE
- CHALK
- MARL
- SALT
- ANHYDRITE

HYDROCARBON INDICATION

- SHOW OR STAIN
- CUT
- FLOURDESCENCE
- GAS SHOW

CORED INTERVAL

- (NO RECOVERY)
- RECOVERED
- REC. WITH LOSS
- PERFORATION INTERVAL
- CEMENT PLUG INTERVAL

DST

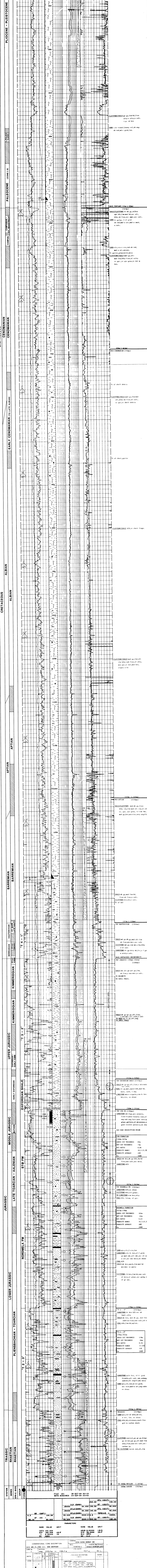
- ROUGH HOLES
- OPEN HOLE
- RE-DRILL
- REFRIT

WELL SUMMARY

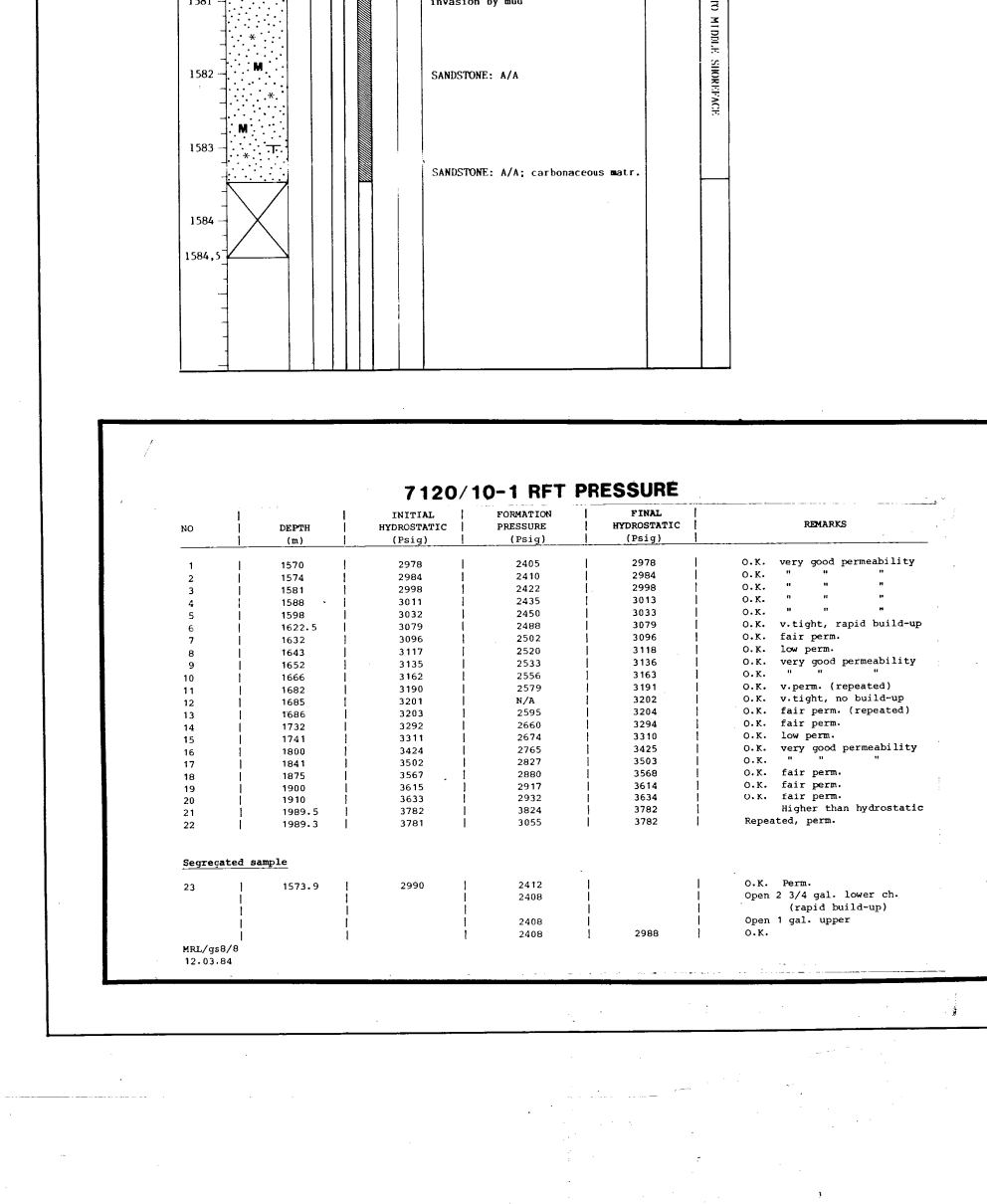
OBJECTIVE TO TEST - 1. STRATIGRAPHIC
 2. PERFORATION
 3. PRODUCTION
 4. FLOW TEST

RESULTS: NO HYDROCARBONS INDICATED
 SAMPLES FROM 1500m to 1950m
 @ 1500m

SYSTEM	SERIES	EPHE	BIRTHY	GROUP	FORMATION
QUATERNARY					
TERTIARY	PALEOCENE - EOLISTOCENE				
CRETACEOUS	CENOMANIAN				
CRETACEOUS	ALBIAN				
CRETACEOUS	APTIAN				
CRETACEOUS	BARREMIAN				
JURASSIC	UPPER JURASSIC				
JURASSIC	MIDDLE JURASSIC				
JURASSIC	LOWER JURASSIC				
TRIASSIC	RHAEITIAN				



NAME	VALUE	UNIT	NAME	VALUE	UNIT
DEPTH	3000	M	WELL	7120/10-1	
DATE	2005.10.10		LOG NO.	101	
TIME	04:45		SR	100.00	
SR	100.00		SR (GPR)	100.00	
SR (GPR)	100.00		SR (GPR)	100.00	
SR (GPR)	100.00		SR (GPR)	100.00	



NO	DEPTH (M)	DENSITY (g/cm3)	SPEED (m/s)	TEMP (C)	RESISTIVITY (ohm-m)	GRAB
1	1200	2.65	3000	20	100	0.0
2	1210	2.65	3000	20	100	0.0
3	1220	2.65	3000	20	100	0.0
4	1230	2.65	3000	20	100	0.0
5	1240	2.65	3000	20	100	0.0
6	1250	2.65	3000	20	100	0.0
7	1260	2.65	3000	20	100	0.0
8	1270	2.65	3000	20	100	0.0
9	1280	2.65	3000	20	100	0.0
10	1290	2.65	3000	20	100	0.0
11	1300	2.65	3000	20	100	0.0
12	1310	2.65	3000	20	100	0.0
13	1320	2.65	3000	20	100	0.0
14	1330	2.65	3000	20	100	0.0
15	1340	2.65	3000	20	100	0.0
16	1350	2.65	3000	20	100	0.0
17	1360	2.65	3000	20	100	0.0
18	1370	2.65	3000	20	100	0.0
19	1380	2.65	3000	20	100	0.0
20	1390	2.65	3000	20	100	0.0
21	1400	2.65	3000	20	100	0.0
22	1410	2.65	3000	20	100	0.0
23	1420	2.65	3000	20	100	0.0
24	1430	2.65	3000	20	100	0.0
25	1440	2.65	3000	20	100	0.0
26	1450	2.65	3000	20	100	0.0
27	1460	2.65	3000	20	100	0.0
28	1470	2.65	3000	20	100	0.0
29	1480	2.65	3000	20	100	0.0
30	1490	2.65	3000	20	100	0.0
31	1500	2.65	3000	20	100	0.0