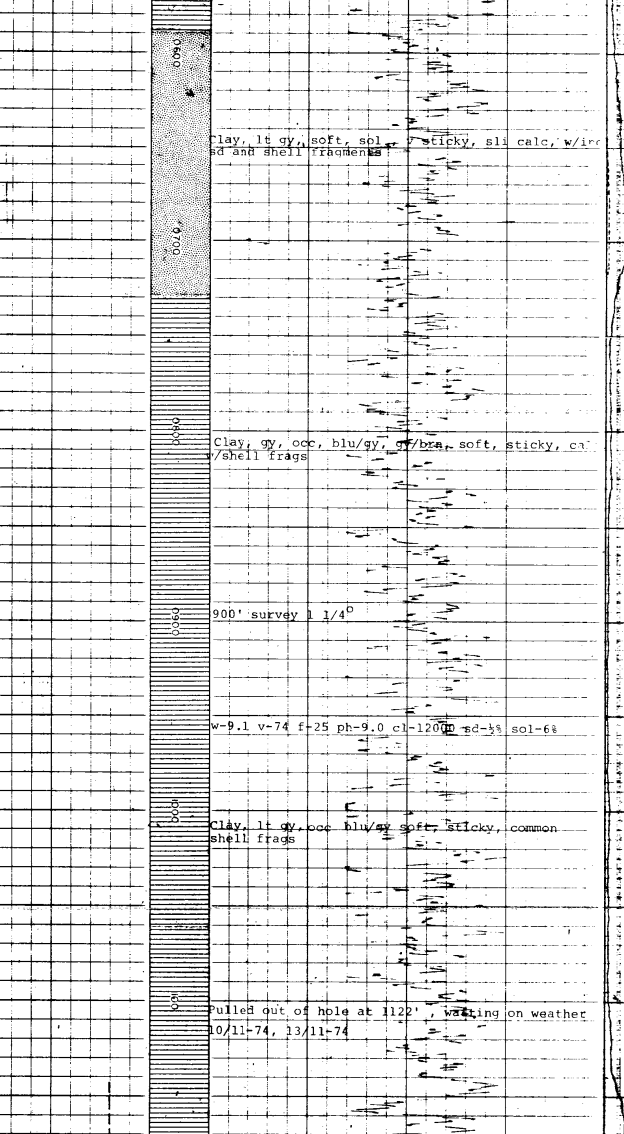


AMOCO NORWAY OIL CO.

FINAL WELL LOG

2/11-2

LOCATION: 56° 10' 34" N 02° 58' 26" E
AREA: OFFSHORE NORWEGIAN NORTH SEA
WATER DEPTH: 816
DATE MOORED: NOV. 6, 1974
DATE COMPLETED: DEC. 29, 1974
TOTAL DEPTH: 9207
PLUMBING TOTAL DEPTH: 1507
CASING: DEPT. 480, 20" x 12.75, 13790, 9780, 9780, 9780, 7 inner at 8900



CLASSIFICATION WHEN STARTED: WILDCAT
CLASSIFICATION WHEN COMPLETED: WILDCAT
METHOD OF COMPLETION: SAGD/SURF/2/11-2

SYMBOL	DESCRIPTION
[Symbol]	SHALE
[Symbol]	SAND
[Symbol]	CLAY
[Symbol]	SLT. SAND
[Symbol]	CLAY. SAND
[Symbol]	CLAY. SAND. SILT.
[Symbol]	CLAY. SAND. SILT. SAND
[Symbol]	CLAY. SAND. SILT. SAND. SILT.
[Symbol]	CLAY. SAND. SILT. SAND. SILT. SAND. SILT.
[Symbol]	CLAY. SAND. SILT. SAND. SILT. SAND. SILT. SAND. SILT.
[Symbol]	CLAY. SAND. SILT. SAND. SILT. SAND. SILT. SAND. SILT. SAND. SILT.

NEUTRON POROSITY INDEX %
CALIPER HOLE DIAMETER IN INCHES
GAMMA RAY ABSORPTION INDEX

NOTE: COLUMNAR LITHOLOGY & STRATIGRAPHY FROM 2730' WERE TAKEN FROM THE EXPLORATION LOG GAS POROSITY LOG AND ARE SHOWN IN PARENTHESES.

LOWER PLEISTOCENE 1228 (-1111)

TOP PLIOCENE 1762 (-1645)

TOP MIOCENE 2360 (-2243)

TOP OLILOCENE 4780 (-4663)

TOP EOCENE 5394 (-5277)

TOP PALEOCENE 7127 (-7010)

TOP PALEOCENE 'ASH' MARKER 8425' (-8308')

TOP LOWER CRETACEOUS 9030' (-8913')

T.D. (8207' - 9080') IN LOWER CRETACEOUS (ALBIAN)

DEPTH (FT)	INTERVAL TRANSIT TIME (MIN)
0 - 100	1.2
100 - 200	1.2
200 - 300	1.2
300 - 400	1.2
400 - 500	1.2
500 - 600	1.2
600 - 700	1.2
700 - 800	1.2
800 - 900	1.2
900 - 1000	1.2

DST RESULTS
DST No. 1 Perf. 8767' to 8797'. Intermittent - well produced 167 bbl oil, 100 bbl gas, 100 bbl water.
DST No. 2 Perf. 8425' to 8747'. Intermittent - well produced 1000 bbl oil, 500 bbl gas, 100 bbl water.
DST No. 3 Perf. 4930' to 4970'. Intermittent - well produced 100 bbl oil, 100 bbl gas, 100 bbl water.

CORE DESCRIPTION
Core 1: 8747' to 8797'. Intermittent - well produced 167 bbl oil, 100 bbl gas, 100 bbl water.
Core 2: 8425' to 8747'. Intermittent - well produced 1000 bbl oil, 500 bbl gas, 100 bbl water.
Core 3: 4930' to 4970'. Intermittent - well produced 100 bbl oil, 100 bbl gas, 100 bbl water.

