

COMPLETION LOG

AMOCO NORWAY OIL COMPANY
COMPOSITE WELL LOG: 2/11-3

AREA: OFFSHORE NORWAY SPUD DATE: OCT 10 1979 TOTAL DEPTH: 3051.7m
 LOCATION: 033 INITIAL STATUS: VALHALL DELINEATION K/S ELEVATION: 25.7m
 LOCATION: LAT 56°10'53.73"N COMPLETION DATE: DEC 3 1987 WELL DEPTH: 271.9 m
 LONG: 02°27'51.75"E FINAL STATUS: SUCCESSFUL DELINEATION WELL
 RIG: DEVI BETA AMOCO ENGINEERS E SKANDIEN, LARA, AMOCO GEOLOGIST: O ROMG, I MORRURY
 MUDLOG SERVICE: REC GAS G MOLLAND & VOLL 19/06/1978

OPERATIONAL SYMBOLS

SHOWS

CASING RECORD

LOCATION MAP

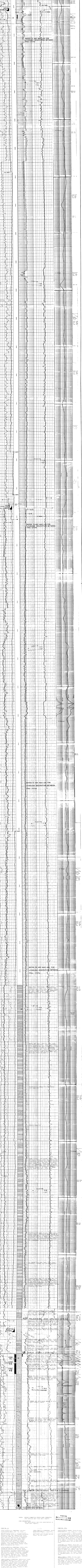
BIT SIZE DATA

LITHOLOGY, MINERALOGY & PALAEOZOOLOGY SYMBOLS

GAMMA RAY LOG

BORHOLE COMPENSATED SONIC LOG

ALUMINUM/IRON RATIO



TESTS: REPORT FLOWMETER TESTS WERE CONDUCTED FOR DETAILS SEE FLOW METER REPORT.

LOG DESCRIPTION: FOR MORE DETAILS SEE CORE DESCRIPTION IN FINAL WELL REPORT.

10 OCT 1979
 REC'D BY: RY
 QUALITY CONTROL