

COMPLETION LOG

PETRONORD 3/7 3 EAN

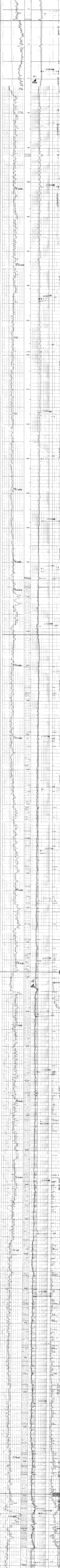
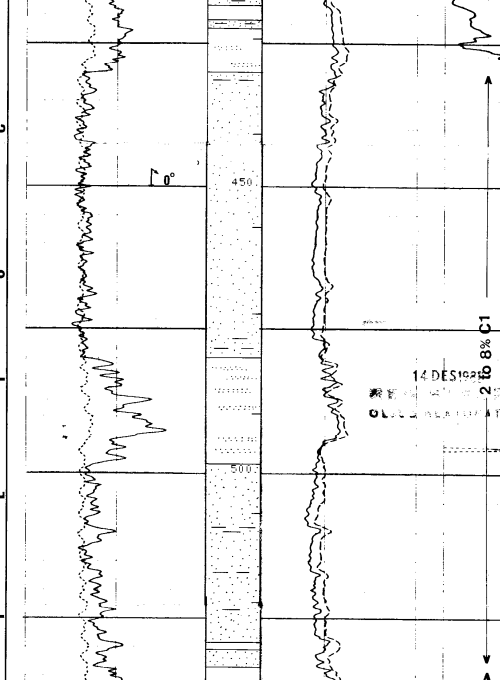
COMPOSITE LOG

NORWAY  
 off-shore

scale 1/500

Location: 6° 45' 32" E, 58° 24' 54" N  
 Date: 1981 June 8th  
 Depth: 37m, 25m, 3540m, 3542m  
 Drilling: Dytel Alpha  
 Services: Geoservices  
 Supervisor: G. Cullist, J. Marlon  
 Driller: F. Verrelles  
 Status: Plugged and Abandoned, dry hole

LEGEND



REL. & ABSOLUTE PRESSURE

| DEPTH (m) | RELATIVE PRESSURE (bar) | FORMATION PRESSURE (bar) | GRAVITY |
|-----------|-------------------------|--------------------------|---------|
| 3525.0    | 700.7                   | 672.0                    | 1.43    |
| 3520.0    | 700.0                   | 672.0                    | 1.43    |
| 3515.0    | 700.0                   | 672.0                    | 1.43    |
| 3510.0    | 700.0                   | 672.0                    | 1.43    |
| 3505.0    | 700.0                   | 672.0                    | 1.43    |
| 3500.0    | 700.0                   | 672.0                    | 1.43    |
| 3495.0    | 700.0                   | 672.0                    | 1.43    |
| 3490.0    | 700.0                   | 672.0                    | 1.43    |
| 3485.0    | 700.0                   | 672.0                    | 1.43    |
| 3480.0    | 700.0                   | 672.0                    | 1.43    |

Notes and observations regarding the log, including wellbore conditions and data accuracy.