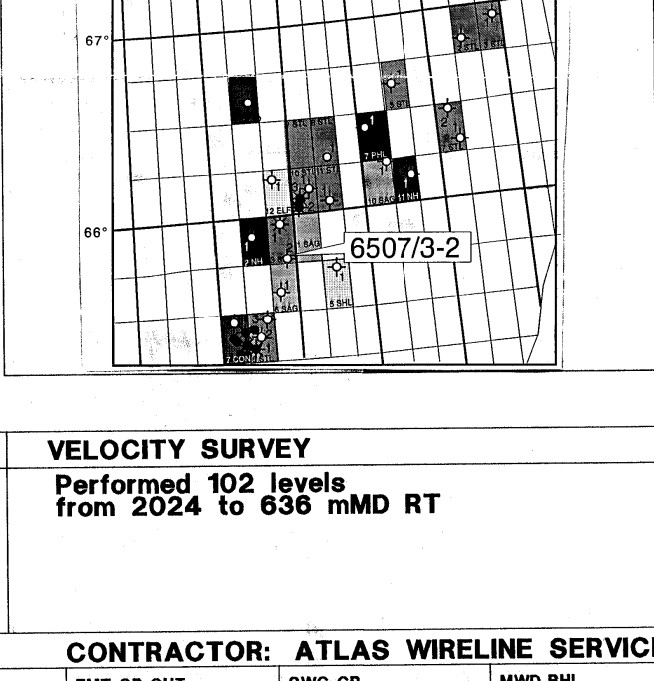


WELL COMPOSITE LOG 1 : 500

PROSPECT STRUCTURE

AREA: Nordland II
LICENCE: PL 159
COORDINATES: 65° 45' 25.29" N 07° 55' 18.79" E
K.B.: 23.5 m
WATER DEPTH: 409.5 m
TOTAL DEPTH: 2032 mMD RT / 2008.5 mTVD RT
FM. AT T.D.: Trilassic "Red Beds"
SPUD DATE: 6th April 1997
RIG RELEASE: 29th April 1997
WELL STATUS: Perm. plugged and abandoned
RIG: Transocean 8
CONTRACTOR: Transocean A/S
GEOLOGIST: Kristensen, Beyer, Phillips
PREPARED BY: D. Alm DATE: 20.10.97



CASING DATA: 30" 13 3/8" 493 mMD 994 mMD
LEAK OFF TESTS: 1.58 g/cc
VELOCITY SURVEY: Performed 102 levels from 2024 to 635 mMD RT

LOGS RUN: MLL-DLL-MAC-DCL-CHT IA: 2031 - 780
ZDL-CDL-DL-CHT IA: 2024 - 990
VSP-GR IA: 2024 - 635
HDP-GR-CHT IA: 2022 - 993
FMT-GR-CHT IA: 1978 - 1122
SWC-GR IA: 2018 - 1009
MWD-BH (0.5") RUN 1, 2, 3, 4, 5, 6, 7, 8, 9, 10, 11, 12, 13, 14, 15, 16, 17, 18, 19, 20, 21, 22, 23, 24, 25, 26, 27, 28, 29, 30, 31, 32, 33, 34, 35, 36, 37, 38, 39, 40, 41, 42, 43, 44, 45, 46, 47, 48, 49, 50, 51, 52, 53, 54, 55, 56, 57, 58, 59, 60, 61, 62, 63, 64, 65, 66, 67, 68, 69, 70, 71, 72, 73, 74, 75, 76, 77, 78, 79, 80, 81, 82, 83, 84, 85, 86, 87, 88, 89, 90, 91, 92, 93, 94, 95, 96, 97, 98, 99, 100, 101, 102

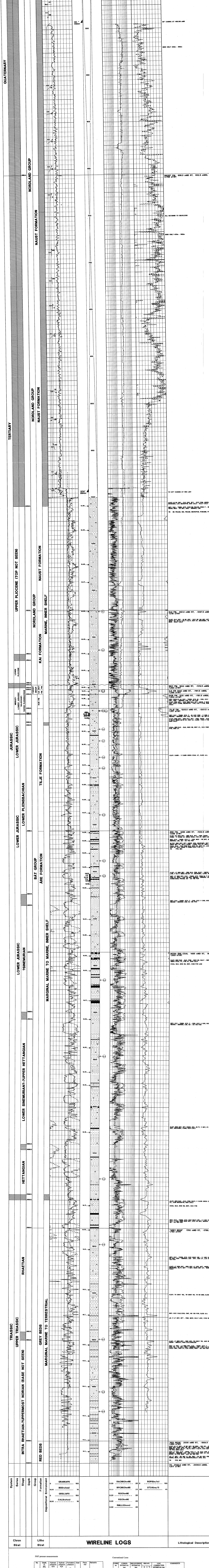
COMMENTS:

LITHOLOGICAL SYMBOLS

CONGLOMERATE, SANDSTONE, SALTSTONE, CLAY CLASTIC, SHALE, LIMESTONE, CHALK, DOLOMITE, MARL, TUFF, SALT GENL, ANHYDRITE, COAL LIGHTS, WOOD FRAGS, FOSSILS GENL, SHELL FRAGS, FORAMS, BURROWS, PYRITE, GLAUCONITE, MICA, KAOLINITE, CHERT, SPENITE

CUTTINGS/FLORESCENCE, OIL SHOW, OIL/GAS SHOW, GAS SHOW, AZIMUTH & INCLINATION, SIDEWALL CORES, CORES, DST, SFT/FMT, CASING SHOE / LINER, CHRONO STRAT UNCERTAINTY

WIRELINE LOGS



System Strat, Litho Strat, Lithological Descriptions

FMT processor measurements table with columns: No, Depth, Interval, Hydro, Hydro, Formation, Seal, Fm, Remarks

CONVENTIONAL CORES table with columns: CORE NO, CORES RECOVERED, RECV, LOC, COMMENTS