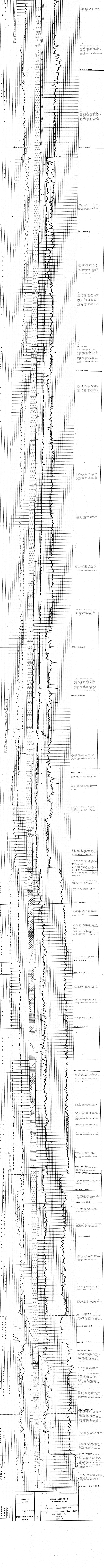


| | | | |
|--------------|------------------------------|---------------------|-----------------|
| LOCATION | 57°44' 00" N 02°00' 00" E | RIG VESSEL | NORJARK |
| ELEVATION | 24.35m | CONTRACTOR | NORVA (NORJARK) |
| SPUD DATE | 21st JUNE 1977 | WATER DEPTH | 63.60m |
| WELL STATUS | P. & A. Dry Hole | DRILLING COMPLETION | 20th JULY 1977 |
| DATE DRAFTED | 20th OCTOBER 1977 | TOTAL DEPTH | 2531.46m |
| PREPARED BY | A. ARMISTAD | RIG RELEASED | 25th JULY 1977 |

| | | | |
|--------------------|------------------|-------------------------------|-----------------|
| LITHOLOGIC SYMBOLS | | LOG RUNS | |
| CONGLOMERATE | CLAY & CLAYSTONE | GR | ISF-SONIC-GR |
| SANDSTONE | MARL | 1 85-433.84m | 1 402-1383.43m |
| SILTSTONE | LIMESTONE | 2 075-1503.84m | 2 80-130m |
| SHALE | GOLDFIERS | CALIPER LOG | FCG-CNE-GR |
| AMPHIBOLITE | GYPSEUM | 1 43-397m | 1 * 80-1384.43m |
| COAL | SALT | 2 075-2005.84m | 2 075-2005.84m |
| WELL DATA | | SONIC | |
| CASING BRIDGE | CEMENT PLUG | MICROSONIC PER FOOT = 3.65 μs | |
| WELL HEAD | GENERAL CORES | INTERVAL TRANSIT TIME (μs) | |
| WELL SHOES | | ITERATED TRAVEL TIME | |
| DRY INTERVAL | | MEAN SEA LEVEL | |



| | |
|----------------------------|-----------------------|
| SPONTANEOUS POTENTIAL | mv |
| GAMMA RAY | api units |
| INTERVAL TRANSIT TIME Δt | microseconds per foot |
| RESISTIVITY | ohm m |
| DEEP INDUCTION RESISTIVITY | ohm m |

SEA FLOOR 87.78m (-63.40m)

24.35m

2531.46m

2500m (-925.62m)

410m (-345.62m)

740m (-715.62m)

780m (-755.62m)

1240m (-1215.62m)

1320m (-1295.62m)

1400m (-1425.62m)

1600m (-1565.62m)

1760m (-1735.62m)

1870m (-1845.62m)

1940m (-1920.62m)

2103m (-2078.62m)

2142m (-2117.62m)

2163m (-2138.62m)

2220m (-2195.62m)

2351m (-2326.62m)

2370m (-2345.62m)

2397m (-2372.62m)

2410m (-2385.62m)

2488m (-2488.62m)

2562m (-2567.62m)

2637m (-2607.08m)