

CONOCO CONOCO Petroleum/Petroleum/Dominex Well 10/5-1. COMPOSITE WELL LOG. LOCATION: 57°34'51.9"N, 14°50'00.0"E. Area: NORTH SEA. Completion Status: P & A.

CONOCO GEOLOGISTS, SCHUMBERGER LOGS, CEMENT INTERVAL & PROPOSED, CONOCO ENGINEERS, MUDLOG SERVICE, DRILLING CONTRACTORS & RIG.

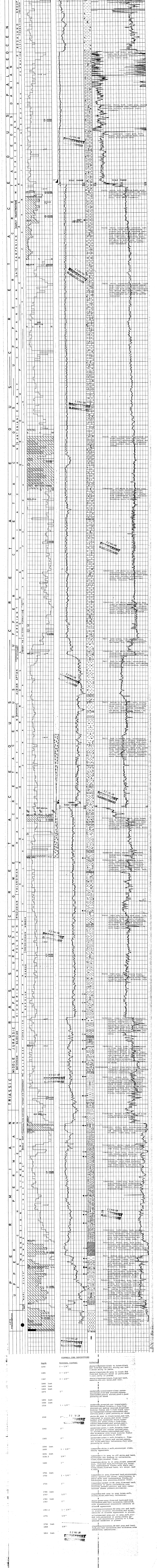
CASINGS, WELLSITE CORE DATA, CORE DATA CORRECTED TO GR LOG.

AUTHORS, APPROVED, REMARKS.

MAIN LITHOLOGICAL SYMBOLS, SECONDARY SYMBOLS, SYMBOLS FOR USE IN CARBONATE PROVINCES.

FOSSIL SYMBOLS, CASING & COMPLETION, LITHOLOGY.

STRATIGRAPHY, GAMMA RAY LOG, DEPTH SCALE.



RECOVERY (FOOTAGE) table with columns for Depth, Recovery (feet), and Lithology descriptions.