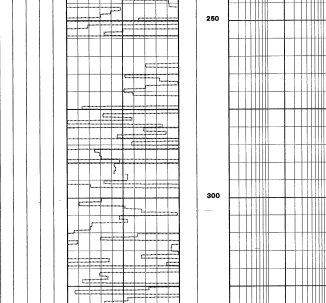


# Saga Petroleum Composite Well Log Well 15/12-1S

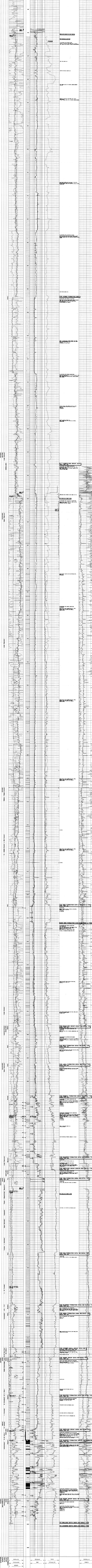
SCALE : 1500	LOCATION COORDINATES : UTM Zone 31 CM 03
COUNTRY : NORWAY	LATITUDE : 58° 12' 09.74" N
AREA : Block 15/12	LONGITUDE : 01° 05' 39.36" E
LICENSE : PL 038 (80%) / PL 116 (40%)	UTM COORDINATES : 6 452 1951 mE 424 2347 mE
PERMITS OVER BY THE LICENSE : 05.04.97, 18.30 HRS	ELEVATIONS : RKB - MEAN SEA LEVEL : 120m
DATE SPOGED : 10.04.97, 22.30 HRS	RKB - SEA FLOOR : 120m
T.D. DATE : 11.05.97, 15.00 HRS	WATER DEPTH : 337m
RIG RELEASED : 20.05.97, 15.35 HRS	TOTAL DEPTH : 337m
COMPLETION STATUS : Plugged and Abandoned	LOGS DEPTH : 337m
RIG : Deepsea Bergen	LOGS DEPTH : 337m

DRILLING CONTRACTOR : Geotek	MISCELLANEOUS SERVICE : MVO Baker Hughes Inteq	LOSS : White Schramberg
------------------------------	--	-------------------------

CASING ROPE (IN/KB)	HOLE SIZE INTERVAL (FOKSI)
9 5/8" 1000	9 5/8" 1000
8 1/2" 1000	8 1/2" 1000
8 1/2" 1000	8 1/2" 1000



DATE	TIME	DEPTH (m)	TEMPERATURE (°C)	RESISTIVITY (ohm-m)	SOUND VELOCITY (m/s)	GRAB SAMPLE
11.05.97	15.00	0	10	100	1500	
11.05.97	15.00	10	10	100	1500	
11.05.97	15.00	20	10	100	1500	
11.05.97	15.00	30	10	100	1500	
11.05.97	15.00	40	10	100	1500	
11.05.97	15.00	50	10	100	1500	
11.05.97	15.00	60	10	100	1500	
11.05.97	15.00	70	10	100	1500	
11.05.97	15.00	80	10	100	1500	
11.05.97	15.00	90	10	100	1500	
11.05.97	15.00	100	10	100	1500	
11.05.97	15.00	110	10	100	1500	
11.05.97	15.00	120	10	100	1500	
11.05.97	15.00	130	10	100	1500	
11.05.97	15.00	140	10	100	1500	
11.05.97	15.00	150	10	100	1500	
11.05.97	15.00	160	10	100	1500	
11.05.97	15.00	170	10	100	1500	
11.05.97	15.00	180	10	100	1500	
11.05.97	15.00	190	10	100	1500	
11.05.97	15.00	200	10	100	1500	
11.05.97	15.00	210	10	100	1500	
11.05.97	15.00	220	10	100	1500	
11.05.97	15.00	230	10	100	1500	
11.05.97	15.00	240	10	100	1500	
11.05.97	15.00	250	10	100	1500	
11.05.97	15.00	260	10	100	1500	
11.05.97	15.00	270	10	100	1500	
11.05.97	15.00	280	10	100	1500	
11.05.97	15.00	290	10	100	1500	
11.05.97	15.00	300	10	100	1500	
11.05.97	15.00	310	10	100	1500	
11.05.97	15.00	320	10	100	1500	
11.05.97	15.00	330	10	100	1500	
11.05.97	15.00	337	10	100	1500	



DEPTH (m)	GR/SP/CAL	RES	SONIC	DESCRIPTION	CNC/ZDEN
0	100	100	1500	SEA LEVEL	1.0
10	100	100	1500	SEA FLOOR	1.0
20	100	100	1500	SEA FLOOR	1.0
30	100	100	1500	SEA FLOOR	1.0
40	100	100	1500	SEA FLOOR	1.0
50	100	100	1500	SEA FLOOR	1.0
60	100	100	1500	SEA FLOOR	1.0
70	100	100	1500	SEA FLOOR	1.0
80	100	100	1500	SEA FLOOR	1.0
90	100	100	1500	SEA FLOOR	1.0
100	100	100	1500	SEA FLOOR	1.0
110	100	100	1500	SEA FLOOR	1.0
120	100	100	1500	SEA FLOOR	1.0
130	100	100	1500	SEA FLOOR	1.0
140	100	100	1500	SEA FLOOR	1.0
150	100	100	1500	SEA FLOOR	1.0
160	100	100	1500	SEA FLOOR	1.0
170	100	100	1500	SEA FLOOR	1.0
180	100	100	1500	SEA FLOOR	1.0
190	100	100	1500	SEA FLOOR	1.0
200	100	100	1500	SEA FLOOR	1.0
210	100	100	1500	SEA FLOOR	1.0
220	100	100	1500	SEA FLOOR	1.0
230	100	100	1500	SEA FLOOR	1.0
240	100	100	1500	SEA FLOOR	1.0
250	100	100	1500	SEA FLOOR	1.0
260	100	100	1500	SEA FLOOR	1.0
270	100	100	1500	SEA FLOOR	1.0
280	100	100	1500	SEA FLOOR	1.0
290	100	100	1500	SEA FLOOR	1.0
300	100	100	1500	SEA FLOOR	1.0
310	100	100	1500	SEA FLOOR	1.0
320	100	100	1500	SEA FLOOR	1.0
330	100	100	1500	SEA FLOOR	1.0
337	100	100	1500	SEA FLOOR	1.0

STRATIGRAPHY	GR/SP/CAL	RES	SONIC	DESCRIPTION	CNC/ZDEN
SYSTEM	GR/SP/CAL	RES	SONIC	DESCRIPTION	CNC/ZDEN
STAGE	GR/SP/CAL	RES	SONIC	DESCRIPTION	CNC/ZDEN
GROUP	GR/SP/CAL	RES	SONIC	DESCRIPTION	CNC/ZDEN
FORMATION	GR/SP/CAL	RES	SONIC	DESCRIPTION	CNC/ZDEN