

Year Licence: 1976
 Country: NORWAY
 Off-shore: 11/1-1
 Without laboratory results.

COMPOSITE - LOG

Coordinates: 06°44' 52.6"E, 57°16' 33.2"N
 Water Depth: ~73m
 E.L. at 10m KB: +25m

Spudded: 16.01.76
 Started: 17.01.76
 Abandoned: 28.02.76

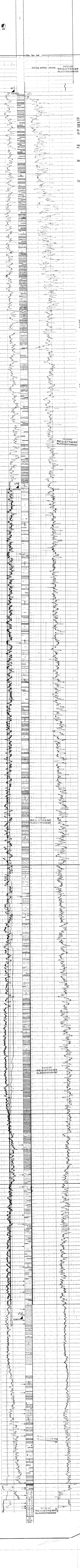
RIG: DEEP SEA DRILLER
 Contractor: D.S.D. COMPANY
 Mud-Logging: GEOSERVICES

Well-site Geologists: L. LETENDRE, M. VOSSOUGUI
 Approved by: Y. GALLY, date: 15.03.76
 Status: PLUGGED, ABANDONED
 AS A DRY HOLE

ORNAMENTS

Side wall core, Mechanical core, On cores and cuttings, Fluids column, F.I.T. RESULTS

Legend:
 Gas (star symbol)
 Oil (circle with dot)
 Form water or filtrate w/ salinity (circle with horizontal lines)
 Dry (circle with vertical lines)
 Mechanical failure (X)
 Fluids column: gas, oil, transition zone, water



REGISTRERT
 OJEDIREKTORATET
 28 FEB 1977