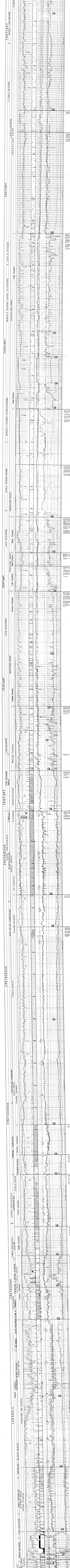
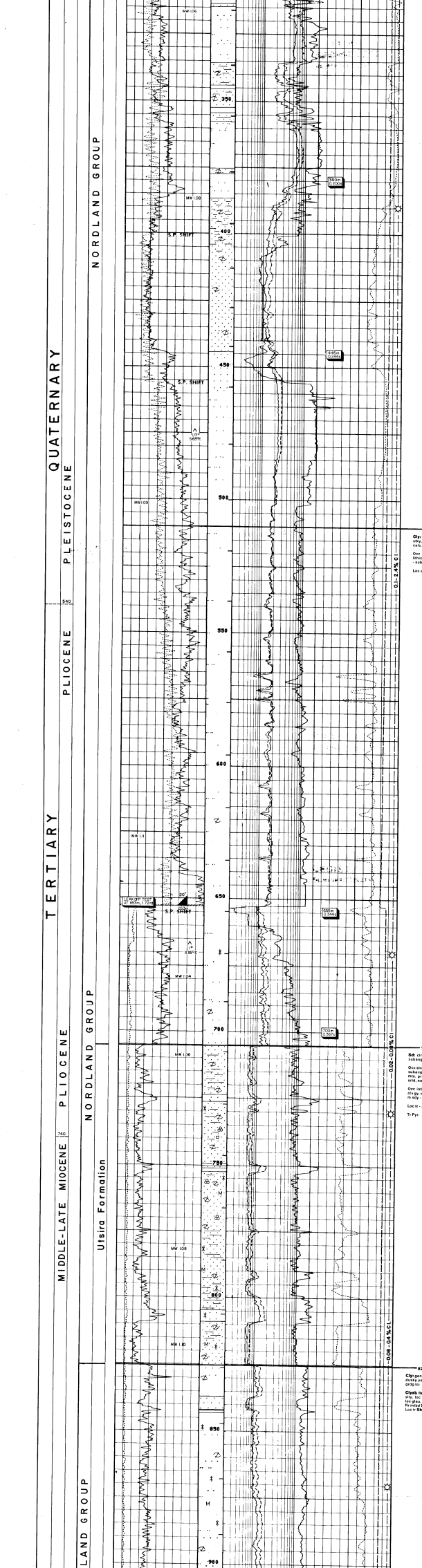


**Simon Petroleum Technology**  
 Date: November 19, 1982  
 Reached Total Depth: February 14, 1982  
 Completed Well Status: Project and Measurement  
 Country: Norway  
 Operator: Statoil  
 Logging Company: Geotek - Oslo  
 Prepared by: O. S. Nelson, M. S. Henderson, S. J. Peterson  
 Date: August 24, 1982

**Log Run**

Log Run	Depth (m)	Depth (ft)
1	0 - 100	0 - 328
2	100 - 200	328 - 656
3	200 - 300	656 - 984
4	300 - 400	984 - 1312
5	400 - 500	1312 - 1640
6	500 - 600	1640 - 1968
7	600 - 700	1968 - 2296
8	700 - 800	2296 - 2624
9	800 - 900	2624 - 2952
10	900 - 1000	2952 - 3280
11	1000 - 1100	3280 - 3608
12	1100 - 1200	3608 - 3936
13	1200 - 1300	3936 - 4264
14	1300 - 1400	4264 - 4592
15	1400 - 1500	4592 - 4920
16	1500 - 1600	4920 - 5248
17	1600 - 1700	5248 - 5576
18	1700 - 1800	5576 - 5904
19	1800 - 1900	5904 - 6232
20	1900 - 2000	6232 - 6560
21	2000 - 2100	6560 - 6888
22	2100 - 2200	6888 - 7216
23	2200 - 2300	7216 - 7544
24	2300 - 2400	7544 - 7872
25	2400 - 2500	7872 - 8200
26	2500 - 2600	8200 - 8528
27	2600 - 2700	8528 - 8856
28	2700 - 2800	8856 - 9184
29	2800 - 2900	9184 - 9512
30	2900 - 3000	9512 - 9840
31	3000 - 3100	9840 - 10168
32	3100 - 3200	10168 - 10496
33	3200 - 3300	10496 - 10824
34	3300 - 3400	10824 - 11152
35	3400 - 3500	11152 - 11480
36	3500 - 3600	11480 - 11808
37	3600 - 3700	11808 - 12136
38	3700 - 3800	12136 - 12464
39	3800 - 3900	12464 - 12792
40	3900 - 4000	12792 - 13120
41	4000 - 4100	13120 - 13448
42	4100 - 4200	13448 - 13776
43	4200 - 4300	13776 - 14104
44	4300 - 4400	14104 - 14432
45	4400 - 4500	14432 - 14760
46	4500 - 4600	14760 - 15088
47	4600 - 4700	15088 - 15416
48	4700 - 4800	15416 - 15744
49	4800 - 4900	15744 - 16072
50	4900 - 5000	16072 - 16400
51	5000 - 5100	16400 - 16728
52	5100 - 5200	16728 - 17056
53	5200 - 5300	17056 - 17384
54	5300 - 5400	17384 - 17712
55	5400 - 5500	17712 - 18040
56	5500 - 5600	18040 - 18368
57	5600 - 5700	18368 - 18696
58	5700 - 5800	18696 - 19024
59	5800 - 5900	19024 - 19352
60	5900 - 6000	19352 - 19680
61	6000 - 6100	19680 - 20008
62	6100 - 6200	20008 - 20336
63	6200 - 6300	20336 - 20664
64	6300 - 6400	20664 - 20992
65	6400 - 6500	20992 - 21320
66	6500 - 6600	21320 - 21648
67	6600 - 6700	21648 - 21976
68	6700 - 6800	21976 - 22304
69	6800 - 6900	22304 - 22632
70	6900 - 7000	22632 - 22960
71	7000 - 7100	22960 - 23288
72	7100 - 7200	23288 - 23616
73	7200 - 7300	23616 - 23944
74	7300 - 7400	23944 - 24272
75	7400 - 7500	24272 - 24600
76	7500 - 7600	24600 - 24928
77	7600 - 7700	24928 - 25256
78	7700 - 7800	25256 - 25584
79	7800 - 7900	25584 - 25912
80	7900 - 8000	25912 - 26240
81	8000 - 8100	26240 - 26568
82	8100 - 8200	26568 - 26896
83	8200 - 8300	26896 - 27224
84	8300 - 8400	27224 - 27552
85	8400 - 8500	27552 - 27880
86	8500 - 8600	27880 - 28208
87	8600 - 8700	28208 - 28536
88	8700 - 8800	28536 - 28864
89	8800 - 8900	28864 - 29192
90	8900 - 9000	29192 - 29520
91	9000 - 9100	29520 - 29848
92	9100 - 9200	29848 - 30176
93	9200 - 9300	30176 - 30504
94	9300 - 9400	30504 - 30832
95	9400 - 9500	30832 - 31160
96	9500 - 9600	31160 - 31488
97	9600 - 9700	31488 - 31816
98	9700 - 9800	31816 - 32144
99	9800 - 9900	32144 - 32472
100	9900 - 10000	32472 - 32800



**CORE REPORTS**

Core	Depth (m)	Depth (ft)	Comments
1	100 - 150	328 - 492	Tight formation
2	150 - 200	492 - 656	Tight formation
3	200 - 250	656 - 820	Tight formation
4	250 - 300	820 - 984	Tight formation
5	300 - 350	984 - 1148	Tight formation
6	350 - 400	1148 - 1312	Tight formation
7	400 - 450	1312 - 1476	Tight formation
8	450 - 500	1476 - 1640	Tight formation
9	500 - 550	1640 - 1804	Tight formation
10	550 - 600	1804 - 1968	Tight formation
11	600 - 650	1968 - 2132	Tight formation
12	650 - 700	2132 - 2296	Tight formation
13	700 - 750	2296 - 2460	Tight formation
14	750 - 800	2460 - 2624	Tight formation
15	800 - 850	2624 - 2788	Tight formation
16	850 - 900	2788 - 2952	Tight formation
17	900 - 950	2952 - 3116	Tight formation
18	950 - 1000	3116 - 3280	Tight formation

**RFT RESULTS**

Depth (m)	PHI	PHI A	PF	COMMENTS
1/1	456.5	1985	1992	
2/1	457.7	1204	1200	Tight formation
3/1	459	1201	1207	33
4/1	460.8	1216	1212	300
5/1	462.7	1230	1236	98
6/1	468	1219	1212	30
7/1	469	1230	1236	300
8/1	471.5	1230	1236	1214
9/1	474.7	1230	1236	
10/1	476.3	1237	1237	
11/1	476.3	1236	1236	