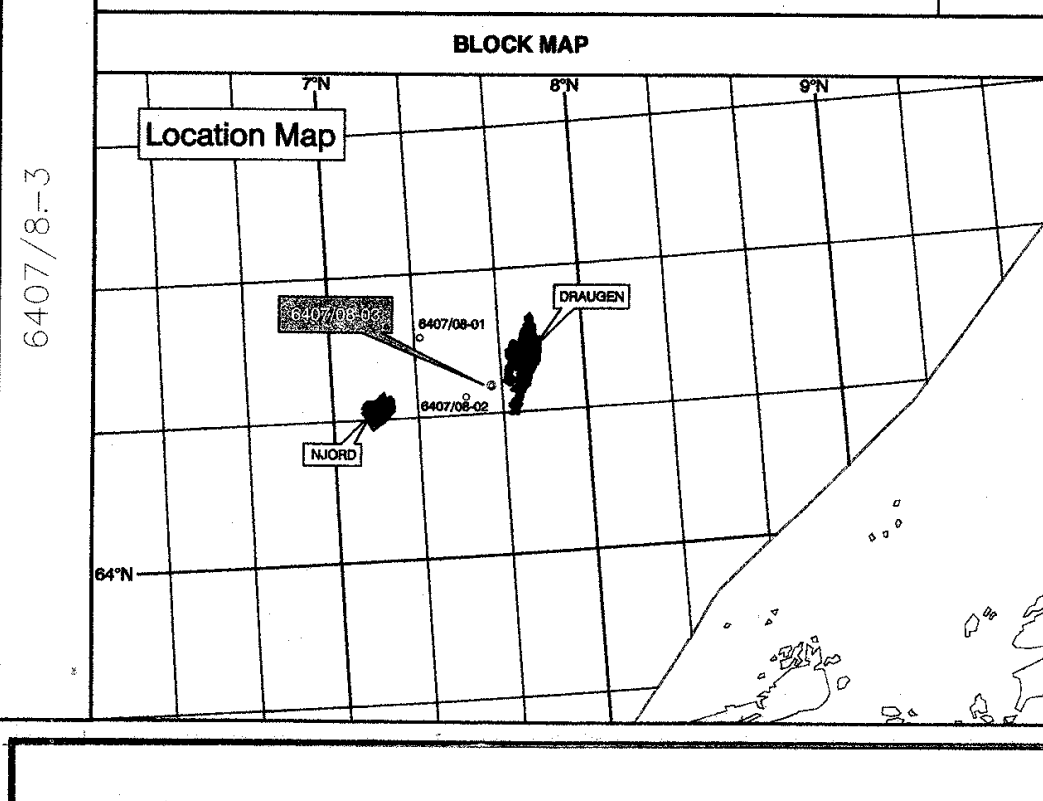


COMPOSITE LOG

6407/8-3

SCALE 1: 500



WELL LOCATION

CO-ORDINATES AT SURFACE
 Latitude: 27° 41' 00" E
 Longitude: 64° 18' 02.00" N
 Grid Reference: 432825.59
 1181999.31

VERTICAL WELL
 Projection: UTM
 Geoid: ED50

GENERAL WELL DATA

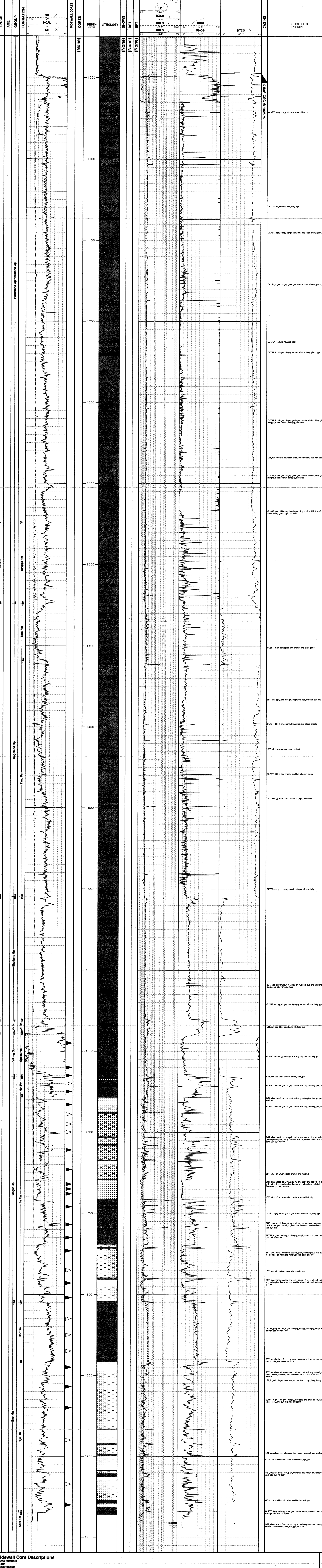
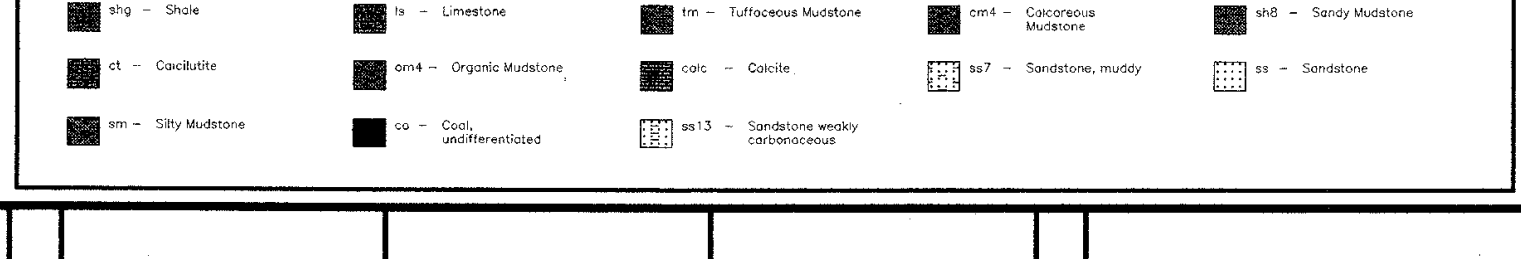
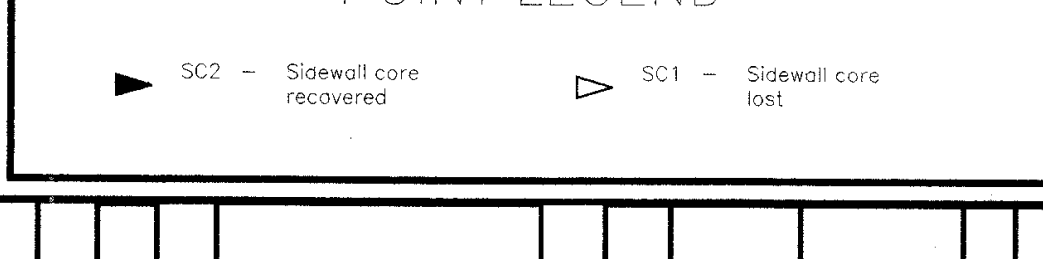
WELL CLASSIFICATION: Exploration
 COMPLETION WELL STATUS: Plugged and Abandoned
 OPERATOR: BP NORGE UA
 MAJOR CONTRACTOR: Maersk Contractors Norge AS
 INTERESTS: BP Norge Limited U.A. 40%

StatOil 50%
 Norske Shell 10%

LICENCE: PL 151
 LOCATION: Draugen West

DATE SHUDDERED: 13-MAY-1997
 DATE LOGGED: 25-MAY-1997
 REACHED TD: 21-MAY-1997
 RIG RELEASED: 28-MAY-1997

DEPTH DATUM: RKB-MSL = 222 metres
 WATER DEPTH: 207 m
 TOTAL DEPTH: 1860 metres MD BRT



Sidewall Core Descriptions

Shots taken: 30
 Recovered: 21
 Empty: 9

Shot No.	Depth MD BRT	Recovery mm	Lithology	Shows
1830	20	20	Sst: vl-f, gr, lt gy, pyr, n calc	None
1831	20	20	Empty	None
1832	30	30	Empty	None
1833	30	30	Sst: vl-f, wh, (clean), Slat	None
1834	30	30	Sst: vl-f, (dry), Sst: med gy	None
1835	30	30	Sst: vl-f, (dry), Sst: lt gy	None
1836	30	30	Lost	None
1837	30	30	Lost	None
1838	30	30	Lost	None
1839	30	30	Lost	None
1840	30	30	Lost	None
1841	30	30	Lost	None
1842	30	30	Sst: vl-f, med, use, res bit	None
1843	30	30	Sst: vl-f, clean, (dry), Sst: med gy	None
1844	30	30	Sst: vl-f, med, use, res bit	None
1845	30	30	Sst: vl-f, med, use, res bit	None
1846	30	30	Sst: vl-f, med, use, res bit	None
1847	30	30	Sst: vl-f, med, use, res bit	None
1848	30	30	Sst: vl-f, med, use, res bit	None
1849	30	30	Sst: vl-f, med, use, res bit	None
1850	30	30	Sst: vl-f, med, use, res bit	None
1851	30	30	Sst: vl-f, med, use, res bit	None
1852	30	30	Sst: vl-f, med, use, res bit	None
1853	30	30	Sst: vl-f, med, use, res bit	None
1854	30	30	Sst: vl-f, med, use, res bit	None
1855	30	30	Sst: vl-f, med, use, res bit	None
1856	30	30	Sst: vl-f, med, use, res bit	None
1857	30	30	Sst: vl-f, med, use, res bit	None
1858	30	30	Sst: vl-f, med, use, res bit	None
1859	30	30	Sst: vl-f, med, use, res bit	None
1860	30	30	Sst: vl-f, med, use, res bit	None
1861	30	30	Sst: vl-f, med, use, res bit	None
1862	30	30	Sst: vl-f, med, use, res bit	None
1863	30	30	Sst: vl-f, med, use, res bit	None
1864	30	30	Sst: vl-f, med, use, res bit	None
1865	30	30	Sst: vl-f, med, use, res bit	None
1866	30	30	Sst: vl-f, med, use, res bit	None
1867	30	30	Sst: vl-f, med, use, res bit	None
1868	30	30	Sst: vl-f, med, use, res bit	None
1869	30	30	Sst: vl-f, med, use, res bit	None
1870	30	30	Sst: vl-f, med, use, res bit	None
1871	30	30	Sst: vl-f, med, use, res bit	None
1872	30	30	Sst: vl-f, med, use, res bit	None
1873	30	30	Sst: vl-f, med, use, res bit	None
1874	30	30	Sst: vl-f, med, use, res bit	None
1875	30	30	Sst: vl-f, med, use, res bit	None
1876	30	30	Sst: vl-f, med, use, res bit	None
1877	30	30	Sst: vl-f, med, use, res bit	None
1878	30	30	Sst: vl-f, med, use, res bit	None
1879	30	30	Sst: vl-f, med, use, res bit	None
1880	30	30	Sst: vl-f, med, use, res bit	None
1881	30	30	Sst: vl-f, med, use, res bit	None
1882	30	30	Sst: vl-f, med, use, res bit	None
1883	30	30	Sst: vl-f, med, use, res bit	None
1884	30	30	Sst: vl-f, med, use, res bit	None
1885	30	30	Sst: vl-f, med, use, res bit	None
1886	30	30	Sst: vl-f, med, use, res bit	None
1887	30	30	Sst: vl-f, med, use, res bit	None
1888	30	30	Sst: vl-f, med, use, res bit	None
1889	30	30	Sst: vl-f, med, use, res bit	None
1890	30	30	Sst: vl-f, med, use, res bit	None
1891	30	30	Sst: vl-f, med, use, res bit	None
1892	30	30	Sst: vl-f, med, use, res bit	None
1893	30	30	Sst: vl-f, med, use, res bit	None
1894	30	30	Sst: vl-f, med, use, res bit	None
1895	30	30	Sst: vl-f, med, use, res bit	None
1896	30	30	Sst: vl-f, med, use, res bit	None
1897	30	30	Sst: vl-f, med, use, res bit	None
1898	30	30	Sst: vl-f, med, use, res bit	None
1899	30	30	Sst: vl-f, med, use, res bit	None
1900	30	30	Sst: vl-f, med, use, res bit	None
1901	30	30	Sst: vl-f, med, use, res bit	None
1902	30	30	Sst: vl-f, med, use, res bit	None
1903	30	30	Sst: vl-f, med, use, res bit	None
1904	30	30	Sst: vl-f, med, use, res bit	None
1905	30	30	Sst: vl-f, med, use, res bit	None
1906	30	30	Sst: vl-f, med, use, res bit	None
1907	30	30	Sst: vl-f, med, use, res bit	None
1908	30	30	Sst: vl-f, med, use, res bit	None
1909	30	30	Sst: vl-f, med, use, res bit	None
1910	30	30	Sst: vl-f, med, use, res bit	None
1911	30	30	Sst: vl-f, med, use, res bit	None
1912	30	30	Sst: vl-f, med, use, res bit	None
1913	30	30	Sst: vl-f, med, use, res bit	None
1914	30	30	Sst: vl-f, med, use, res bit	None
1915	30	30	Sst: vl-f, med, use, res bit	None
1916	30	30	Sst: vl-f, med, use, res bit	None
1917	30	30	Sst: vl-f, med, use, res bit	None
1918	30	30	Sst: vl-f, med, use, res bit	None
1919	30	30	Sst: vl-f, med, use, res bit	None
1920	30	30	Sst: vl-f, med, use, res bit	None
1921	30	30	Sst: vl-f, med, use, res bit	None
1922	30	30	Sst: vl-f, med, use, res bit	None
1923	30	30	Sst: vl-f, med, use, res bit	None
1924	30	30	Sst: vl-f, med, use, res bit	None
1925	30	30	Sst: vl-f, med, use, res bit	None
1926	30	30	Sst: vl-f, med, use, res bit	None
1927	30	30	Sst: vl-f, med, use, res bit	None
1928	30	30	Sst: vl-f, med, use, res bit	None
1929	30	30	Sst: vl-f, med, use, res bit	None
1930	30	30	Sst: vl-f, med, use, res bit	None
1931	30	30	Sst: vl-f, med, use, res bit	None
1932	30	30	Sst: vl-f, med, use, res bit	None
1933	30	30	Sst: vl-f, med, use, res bit	None
1934	30	30	Sst: vl-f, med, use, res bit	None
1935	30	30	Sst: vl-f, med, use, res bit	None
1936	30	30	Sst: vl-f, med, use, res bit	None
1937	30	30	Sst: vl-f, med, use, res bit	None
1938	30	30	Sst: vl-f, med, use, res bit	None
1939	30	30	Sst: vl-f, med, use, res bit	None
1940	30	30	Sst: vl-f, med, use, res bit	None
1941	30	30	Sst: vl-f, med, use, res bit	None
1942	30	30	Sst: vl-f, med, use, res bit	None
1943	30	30	Sst: vl-f, med, use, res bit	None
1944	30	30	Sst: vl-f, med, use, res bit	None
1945	30	30	Sst: vl-f, med, use, res bit	None

6407/8-3