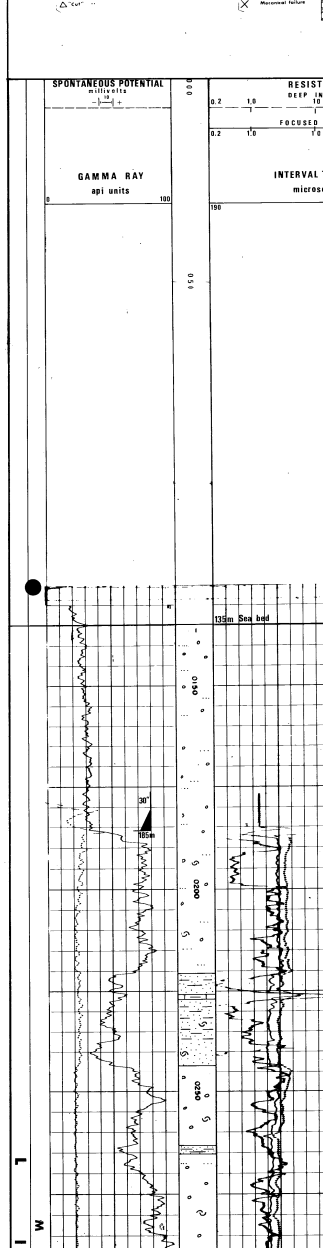
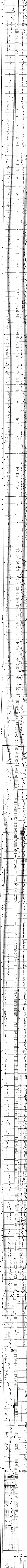
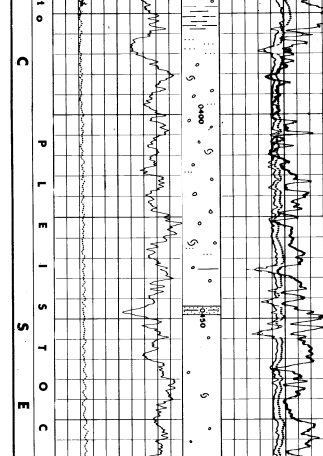


PETROBRAS 15/3-2 ELF MORBE a.s.
COMPOSITE LOG
 AREA: NORWAY off-shore
 scale 1/500



LEGEND



Testing RET Results

Zone	Depth (m)	Pressure (bar)	Temperature (°C)	Flow Rate (m³/d)	Permeability (D)	Porosity (%)	Formation Volume Factor (FVF)	Compressibility (C)	Viscosity (cP)	Surface Tension (dyne/cm)	Wettability	Capillary Pressure (bar)
Zone I	1000	100	30	100	10	20	1.0	0.001	100	30	W	0.5
	1100	100	30	100	10	20	1.0	0.001	100	30	W	0.5
	1200	100	30	100	10	20	1.0	0.001	100	30	W	0.5
	1300	100	30	100	10	20	1.0	0.001	100	30	W	0.5
	1400	100	30	100	10	20	1.0	0.001	100	30	W	0.5
Zone II	1500	100	30	100	10	20	1.0	0.001	100	30	W	0.5
	1600	100	30	100	10	20	1.0	0.001	100	30	W	0.5
	1700	100	30	100	10	20	1.0	0.001	100	30	W	0.5
	1800	100	30	100	10	20	1.0	0.001	100	30	W	0.5
	1900	100	30	100	10	20	1.0	0.001	100	30	W	0.5
Zone III	2000	100	30	100	10	20	1.0	0.001	100	30	W	0.5
	2100	100	30	100	10	20	1.0	0.001	100	30	W	0.5
	2200	100	30	100	10	20	1.0	0.001	100	30	W	0.5
	2300	100	30	100	10	20	1.0	0.001	100	30	W	0.5
	2400	100	30	100	10	20	1.0	0.001	100	30	W	0.5