

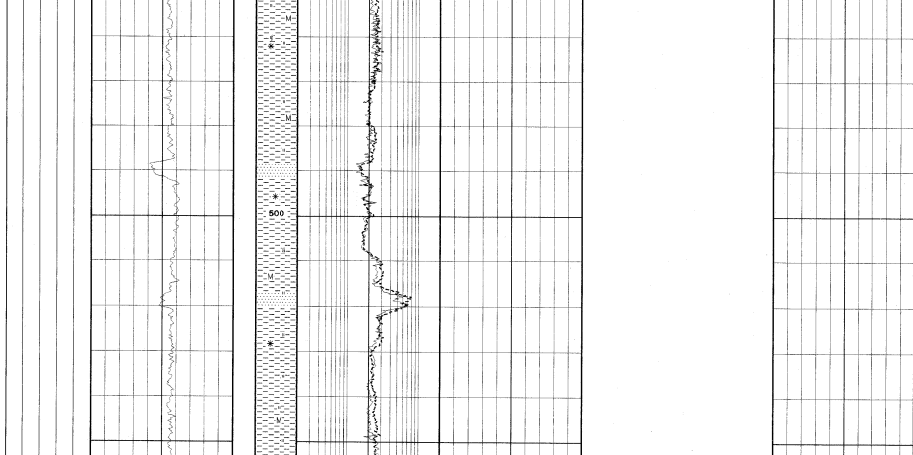
# Saga Petroleum ASA

## Composite Well Log

### Well 34/7-26S & SR

SCALE : 1500 LOCATION COORDINATES : UTM ZONE 31  
 COUNTRY : NORWAY LATITUDE : 61 16 29.38 N  
 ARI : 8000.00/7 LONGITUDE : 2 7 14.1 E  
 LICENCE : PLO89 UTM COORDINATES : 6792079.59N 452806.91E  
 BY TAKEN OVER : 18.08.97 ELEVATIONS :  
 DATE SPUDED : 19.08.97 RKB-MEAN SEA LEVEL : 25m  
 T.O. DATE : 19.02.98 RKB-SEA FLOOR : 226m  
 RIG RELEASED : 09.02.98 WATER DEPTH : 203m  
 COMPLETION STATUS : Plugged and sidetracked TOTAL DEPTH : 4690m RKB (2657.6m) TVD RKB :  
 DRILLING CONTRACTOR : Scarabeo 5 loggers depth :  
 MUDLOGGING SERVICE : Geoservice LOGS

CAVING (RIGG) (Meters)	WELL SIZE (INTERVAL (Meters))
30	9 7/8"
13	9 7/8"
8	9 7/8"
218	9 7/8"
246	9 7/8"
270	9 7/8"
276	9 7/8"
280	9 7/8"
282	9 7/8"
284	9 7/8"
286	9 7/8"
288	9 7/8"
290	9 7/8"
292	9 7/8"
294	9 7/8"
296	9 7/8"
298	9 7/8"
300	9 7/8"
302	9 7/8"
304	9 7/8"
306	9 7/8"
308	9 7/8"
310	9 7/8"
312	9 7/8"
314	9 7/8"
316	9 7/8"
318	9 7/8"
320	9 7/8"
322	9 7/8"
324	9 7/8"
326	9 7/8"
328	9 7/8"
330	9 7/8"
332	9 7/8"
334	9 7/8"
336	9 7/8"
338	9 7/8"
340	9 7/8"
342	9 7/8"
344	9 7/8"
346	9 7/8"
348	9 7/8"
350	9 7/8"
352	9 7/8"
354	9 7/8"
356	9 7/8"
358	9 7/8"
360	9 7/8"
362	9 7/8"
364	9 7/8"
366	9 7/8"
368	9 7/8"
370	9 7/8"
372	9 7/8"
374	9 7/8"
376	9 7/8"
378	9 7/8"
380	9 7/8"
382	9 7/8"
384	9 7/8"
386	9 7/8"
388	9 7/8"
390	9 7/8"
392	9 7/8"
394	9 7/8"
396	9 7/8"
398	9 7/8"
400	9 7/8"
402	9 7/8"
404	9 7/8"
406	9 7/8"
408	9 7/8"
410	9 7/8"
412	9 7/8"
414	9 7/8"
416	9 7/8"
418	9 7/8"
420	9 7/8"
422	9 7/8"
424	9 7/8"
426	9 7/8"
428	9 7/8"
430	9 7/8"
432	9 7/8"
434	9 7/8"
436	9 7/8"
438	9 7/8"
440	9 7/8"
442	9 7/8"
444	9 7/8"
446	9 7/8"
448	9 7/8"
450	9 7/8"
452	9 7/8"
454	9 7/8"
456	9 7/8"
458	9 7/8"
460	9 7/8"
462	9 7/8"
464	9 7/8"
466	9 7/8"
468	9 7/8"
470	9 7/8"
472	9 7/8"
474	9 7/8"
476	9 7/8"
478	9 7/8"
480	9 7/8"
482	9 7/8"
484	9 7/8"
486	9 7/8"
488	9 7/8"
490	9 7/8"
492	9 7/8"
494	9 7/8"
496	9 7/8"
498	9 7/8"
500	9 7/8"



AUTHOR : E Skutten DRAFTED BY : E Skutten APPR : A Hansen DATE : 01/19/98

