

Norsk Hydro

Well: 15/5-2

Date Spudded: August 16, 1978

Reached Total Depth: November 16, 1978

Completion Date: December 16, 1978

Well Status: Temporary abandoned with production

Rig: Platform Svalbard

Country: Norway

County: Oslo

District: Østfold

Field: Statfjord

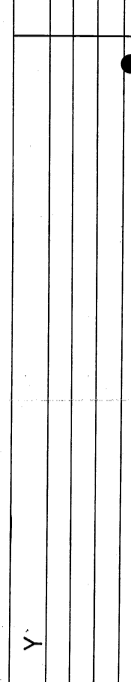
Operator: Norsk Hydro

Loggers: A. Davies, B. Ferguson, C. L. L. L.

Date: June 16, 1979

Completion log

Well: 15/5-2

Location map: 

Coordinates: 58° 16' 30" N, 15° 07' 30" E

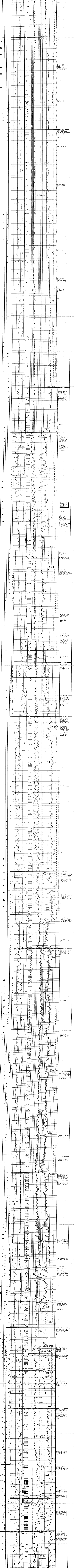
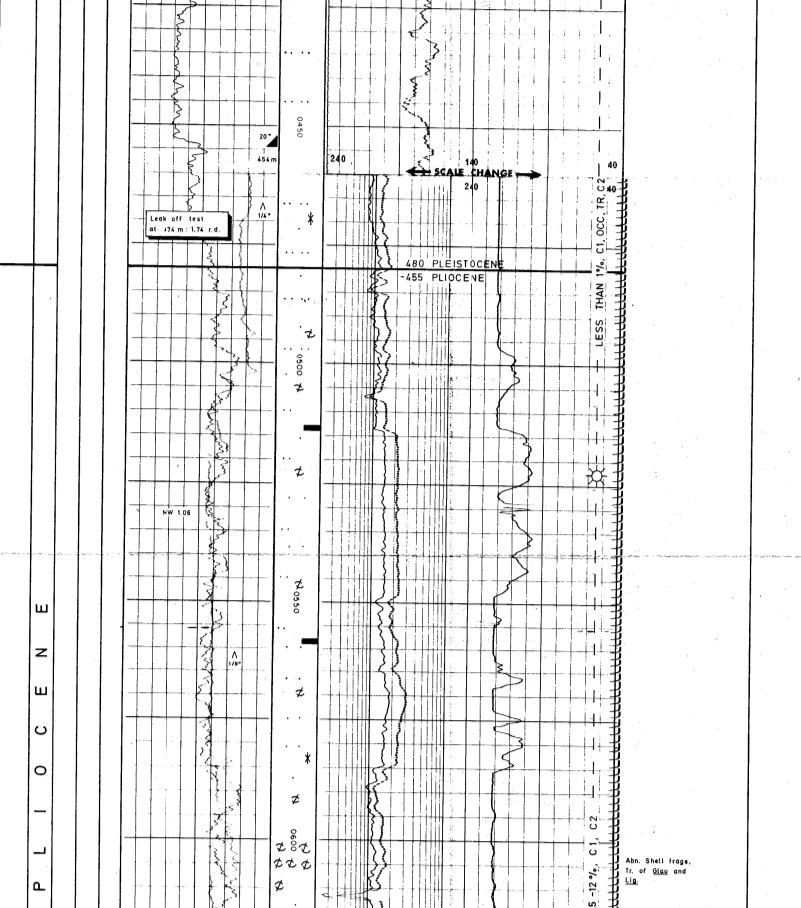
Elevation: 131.2 m

Water Depth: 131.2 m

Total Depth (Depth): 4323 m

Formation at Total Depth: 15/5-2 (15/5-2)

LOGS	LOGS	LOGS	LOGS	LOGS
SPDCOR	LOGS	LOGS	LOGS	LOGS
1. 15/5-2 (15/5-2)	1. 15/5-2 (15/5-2)	1. 15/5-2 (15/5-2)	1. 15/5-2 (15/5-2)	1. 15/5-2 (15/5-2)
2. 15/5-2 (15/5-2)	2. 15/5-2 (15/5-2)	2. 15/5-2 (15/5-2)	2. 15/5-2 (15/5-2)	2. 15/5-2 (15/5-2)
3. 15/5-2 (15/5-2)	3. 15/5-2 (15/5-2)	3. 15/5-2 (15/5-2)	3. 15/5-2 (15/5-2)	3. 15/5-2 (15/5-2)
4. 15/5-2 (15/5-2)	4. 15/5-2 (15/5-2)	4. 15/5-2 (15/5-2)	4. 15/5-2 (15/5-2)	4. 15/5-2 (15/5-2)
5. 15/5-2 (15/5-2)	5. 15/5-2 (15/5-2)	5. 15/5-2 (15/5-2)	5. 15/5-2 (15/5-2)	5. 15/5-2 (15/5-2)



CORE DESCRIPTIONS

Core No.	Depth (m)	Description
1	0 - 10	Shale, grey, silty
2	10 - 20	Sandstone, medium, grey
3	20 - 30	Shale, grey, silty
4	30 - 40	Sandstone, medium, grey
5	40 - 50	Shale, grey, silty
6	50 - 60	Sandstone, medium, grey
7	60 - 70	Shale, grey, silty
8	70 - 80	Sandstone, medium, grey
9	80 - 90	Shale, grey, silty
10	90 - 100	Sandstone, medium, grey
11	100 - 110	Shale, grey, silty
12	110 - 120	Sandstone, medium, grey
13	120 - 130	Shale, grey, silty
14	130 - 140	Sandstone, medium, grey
15	140 - 150	Shale, grey, silty
16	150 - 160	Sandstone, medium, grey
17	160 - 170	Shale, grey, silty
18	170 - 180	Sandstone, medium, grey
19	180 - 190	Shale, grey, silty
20	190 - 200	Sandstone, medium, grey
21	200 - 210	Shale, grey, silty
22	210 - 220	Sandstone, medium, grey
23	220 - 230	Shale, grey, silty
24	230 - 240	Sandstone, medium, grey
25	240 - 250	Shale, grey, silty
26	250 - 260	Sandstone, medium, grey
27	260 - 270	Shale, grey, silty
28	270 - 280	Sandstone, medium, grey
29	280 - 290	Shale, grey, silty
30	290 - 300	Sandstone, medium, grey
31	300 - 310	Shale, grey, silty
32	310 - 320	Sandstone, medium, grey
33	320 - 330	Shale, grey, silty
34	330 - 340	Sandstone, medium, grey
35	340 - 350	Shale, grey, silty
36	350 - 360	Sandstone, medium, grey
37	360 - 370	Shale, grey, silty
38	370 - 380	Sandstone, medium, grey
39	380 - 390	Shale, grey, silty
40	390 - 400	Sandstone, medium, grey
41	400 - 410	Shale, grey, silty
42	410 - 420	Sandstone, medium, grey
43	420 - 430	Shale, grey, silty
44	430 - 440	Sandstone, medium, grey
45	440 - 450	Shale, grey, silty
46	450 - 460	Sandstone, medium, grey
47	460 - 470	Shale, grey, silty
48	470 - 480	Sandstone, medium, grey
49	480 - 490	Shale, grey, silty
50	490 - 500	Sandstone, medium, grey
51	500 - 510	Shale, grey, silty
52	510 - 520	Sandstone, medium, grey
53	520 - 530	Shale, grey, silty
54	530 - 540	Sandstone, medium, grey
55	540 - 550	Shale, grey, silty
56	550 - 560	Sandstone, medium, grey
57	560 - 570	Shale, grey, silty
58	570 - 580	Sandstone, medium, grey
59	580 - 590	Shale, grey, silty
60	590 - 600	Sandstone, medium, grey
61	600 - 610	Shale, grey, silty
62	610 - 620	Sandstone, medium, grey
63	620 - 630	Shale, grey, silty
64	630 - 640	Sandstone, medium, grey
65	640 - 650	Shale, grey, silty
66	650 - 660	Sandstone, medium, grey
67	660 - 670	Shale, grey, silty
68	670 - 680	Sandstone, medium, grey
69	680 - 690	Shale, grey, silty
70	690 - 700	Sandstone, medium, grey
71	700 - 710	Shale, grey, silty
72	710 - 720	Sandstone, medium, grey
73	720 - 730	Shale, grey, silty
74	730 - 740	Sandstone, medium, grey
75	740 - 750	Shale, grey, silty
76	750 - 760	Sandstone, medium, grey
77	760 - 770	Shale, grey, silty
78	770 - 780	Sandstone, medium, grey
79	780 - 790	Shale, grey, silty
80	790 - 800	Sandstone, medium, grey
81	800 - 810	Shale, grey, silty
82	810 - 820	Sandstone, medium, grey
83	820 - 830	Shale, grey, silty
84	830 - 840	Sandstone, medium, grey
85	840 - 850	Shale, grey, silty
86	850 - 860	Sandstone, medium, grey
87	860 - 870	Shale, grey, silty
88	870 - 880	Sandstone, medium, grey
89	880 - 890	Shale, grey, silty
90	890 - 900	Sandstone, medium, grey
91	900 - 910	Shale, grey, silty
92	910 - 920	Sandstone, medium, grey
93	920 - 930	Shale, grey, silty
94	930 - 940	Sandstone, medium, grey
95	940 - 950	Shale, grey, silty
96	950 - 960	Sandstone, medium, grey
97	960 - 970	Shale, grey, silty
98	970 - 980	Sandstone, medium, grey
99	980 - 990	Shale, grey, silty
100	990 - 1000	Sandstone, medium, grey