

6507/11-55 Midgard PROSPECT STRUCTURE COMPOSITE LOG 1: 500

AREA: Hallenbanken
AGARD UNIT
COORDINATES: 65° 00' 18.57" N 07° 33' 25.23" E
K.B.: 25m
WATER DEPTH: 256m
TOTAL DEPTH: 2695 mMD/2599.5 mTVD RT
FM AT T.D.: Ror Formation
SPUD DATE: 05.09.97
RIG RELEASE: 28.10.97
WELL STATUS: Temporarily plugged and abandoned
RIG: Deepsea Trym
CONTRACTOR: Odjell
GEOLOGIST: Phillip, Langset, Johnsen, Beyer, Borthen, Krlstenen
PREPARED BY: Hodven/Johnsen DATE: 05.05.98

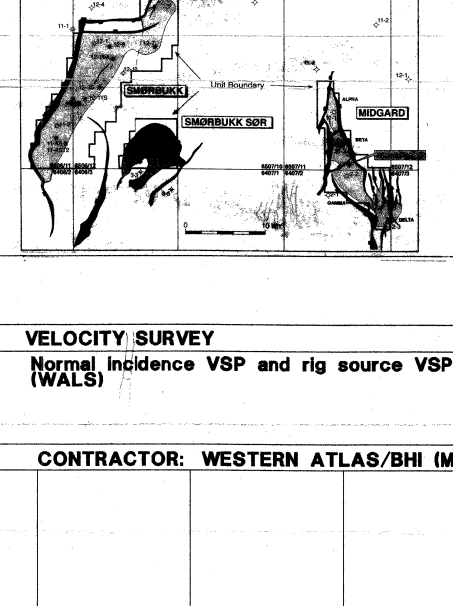


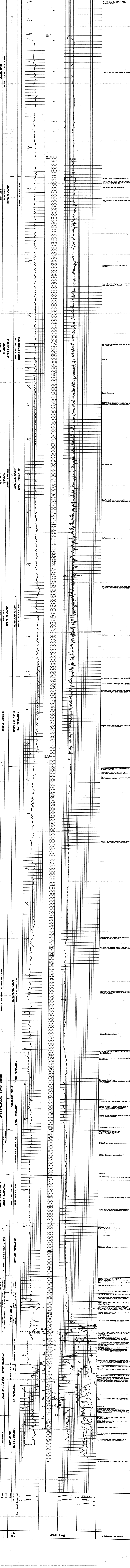
Table with columns: CASING DATA, LEAK OFF TESTS, VELOCITY SURVEY. Includes data for casing types, leak off test results, and VSP data.

Table with columns: LOGS RUN, CONTRACTOR. Lists well logs and core logs with depths and contractor information.

COMMENTS:
1. Drilled 3 1/2" pilot hole to 582m. Stopped and plugged back due to shallow gas at 577m. Ran 20" casing above shallow gas zone.
2. The well was drilled deviated. The well path is to an angle of 19.5 deg in the interval 700m to 1350m. This angle was kept down to TD.

LITHOLOGICAL SYMBOLS table listing various rock types and their corresponding symbols for identification in the log.

Table with columns: Chron Strat, Litho Strat, Well Log, Lithological Descriptions. Contains the main data for the well log.



Summary table at the bottom of the log with columns: Chron Strat, Litho Strat, Well Log, Lithological Descriptions.