

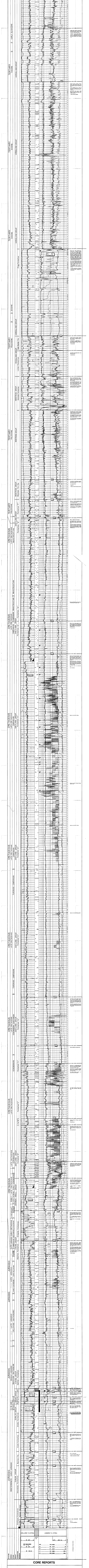
Norsk Hydro FORTROLIG Completion log
Well: 29-9-1
Scale: 1:500

Geographic information including location map, coordinates (Norway), and well details (Well No., Date, etc.).

Log Run table with columns for Depth (m), Log Run, and other parameters.

Legend for well log symbols and abbreviations.

Geological and geophysical data including SPONTANEOUS POTENTIAL, RESISTIVITY, and GAMMA RAY.



CORE REPORTS section with multiple columns detailing core data.

DST RESULT WELL 29-9-1 section showing perforated interval and pressure data.