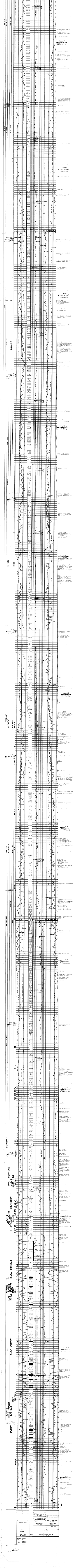


COORDINATES: 56°21'49.0"N 01°34'22.31"E LOCATION MAP WATER DEPTH: 125m TOTAL DEPTH: 1500m

RIG: Røttøy PREPARED BY: Jon Østrem DATE: 1/7 - 82 CONTRACTOR: Glomar Morin

CASING DATA: 6 1/2" REGULAR GRADE OFF TEST DATE: 1/7 - 82 VELOCITY SURVEY: 26 checks, Interval 525-3980m

- LITHOLOGIC SYMBOLS: SAND, SANDSTONE, SILT, CLAY, SHALE, LIMESTONE, MARL, etc.



Summary block with sections: RESISTIVITY, CONDUCTIVITY, SPECIFIC ACOUSTIC TIME. Includes a table with columns for SP, QW, and DEPTH. The table contains data points from the well log.