

# sperry-sun international, inc.

## Pressure Survey Report For

ESSO EXPLORATION NORWAY  
WELL NO: 15/8 - 1  
DATE : 14 DECEMBER 1981  
TEST NO: 2, RUN NO: 1



(A Sperry-Sun Company)

**Precision Instruments / Professional Service**

15/8 - 1  
14 DEC 1981



**PRESSURE TEST DATA SUMMARY**

COMPANY: ESSO EXPLORATION NORWAY DATE: 14 DECEMBER 1981

FIELD: SLEIPNER WELL NO: 15/8-1 JOB NO: MRPG-1072-AB

TEST TYPE: DRILL STEM TEST NO: 2 RUN NO: 1 MAX B.H.T. 270 °F

PERFORATION INTERVAL: 3911 - 3926 METRES ZONE: \_\_\_\_\_

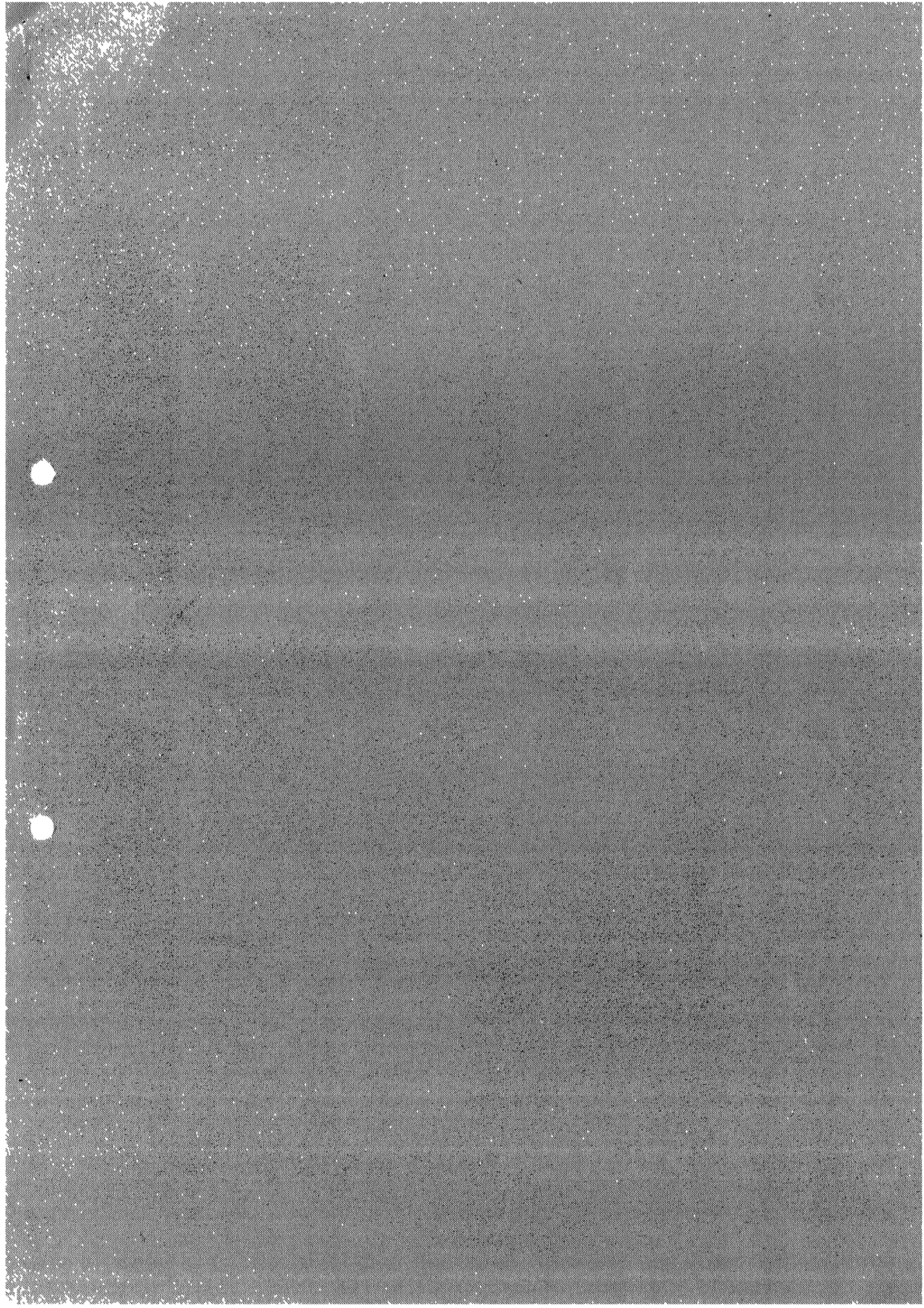
	TOP	MIDDLE	BOTTOM
GAUGE TYPE/NO.	<u>4</u>	_____	<u>0017</u>
PRESSURE SENSING DEPTH	<u>3899.74 M</u>	_____	<u>3902.71 M</u>
ELEMENT SIZE	<u>12000 PSI</u>	_____	<u>12000 PSI</u>
TIME MODE	<u>4 MIN.</u>	_____	<u>4 MIN.</u>
BATTERY TYPE	<u>SILVER OXIDE</u>	_____	<u>SILVER OXIDE</u>

EVENT	SURFACE TIMES & DATES		TEMP.	°F
PACKER SET	07:16	16/12-81	259	
OPEN APR-N TOOL	10:52	"	257	
WELL OPENED ON 20/64" ADJ.CHOKE	10:55	"	257	
CLOSE CHOKE MANIFOLD	11:00	"	257	
CLOSE APR-N TOOL	11:01	"	257	
OPEN APR-N TOOL	12:25	"	259	
WELL OPENED ON 20/64" ADJ.CHOKE	12:27	"	259	
CHANGE TO 30/64" ADJ.CHOKE	12:36	"	259	
GAS TO SURFACE	13:02	"	264	
CHANGE TO 40/64" ADJ.CHOKE	13:10	"	265	
CHANGE TO 32/64" ADJ.CHOKE	13:11	"	265	
CHANGE TO 32/64" FIXED CHOKE	13:18	"	265	
FLOWING TO SEPARATOR	16:00	"	268	
CHANGE TO 42/64" FIXED CHOKE	19:46	"	268	
CLOSE APR-N TOOL	02:11	17/12-81	269	
CLOSE CHOKE MANIFOLD	02:13	"	269	
OPEN CHOKE MANIFOLD TO BLEED OFF				
WELLHEAD PRESSURE	23:11	"		
START BULLHEADING	23:40	"	261	

GAUGE NO. 4 FAILED WHILE UNDER DELAY AND GAVE NO DATA. GAUGE NO.0017 DEVELOPED AN ELECTRONICS FAULT AT 04:27 ON 17/12-81 AND GAVE NO RELIABLE DATA THEREAFTER.

M.R.P.G. PRESSURES ARE RELATIVE TO GAUGE CLOCK TIMES.

S.P.G. PRESSURES ARE RELATIVE TO TIME GRADIENT CALCULATED FROM SURFACE TIMES.



1/18/82

SPERRY-SUN INTERNATIONAL INC.  
MAGNETIC RECORDING PRESSURE GAUGE REPORT

PAGE 1

ESSO EXPLORATION  
SLEIPNER  
15/8-1

OFFSHORE NORWAY  
14TH DECEMBER 1981  
MRPG-1045-NOR

INITIAL FLOW PERIOD GAUGE NO.0017 SENSING DEPTH AT 3902.71M

DELTA TIME	GAUGE PRESSURE	TIME	DATE	
-0.050	562.998	10:48	16-12-81	OPEN APR-N TOOL
0.017	471.439	10:52		OPEN WELL ON 20/64" ADJ. CHOKE
0.083	462.857	10:56		END OF FLOW PERIOD

1/18/82

SPERRY-SUN INTERNATIONAL INC.  
MAGNETIC RECORDING PRESSURE GAUGE REPORT

PAGE 1

ESSO EXPLORATION  
SLEIPNER  
15/8-1

OFFSHORE NORWAY  
14TH DECEMBER 1981  
MRPG-1045-NOR

INITIAL BUILD-UP PERIOD GAUGE NO.0017 SENSING DEPTH AT 3902.71M T=0.083

DELTA TIME	GAUGE PRESSURE	TIME	DATE
0.017	470.357	11: 0	16-12-81
0.083	471.359	11: 4	
0.150	471.239	11: 8	
0.217	471.439	11:12	
0.283	471.399	11:16	
0.350	471.119	11:20	
0.417	471.399	11:24	
0.483	471.439	11:28	
0.550	471.399	11:32	
0.617	471.239	11:36	
0.683	471.319	11:40	
0.750	471.520	11:44	
0.817	471.359	11:48	
0.883	471.119	11:52	
0.950	471.560	11:56	
1.017	471.479	12: 0	
1.083	471.359	12: 4	
1.150	471.319	12: 8	
1.217	471.078	12:12	
1.283	471.560	12:16	
1.350	471.399	12:20	
1.417	471.239	12:24	



1/18/82

SPERRY-SUN INTERNATIONAL INC.  
MAGNETIC RECORDING PRESSURE GAUGE REPORT

PAGE 1

ESSO EXPLORATION  
SLEIPNER  
15/8-1OFFSHORE NORWAY  
14TH DECEMBER 1981  
MRPG-1045-NDR

FINAL FLOW PERIOD GAUGE NO.0017 SENSING DEPTH AT 3902.71M

DELTA TIME	GAUGE PRESSURE	TIME	DATE	
-0.017	471.239	12:24	16-12-81	OPEN APR-N TOOL AND CHOKE
0.050	463.138	12:28		MANIFOLD ON 20/64" ADJ. CHOKE
0.117	459.368	12:32		CHANGE TO 30/64" ADJ. CHOKE
0.183	442.243	12:36		
0.250	445.251	12:40		
0.317	447.938	12:44		
0.383	445.853	12:48		
0.450	455.879	12:52		
0.517	436.027	12:56		
0.583	441.602	13: 0		GAS TO SURFACE
0.650	453.593	13: 4		
0.717	463.940	13: 8		CHANGE TO 40/64" ADJ. CHOKE
0.783	458.045	13:12		CHANGE TO 30/64" ADJ. CHOKE
0.850	460.852	13:16		CHANGE TO 32/64" FIXED CHOKE
0.917	436.188	13:20		
0.983	437.271	13:24		
1.050	439.717	13:28		
1.117	442.123	13:32		
1.183	442.083	13:36		
1.250	442.524	13:40		
1.317	442.685	13:44		
1.383	442.805	13:48		
1.450	443.326	13:52		
1.517	443.246	13:56		
1.583	443.206	14: 0		
1.650	443.888	14: 4		
1.717	444.048	14: 8		
1.783	444.128	14:12		
1.850	444.128	14:16		
1.917	444.128	14:20		
1.983	444.650	14:24		
2.050	444.650	14:28		
2.117	444.369	14:32		
2.183	444.971	14:36		
2.250	444.810	14:40		
2.317	444.730	14:44		
2.383	445.051	14:48		
2.450	444.730	14:52		
2.583	445.331	15: 0		
2.650	445.051	15: 4		
2.717	445.652	15: 8		
2.783	445.492	15:12		
2.850	445.773	15:16		
2.917	445.813	15:20		
2.983	445.773	15:24		
3.050	446.254	15:28		

ESSO EXPLORATION  
SLEIPNER  
15/8-1OFFSHORE NORWAY  
14TH DECEMBER 1981  
MRPG-1045-NOR

FINAL FLOW PERIOD GAUGE NO.0017 SENSING DEPTH AT 3902.71M

DELTA TIME	GAUGE PRESSURE	TIME	DATE
3.117	445.933	15:32	16-12-81
3.183	445.773	15:36	
3.250	446.254	15:40	
3.317	446.093	15:44	
3.383	446.093	15:48	
3.450	446.294	15:52	
3.517	446.214	15:56	
3.583	446.655	16: 0	
3.650	446.334	16: 4	
3.717	446.174	16: 8	
3.783	446.615	16:12	
3.850	446.495	16:16	
3.917	446.535	16:20	
3.983	446.695	16:24	
4.050	446.535	16:28	
4.117	447.096	16:32	
4.183	446.815	16:36	
4.250	446.775	16:40	
4.317	447.136	16:44	
4.383	446.976	16:48	
4.450	446.936	16:52	
4.517	447.096	16:56	
4.583	447.016	17: 0	
4.650	447.457	17: 4	
4.717	447.256	17: 8	
4.783	447.096	17:12	
4.850	447.577	17:16	
4.917	447.297	17:20	
4.983	447.297	17:24	
5.050	447.377	17:28	
5.117	447.457	17:32	
5.183	447.818	17:36	
5.250	447.577	17:40	
5.317	447.377	17:44	
5.383	447.738	17:48	
5.450	447.658	17:52	
5.517	447.537	17:56	
5.583	447.818	18: 0	
5.650	447.698	18: 4	
5.717	447.858	18: 8	
5.783	447.778	18:12	
5.850	447.658	18:16	
5.917	448.059	18:20	
5.983	447.898	18:24	
6.050	447.818	18:28	
6.117	448.018	18:32	
6.183	448.059	18:36	

FLOWING TO SEPARATOR

1/18/82

SPERRY-SUN INTERNATIONAL INC.  
MAGNETIC RECORDING PRESSURE GAUGE REPORT

PAGE 3

ESSO EXPLORATION  
SLEIPNER  
15/8-1

OFFSHORE NORWAY  
14TH DECEMBER 1981  
MRPG-1045-NOR

FINAL FLOW PERIOD GAUGE NO.0017 SENSING DEPTH AT 3902.71M

DELTA TIME	GAUGE PRESSURE	TIME	DATE
6.250	448.420	18:40	16-12-81
6.317	448.099	18:44	
6.383	447.898	18:48	
6.450	448.420	18:52	
6.517	448.219	18:56	
6.583	448.179	19: 0	
6.650	448.339	19: 4	
6.717	448.179	19: 8	
6.783	448.700	19:12	
6.850	448.420	19:16	
6.917	448.179	19:20	
6.983	448.700	19:24	
7.050	448.420	19:28	
7.117	448.460	19:32	
7.183	448.660	19:36	
7.250	448.540	19:40	
7.317	448.941	19:44	
7.383	448.139	19:48	
7.450	448.339	19:52	
7.517	449.583	19:56	
7.583	449.342	20: 0	
7.650	441.642	20: 4	
7.717	442.564	20: 8	
7.783	442.364	20:12	
7.850	443.046	20:16	
7.917	442.685	20:20	
7.983	442.604	20:24	
8.050	442.925	20:28	
8.117	442.925	20:32	
8.183	443.086	20:36	
8.250	442.925	20:40	
8.317	442.604	20:44	
8.383	443.246	20:48	
8.450	443.086	20:52	
8.517	442.965	20:56	
8.583	443.046	21: 0	
8.650	443.166	21: 4	
8.717	443.647	21: 8	
8.783	443.326	21:12	
8.850	443.005	21:16	
8.917	443.567	21:20	
8.983	443.286	21:24	
9.050	443.246	21:28	
9.117	443.487	21:32	
9.183	443.326	21:36	
9.250	443.928	21:40	
9.317	443.607	21:44	

CHANGE TO 40/64" FIXED CHOKE



1/18/82

SPERRY-SUN INTERNATIONAL INC.  
MAGNETIC RECORDING PRESSURE GAUGE REPORT

PAGE 4

ESSO EXPLORATION  
SLEIPNER  
15/8-1

OFFSHORE NORWAY  
14TH DECEMBER 1981  
MRPG-1045-NOR

FINAL FLOW PERIOD GAUGE NO.0017 SENSING DEPTH AT 3902.71M

DELTA TIME	GAUGE PRESSURE	TIME	DATE
9.383	443.326	21:48	16-12-81
9.450	443.727	21:52	
9.517	443.767	21:56	
9.583	444.008	22: 0	
9.650	443.808	22: 4	
9.717	443.567	22: 8	
9.783	444.168	22:12	
9.850	443.848	22:16	
9.917	443.808	22:20	
9.983	443.968	22:24	
10.050	443.888	22:28	
10.117	444.369	22:32	
10.183	444.048	22:36	
10.250	443.647	22:40	
10.317	444.209	22:44	
10.383	444.128	22:48	
10.450	444.168	22:52	
10.517	444.128	22:56	
10.583	443.808	23: 0	
10.650	444.489	23: 4	
10.717	444.409	23: 8	
10.783	444.088	23:12	
10.850	444.289	23:16	
10.917	444.329	23:20	
10.983	444.650	23:24	
11.050	444.329	23:28	
11.117	444.088	23:32	
11.250	444.489	23:40	
11.317	444.489	23:44	
11.383	444.369	23:48	
11.450	444.048	23:52	
11.517	444.650	23:56	
11.583	444.449	0: 0	17-12-81
11.650	444.329	0: 4	
11.717	444.449	0: 8	
11.783	444.329	0:12	
11.850	444.850	0:16	
11.917	444.529	0:20	
11.983	444.289	0:24	
12.050	444.610	0:28	
12.117	444.569	0:32	
12.183	444.890	0:36	
12.250	444.650	0:40	
12.317	444.249	0:44	
12.383	444.971	0:48	
12.450	444.650	0:52	
12.517	444.529	0:56	

4/18/82

SPERRY-SUN INTERNATIONAL INC.  
MAGNETIC RECORDING PRESSURE GAUGE REPORT

PAGE 5

ESSO EXPLORATION  
SLEIPNER  
15/8-1

OFFSHORE NORWAY  
14TH DECEMBER 1981  
MRPG-1045-NOR

FINAL FLOW PERIOD GAUGE NO.0017 SENSING DEPTH AT 3902.71M

DELTA TIME	GAUGE PRESSURE	TIME	DATE
12.583	444.690	1: 0	17-12-81
12.650	444.489	1: 4	
12.717	445.091	1: 8	
12.783	444.690	1:12	
12.850	444.529	1:16	
12.917	444.770	1:20	
12.983	444.730	1:24	
13.050	444.850	1:28	
13.117	444.730	1:32	
13.250	444.971	1:40	
13.450	444.810	1:52	
13.517	444.529	1:56	
13.583	445.171	2: 0	
13.650	444.850	2: 4	
13.717	444.690	2: 8	

END OF FLOW PERIOD

1/18/82

SPERRY-SUN INTERNATIONAL INC.  
MAGNETIC RECORDING PRESSURE GAUGE REPORT

PAGE 1

ESSO EXPLORATION  
SLEIPNER  
15/8-1

OFFSHORE NORWAY  
14TH DECEMBER 1981  
MRPG-1045-NOR

FINAL BUILD-UP PERIOD GAUGE NO.0017 SENSING DEPTH AT 3902.71M T=13.73

DELTA TIME	GAUGE PRESSURE	TIME	DATE
0.017	464.662	2:12	17-12-81
0.083	466.346	2:16	
0.150	469.033	2:20	
0.283	468.712	2:28	
0.350	469.113	2:32	
0.417	469.113	2:36	
0.483	469.434	2:40	
0.550	469.153	2:44	
0.617	468.873	2:48	
0.683	469.354	2:52	
0.750	469.274	2:56	
1.017	469.835	3:12	
1.083	469.595	3:16	
1.150	481.064	3:20	
1.217	481.425	3:24	
1.617	481.425	3:48	
1.683	481.706	3:52	
1.750	469.835	3:56	
1.817	469.595	4: 0	
1.883	469.996	4: 4	
1.950	469.956	4: 8	
2.017	470.076	4:12	

