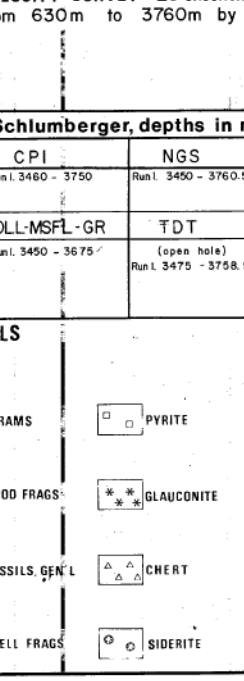


COMPLETION LOG Scale 1:500

COORDINATES: 58° 25' 34.06" N 15° 02' 28.82" E
K.B. 25m
WATER DEPTH: 1.08 m
TOTAL DEPTH: 3.765 m
DEEPEST FORM: PEN: Skogerrok Fm. Trioblic.

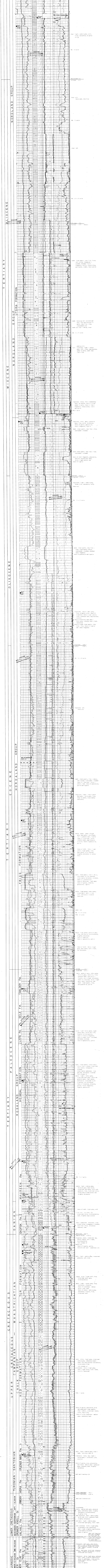


CONTRACTORS: Ross Drilling Co A/S
GEOLOGISTS: S. H. Waage, T. M. Waage, S. A. Waage, T. Waage

DATE: 15 Dec. 1978
VELOCITY SURVEY: 28 checkshots, levels from 630m to 3700m by 55L.

LOGS RUN (Schlumberger depths in m (KSE)) table with columns for ISF/SONIC, FDC-GR, HDY, CEM-GR, CLMGR-GR, TOT, LSC-3900.

LITHOLOGIC SYMBOLS table listing various rock types and their corresponding symbols.



Scale 1:500
Notes on the log including lithological descriptions and well completion details.