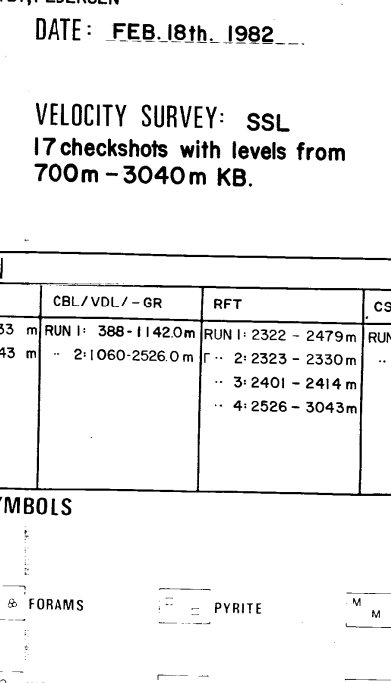


ESSO / N HYDRO
15/9-9
COMPLETION LOG
 Scale 1:500

COORDINATES: 58° 20' 47.4" N
 01° 53' 24.6" E
W.B.: 25 m
WATER DEPTH: 83 m
TOTAL DEPTH: 3044 m
DEEPEST FORM. PEN.: PERMAN
SPUD DATE: 4 MAY 1991
RIG RELEASE DATE: 14 JULY 1991
WELL STATUS: P A A
RIG: NORDRAUG
CONTRACTOR: ROSS DRILLING CO.
GEOLOGISTS: Ø. ØSTAD, L. ENVIEN, N. LIND, N. Ø. RO, S. Ø. ØSTBY, P. Ø. ØSTBY
PREPARED BY: J. KRISTENSEN
DATE: FEB. 18th. 1992



CASING DATA:
 30" at 158 m
 20" at 487 m
 12" at 1142 m
 9" at 2527 m

FORMATION INTEGRITY TEST

1.78	g/cc
1.79	
1.82	

equi. mud weight

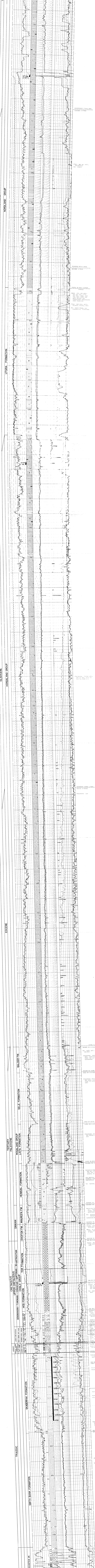
VELOCITY SURVEY: SSL
 17 checks with levels from 700m - 3040m KB.

LOGS RUN

LOG	START	STOP	DEPTH	LOG	START	STOP	DEPTH
ISF/SONIC - UK	81	499	83	FDC/NL - GR	1142	1150	1142
2 - 487/1154	1154	1154	1154	2 - 2527	2527	2527	2527
3 - 1142/2040	2040	2040	2040	3 - 2527	2527	2527	2527
4 - 2527/3044	3044	3044	3044	4 - 2527	2527	2527	2527

LITHOLOGIC SYMBOLS

SAND	LIMESTONE	SHALE	CLAY	SLT	SLT	SLT	SLT
SLT	SLT	SLT	SLT	SLT	SLT	SLT	SLT
SLT	SLT	SLT	SLT	SLT	SLT	SLT	SLT



SYSTEM SERIES
 QUATERNARY
 TERTIARY

STAGE GROUP
 HOLOCENE
 PLEISTOCENE
 EOCENE
 PALEOCENE
 TERTIARY

FORMATION
 SKAGERAK FORMATION
 ZECHSTEIN GR.
 PERMAN
 ROTLEGENES GR.
 SMITH BANK FORMATION
 TOR FORMATION
 MAUREN FM.
 HEIMDAL FORMATION
 HEIMDAL FORMATION
 EKFISK FM.
 MAUREN FM.
 SELE FORMATION
 SELE FORMATION
 BALDER FM.
 BALDER FM.
 LISTA FORMATION
 LISTA FORMATION
 ROSALAND GROUP
 ROSALAND GROUP
 DANIAN
 DANIAN
 TOR FORMATION
 TOR FORMATION
 MAUREN FM.
 MAUREN FM.
 HEIMDAL FORMATION
 HEIMDAL FORMATION
 EKFISK FM.
 EKFISK FM.
 MAUREN FM.
 MAUREN FM.
 SELE FORMATION
 SELE FORMATION
 BALDER FM.
 BALDER FM.