

COORDINATES: 58° 24' 02,153" N
 01° 53' 41,79" E

WATER DEPTH: 23m
 TOTAL DEPTH: 97,0m
 DEPTH OF LAST BIT: 174m
 DEPTH OF LAST CASING: 174m
 DEPTH OF LAST LINER: 2575m

PERM. TRIASSIC
 17th Sept 1981
 23rd Dec 1981
 Plugged and Abandoned

ROSS DRILLING CO.
 S.M. LARSEN, R. WYLENO, A. STORLI
 S.S. LARSEN, J. H. ØSTBY

PREPARED BY: O.V. GREINER, J.M. ØSTBY
 DATE: 20. JUNE 1982

CASING DATA:
 30 at 174m
 174 at 174m
 174 at 174m
 7" Liner at 2575m

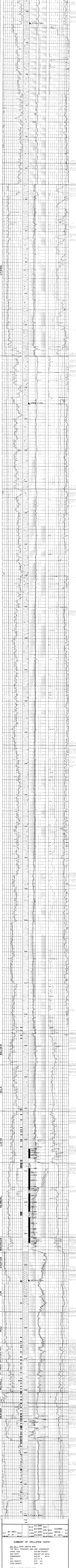
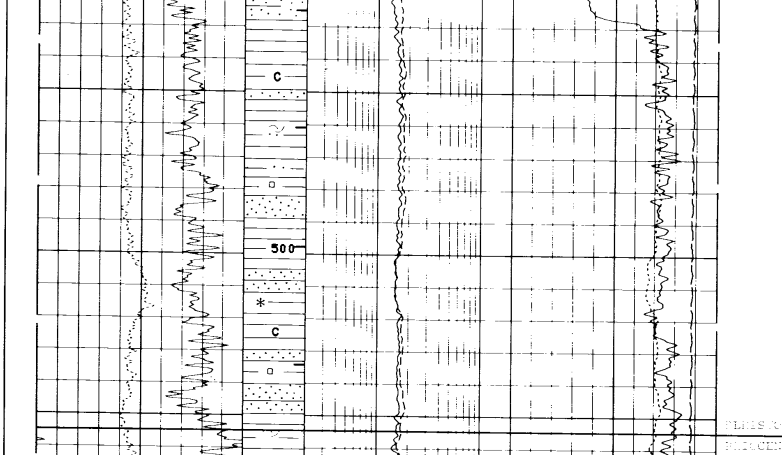
VELOCITY SURVEY: 17 checkshots,
 Levels from 685-2850 M by SSL

LOGS RUN (mRKB)

ISF/BHC-GR	FDC/CAL-GR	DLL/MSF-GR	HOT	CONT. DIMETER	SFT	CBL-GR
RUN 1: 1174-463,3	RUN 1: 569-175	RUN 1: 2340-2540	RUN 1: 2100-2575	RUN 1: 2088-2573	RUN 1: 2349-2578	RUN 1: 450-145
RUN 2: 350-582	RUN 2: 159-256	RUN 2: 2159-2649	RUN 2: 2575-2849	RUN 2: 2676-2855	RUN 2: 2790-2838	RUN 2: 900-2374,5
RUN 3: 569-174	RUN 3: 275-289,5	RUN 3: 2275-2847,5				RUN 3: 2490-2509,5
RUN 4: 159-242	RUN 4: 275-284,5					
RUN 5: 2340-2540						
RUN 6: 1275-246						
RUN 7: 2790-2846						

LITHOLOGIC SYMBOLS

SAND	LIMESTONE	ANHYDRITE	FORAMS	WHITE	MICA
SILT	CHALK	COAL	WOOD FRACS	GLAUCONITE	STYLOLITES
SILTSTONE	DOLOMITE	TUFF	FOSSILS GENL	CHERT	BURROWS
CLAY	MARL	SALT	SMELT FRACS	SIBERITE	FRACURES
CLAYSTONE					
SHALE					



SUMMARY OF DRILLSTEM TESTS:

DST No.	Produced Gas and Condensate	Choke Size	Gas Rate	Condensate	Gas Gravity	Cond. Gravity
1 (2197-2807M RKB)	566,337 M ³ /D	15,9 MM (40/64")	233,795 M ³ /D	104 M ³ /D	0,74 S.G.	0,64 S.G.
2 (2432-2440 M RKB)	566,337 M ³ /D	12,7 MM (32/64")	233,795 M ³ /D	104 M ³ /D	0,74 S.G.	0,64 S.G.
3 (2435-2415 M RKB)	566,337 M ³ /D	15,9 MM (40/64")	233,795 M ³ /D	104 M ³ /D	0,74 S.G.	0,64 S.G.

FOR RFT RESULTS SEE THE COMPLETION REPORT