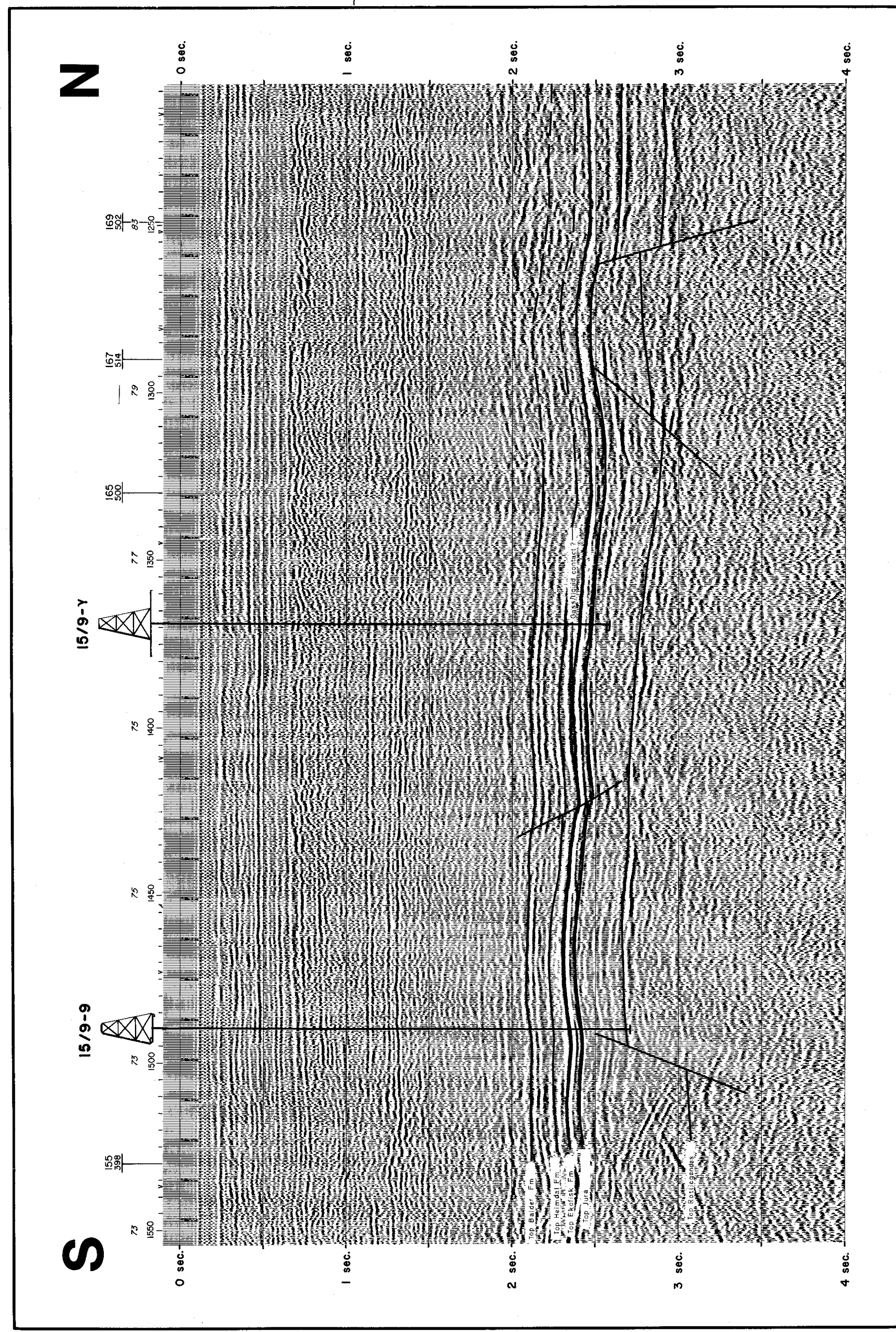
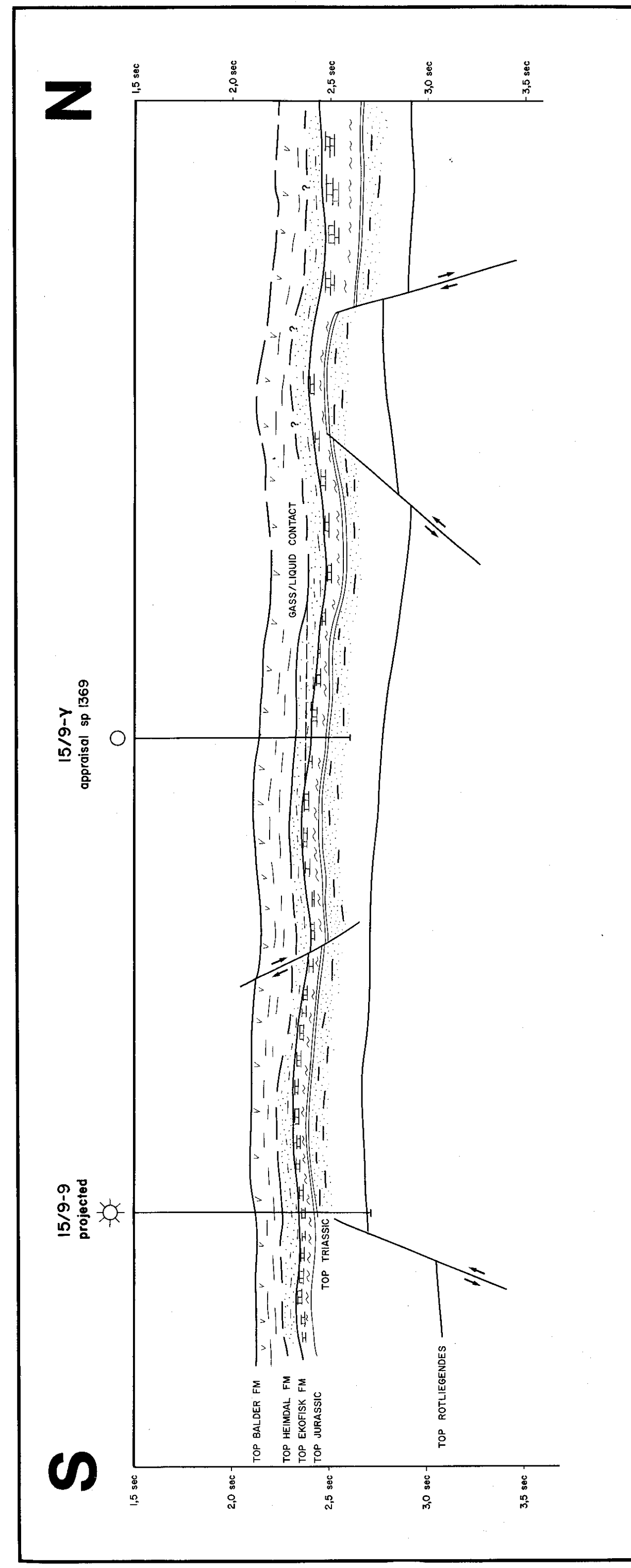


PL 046, 15/9-Y, APPRAISAL WELL ON Y PROSPECT

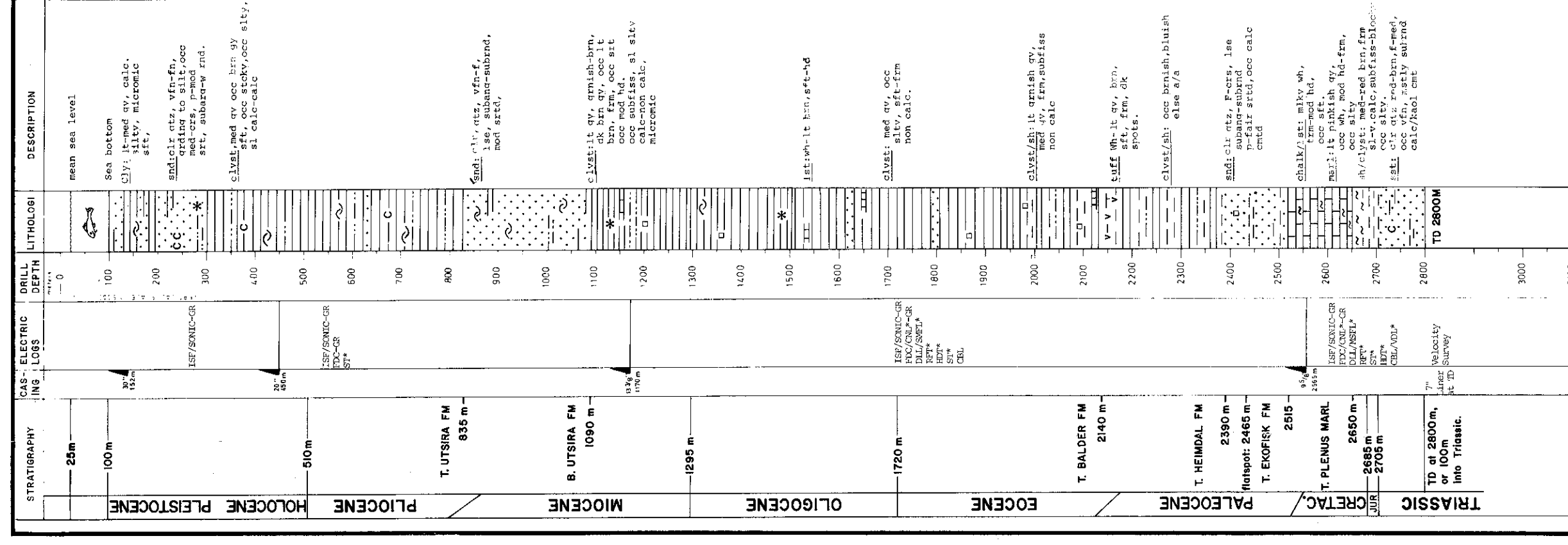
LINE 510-325, MIGR. TIME SECTION



GEOSEISMIC SECTION THROUGH LINE 510-325



15/9-Y Appraisal



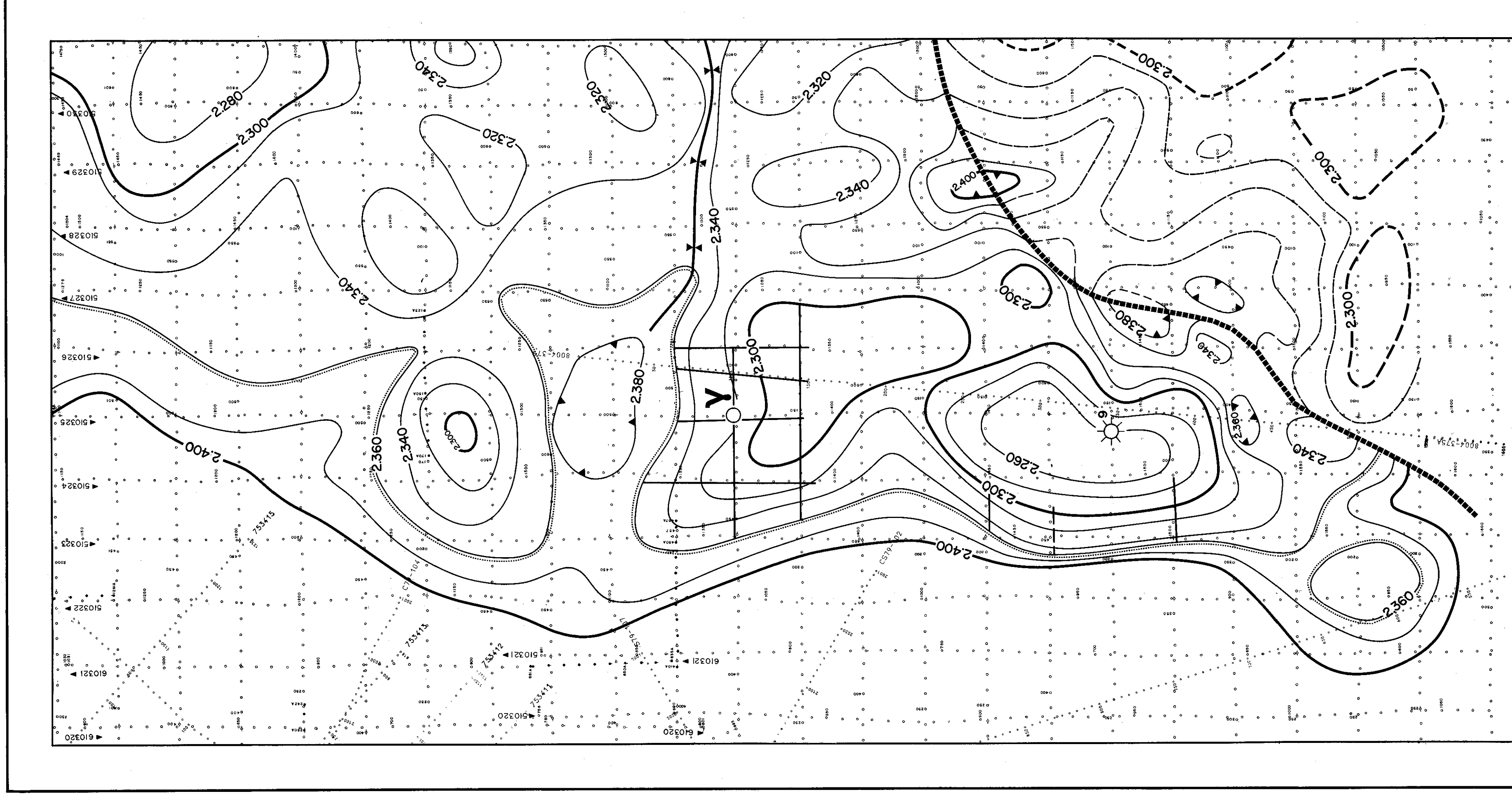
Form/Series	Depth (mssl)		Two way time (s)		VA (m/s)		Comments
	15/9-9	15/9-Y	15/9-9	15/9-Y	15/9-9	15/9-Y	
T. Utsira Fm.	810 : 30	830	0.874	0.888	1883	1848	
B. Utsira Fm.	1055 : 30	1067	1.130	1.134	1884	1916	
Oligocene	1270 : 30	1269	1.325	1.325	1916	1916	Poor reflector
Eocene	1695 : 30	1700	1.730	1.737	1959	1964	
Balder Fm.	2115 : 40	2095	2.130	2.112	1965	1984	Gas/Liquid contact
Ekofisk Fm.	2335 : 40	2337	2.400	2.334	2075	2066	Estim. at 2440 m
Plinius M.	2625 : 40	2546	2.450	2.397	2134	2124	
U. Krit	2650 : 40	2587	2.476	2.419	2141	2138	
T. Jura	2650 : 50	2600	2.480	2.458	2145	2143	
T. Trias	2650 : 60	2619	2.485	2.438	2148	2148	
TD	2760						TD 2760 or 100 m into Triassic

15/9-Y GEOLOGICAL PROGRAM

Drilling Hazards

At the location the seabed is even and it consists most probably of fine sands. Reflection anomalies are found at 660-710m they may be caused by gas in sandstones, but are most probably caused by lithological changes. In well 15/9-3, 15.5 km north of this location, a high pressure zone occurs at top of Jurassic. This local zone is not expected in this well, but it's presence should not be ignored.

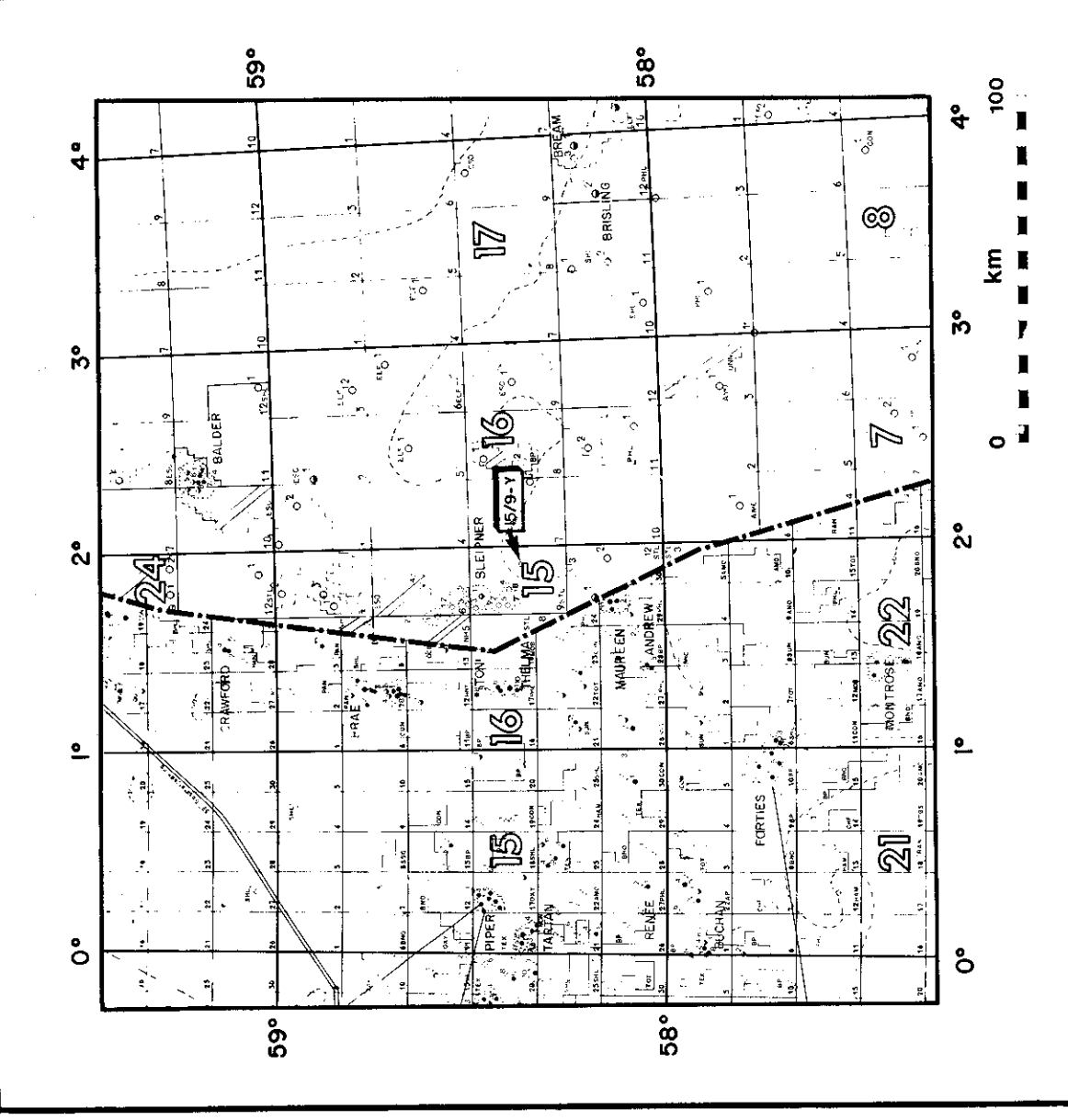
STRUCTURE MAP IN TIME



N.B. Map constructed by adding assumed isopach of Heimdal Fm to Top Ekofisk time structure map.

Seismic atop line of Heimdal Fm
Possible GWC from "Flat spot" indications
Flat spot indications
Structural contour on Top Ekofisk

INDEX MAP - NORTH SEA



LICENCE INFORMATION

AREA Norwegian North Sea
BLOCK 15/9
LICENCE PL 046
LICENCEES Statoil, Esso, Norsk Hydro
OPERATOR Statoil

WELL INFORMATION

15/9-Y
CLASSIFICATION APPRAISAL
COORDINATES 58° 24' 03.2"N
01° 53' 41.9"E
SEISMIC LOCATION Line 510-325 sp.1369
DRILLING RIG ROSS RIG
WATER DEPTH 88.5 m
K.B.E. 25 m
PROJECTED T.D. 2800 m



Statoil
OPERATOR

UND-ARKIVET
No: 1 01

DISPLAY PANEL
PL 046
15/9-Y Appraisal Well

Statoil Norge AS
15/9-Y
15/9-Y