

COMPANY: STATOIL

WELL: 15/9-11

DISPLAY OF WELL OPERING LOGS

Each file on this display consists of three traces:-

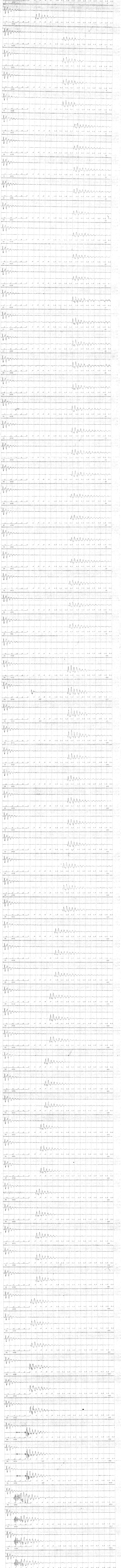
- TRACE 1 50 Hz timer trace
- TRACE 2 Gun Hydrophone Signal (Reverse Polarity)
- TRACE 3 Well Geophone Signal

Timing lines are displayed at 0.1 s intervals and are labelled underneath each file of three traces.

The following information appears above each file, in the order shown:-

Sequential Record Number; Record length in samples; error messages (details below); Field tape number combined with record number on field tape.

- ERRR MESSAGES: PAR - Parity error on input tape
- OWP - Data on field tape overcales
- TRM - Timing error on input tape (see with its sample position)
- SAT - Software rate error
- TSRU - Disk read/write error



PLOT THESE USING 15P10