

ESSO/N. HYDRO

COMPLETION LOG

Scale 1:500

COORDINATES: 58° 27' 23.17" N, 01° 43' 04.01" E, 25 m

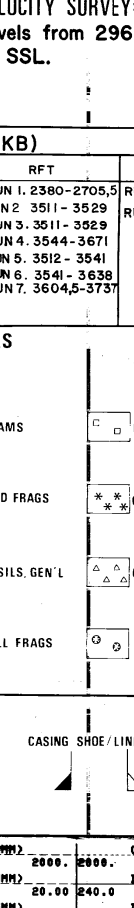
WATER DEPTH: 110 m

CONTRACTOR: SL ERIKSEN FM

RIG STATUS: FLUIGED AND ABANDONED

PREPARED BY: C. BAKER, E. HANSTEN, K. SAGA

CASING DATA: 30" at 500 m, 12" at 1500 m, 8 1/2" at 2795 m



VELOCITY SURVEY: 23 checkshots, Levels from 296 to 3746m RKB by SSL.

LOGS RUN (mRKB)

Table with 10 columns: WFL, WFL, WFL, WFL, WFL, WFL, WFL, WFL, WFL, WFL. Contains well identification numbers.

LITHOLOGIC SYMBOLS

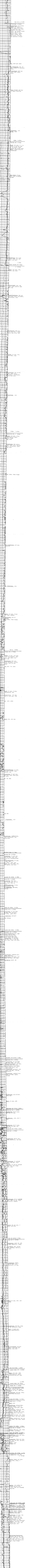
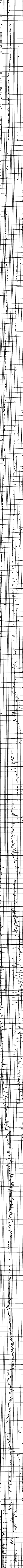
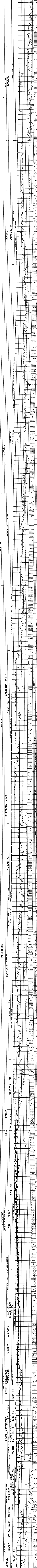
Lithologic symbols table with columns for Sand, Siltstone, Shale, etc., and corresponding symbols for various rock types like Sandstone, Limestone, etc.

DEPTH (RKB)

0 to 3746 m

SEA FLOOR

1200 m



Geological and geophysical descriptions of the well logs, including lithological details and velocity data.