

DIGITAL WIRELINE LOGS PACKAGE  
 SIMON PETROLEUM TECHNOLOGY  
 COMPLETION LOG

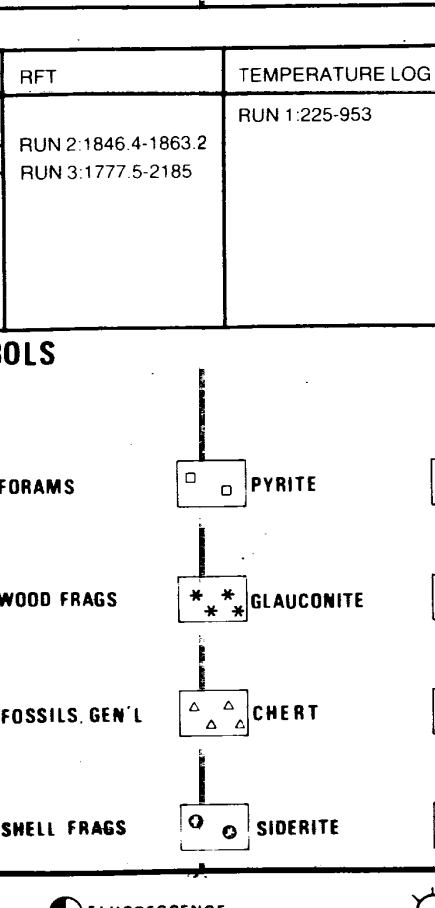
72



**statoil / NORSK HYDRO / SAGA PETRO**

**34/10 - 19**  
**COMPLETION LOG**  
 Scale 1:500

**COORDINATES:** 61° 11' 10.86" N  
 02° 15' 30.55" E  
**K.B.:** 22.0m ABOVE M.S.L.  
**WATER DEPTH:** 192.5m  
**TOTAL DEPTH:** 2218m RKB  
**DEEPEST FORM. PEN.:** HEGRE GROUP  
**SPUD DATE:** 05 OCT 1983  
**RIG RELEASE DATE:** 12 DEC 1983  
**WELL STATUS:** P&A-DRY WELL  
**RIG:** ROSS ISLE  
**CONTRACTOR:** ROSS DRILLING CO A/S  
 S. SVINODAL, K. RUDOLF M. PRUDEN, L. ANDERSSON  
 M. HELLE, W. ØRSTAD  
**PREPARED BY:** O. PETERSON / A. STORLI  
**APPROVED BY:** E. UNDERSRUD  
**DATE:** APRIL 1984



**CASING DATA:**  
 30" at 288m (RKB)  
 20" at 969m (RKB)  
 16" LINER at 1073m (RKB)  
 13 3/4" at 1483m (RKB)  
 9 3/4" at 1689m (RKB)

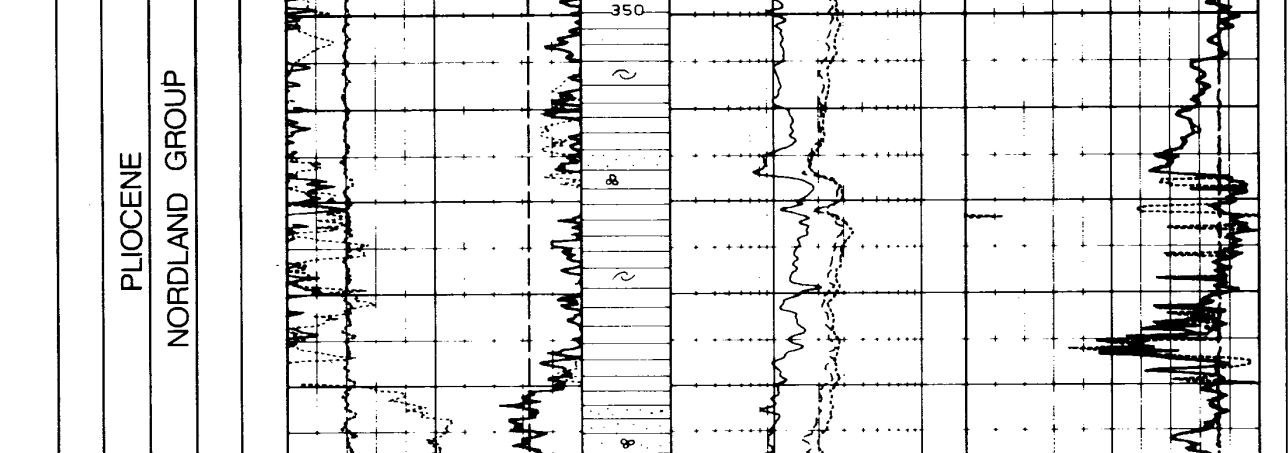
**VELOCITY SURVEY:** 30 CHECKSHOTS  
 CONDUCTED BY SSL AT LEVELS FF  
 905 TO 2214m (RKB)

**LOGS RUN**

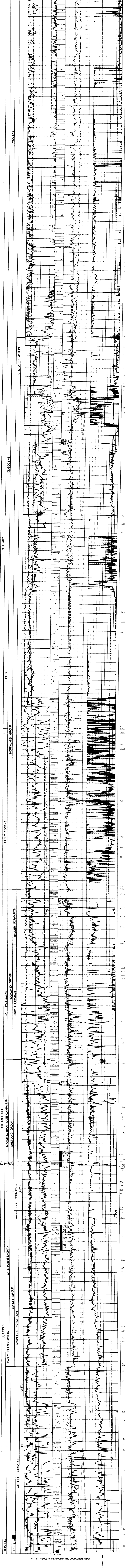
ISF-LSR-MSFL-GR	LCL-CNL-GR	CBL-VOL-GR-CCL	HDT	RFT	TEMPERATURE LOG
RUN 1: 214-5-977.5	RUN 1: 288-5-977.5	RUN 1: 215-950	RUN 1: 1481-1700	RUN 2: 1846.4-1863.2	RUN 1: 225-953
RUN 2: 968-1070	RUN 2: 1073-1473	RUN 2: 260-1075	SHOT	RUN 3: 1777.5-2185	
RUN 3: 1073-1473	RUN 3: 1483-2217	RUN 3: 1050-1480	SLIT		
RUN 4: 1688-2216	MSFL-CNL-GR	RUN 4: 1430-1690	RUN 1: 1680-2216		
ISF-BHC-MSFL-GR					
RUN 4: 1481-1700	RUN 6: 1687-1874				
ISF-BHC-GR					
RUN 5: 1688-1846					

**LITHOLOGIC SYMBOLS**

SAND SANDSTONE	LIMESTONE	ANHYDRITE	FORAMS	PYRITE
SILT SILTSTONE	CHALK	COAL LIGNITE	WOOD FRAGS	GLAUCONITE
CLAY CLAYSTONE	DOLOMITE	TUFF	FOSSILS GEN'L	CHEERT
SHALES	MARL	SALT	SHELL FRAGS	SIDERITE



**REMARKS:** JOB NO.: 840527  
 THIS LOG WAS PREPARED FOR THE WELL SITE, MANAGED, AND OPERATED BY  
 ROSS DRILLING CO. A/S. THE LOG WAS PREPARED BY O. PETERSON AND A. STORLI.  
 THE LOG WAS CHECKED BY E. UNDERSRUD. THE LOG WAS APPROVED BY E. UNDERSRUD.  
 JOB NO.: 840527  
 SCALE: 1:500



RFT-RESULTS ARE GIVEN IN THE COMPLETION REPORT