

DEPTH: 21 FT below 3FC
 DIGITAL WIRELINE LOGS PACKAGE
 SIMON PETROLEUM TECHNOLOGY

WELL: 25/1-3B
 LICENSE: 024
 OPERATOR: FRIGG
 COUNTRY: NORWAY

NORWAY
 (OFF-SHORE)
COMPOSITE - LOG

COORDINATES:
 X: 233 05"
 Y: 584 05"
 WATER DEPTH: 105 m
 ELEVATION: KR23, 83 m

SPUDDED: 14-11-71
 START DRILLING: 14-11-71
 AT TD: 19-12-71
 COMPLETED: 27-01-72

RIG: PENADOME 81
 CONTRACTOR: NEPTUNE
 MUD-LOGGING: GEOSERVICES

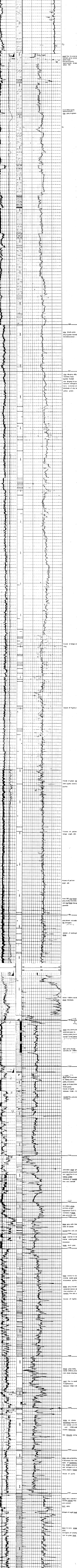
T.D. DRILLER: 2 872 m
 T.D. LOGGER: 2 874 m

WELL-SITE GEOLOGISTS: Y. GALY, C. LAMBERT
 APPROVED BY: M. C. BERTHON (date: 31.01.72)

VERTICAL SCALE: 500
 STATUS: gas discovery
 PLUGGED AND ABANDONED

WELL NUMBER: 25/1-3B
 WIRELINE NUMBER: FRIGG

SYMBOLS USED:
 Water flow
 Cut flow on cuttings
 Direct flow on cuttings
 Gas show
 Oil show
 Dry
 Gas
 Oil
 Water, Fil (salinity)
 Location Fix



BROROWEN CLAY MEMBER

635
 clay black-grey silty (gumbo facies) micaceous

910
 clay dk-grey silty micaceous (gumbo facies) thin dk-grey to brn dolomite stringers rare nodules or interbeds of clay beige yellow-green

1182
 traces of green shale with lignitic debris & pyrite
 traces of yellow beige argill. silt.
 traces of yellow argill. silt.
 from 1757 clay/shale dk-grey, silty micromic and clay/shale blue-grey, greenish

1920
 sand very poorly sorted
 well-sorted sand to subang. grains, becoming coarser to the bottom

2026
 silt grey-bluish siltitic at 1988m

2169
 alternates shale grey-greenish-brown (red) and sand fine to coarse micaceous thin interbeds of lignitic fine calc. cement

2229
 silt 2 268 m, shale whitish-bright "fingered" (silt) interbeds of shale grey-greenish, red

2268
 shale grey with thin veins of calcite
 sand fine calc. cement

2289
 sand coarse to very coarse sub-ang. micaceous shale dark grey

2398
 sand coarse to very coarse sub-ang. micaceous pyritic shale grey, traces of greenish-brown shale interbeds of sand fine calc. cement
 traces of lignite

2492
 shale grey silty, below 2 516 m, brown-red shale interbedded

2575
 sand fine to medium calc. cement between 2 546 - 2 558

2642
 shale as above sandstone fine to coarse calc. cement at 2 575 and 2 585, chalky calcite limestone thin dolomite stringers

2711
 sand very coarse to coarse, sandstone fine calc. cement
 marl grey stringers of argill. limst.
 marl to calc. shale grey stringers of chalky, tan to grey limst.

T.D. 2 872 m D.D.