

Norsk Hydro Produksjon a.s, BP-Amoco Norway A/S
 Phillips Petroleum Company Norway



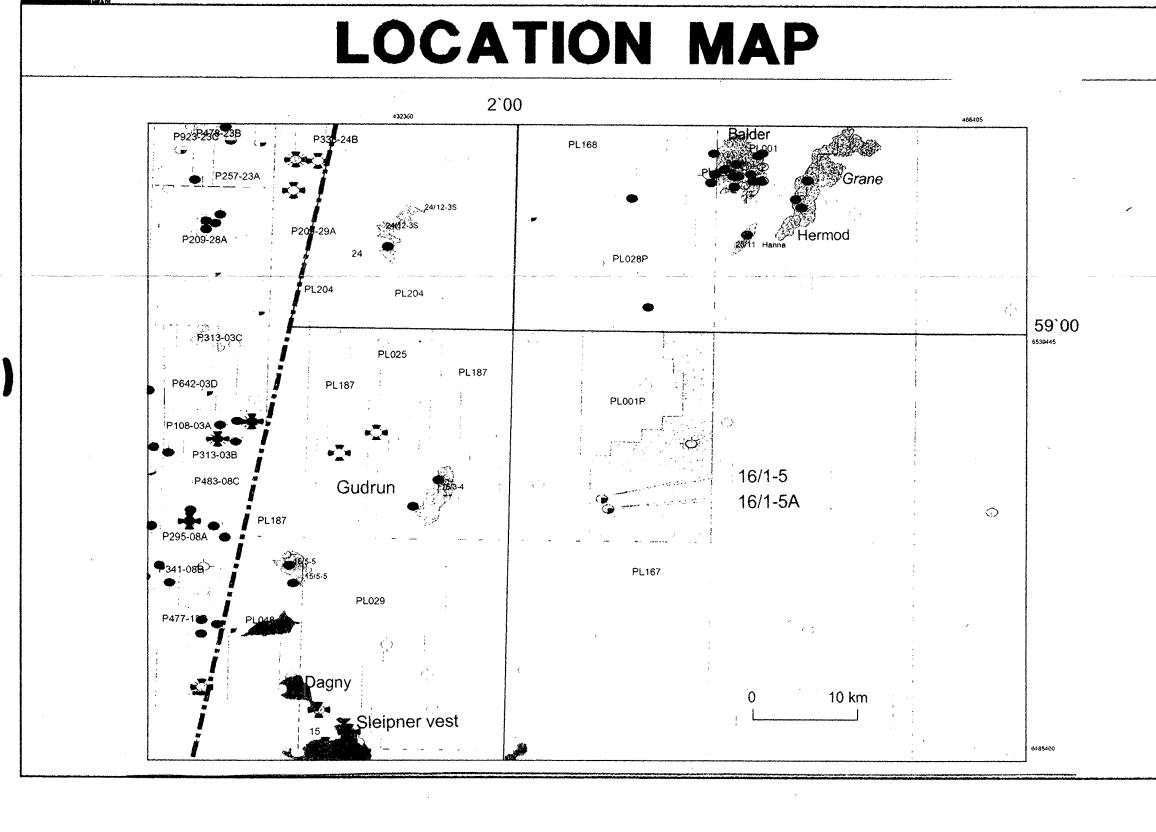
PARTNERS

16/1-5A
 WELL

B-Prospect
 PROSPECT STRUCTURE

COMPOSITE LOG
 1 : 500

AREA: North Sea
 LICENCE: PL 167
 COORDINATES: 58° 47' 53.52" N
 02° 09' 12.14" E
 R.T.: 25m
 WATER DEPTH: 105m
 TOTAL DEPTH: 2150 mMDRT/(-2003.5 mTVD MSL)
 FM. AT T.D.: Viking Group
 SPUD DATE: 21th November 1998
 RIG RELEASE: 8th December 1998
 WELL STATUS: Plugged and Abandoned
 RIG: Byford Dolphin
 CONTRACTOR: Dolphin a.s.
 GEOLOGIST: Kristensen, Johnsen, Lauritsen
 PREPARED BY: J.M. Østby DATE: 10.06.99



CASING DATA	LEAK OFF TESTS	VELOCITY SURVEY
30" casing 191 mMD 13 3/8" casing 1410 mMD	1.81 EMW	No VSP or velocity surveys performed

LOGS RUN	CONTRACTOR: BAKER HUGHES INTEQ
MWD-MPR-MDP tool Run 1: 1427-1674m Run 2: 1674-2123m Run 6: 2123-2150m	NO WIRELINE LOGS

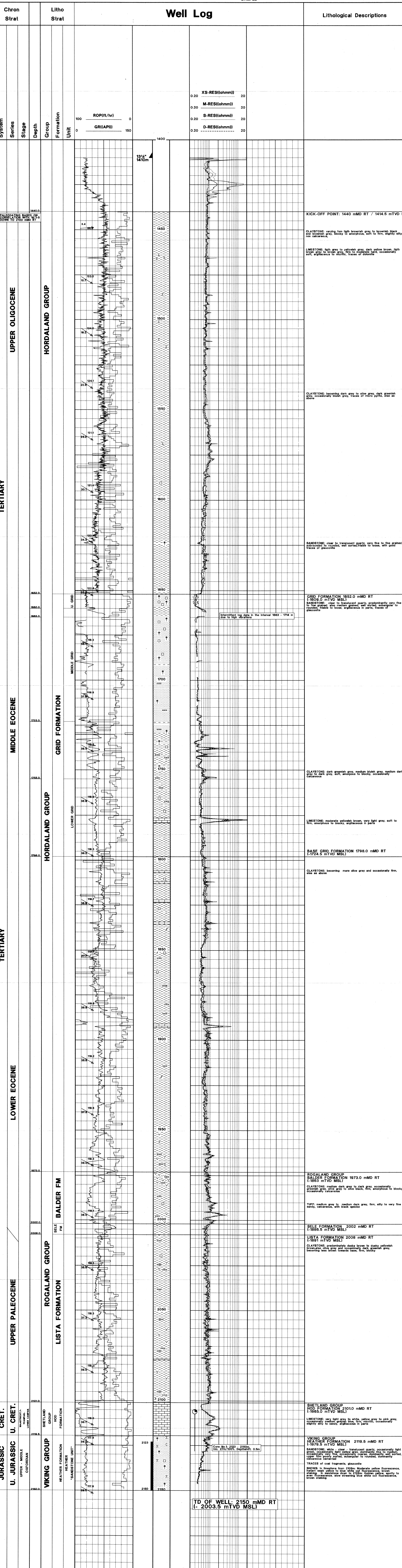
COMMENTS:
 Well 16/1-5A was sidetracked from well 16/1-5 below the 13 3/8" casing at 1440 mMD RT and 8 1/2" hole size was drilled to a TD of 2150 mMD RT.
 An oilbased mud was used throughout. One core was cut. MWD logging was run throughout, while no wireline logging was performed. Hence MWD log curves only, have been used in the composite log. Paleodating was performed for the interval 2100 - 2121 mMD RT only.
 The well was plugged back and permanently abandoned.

LITHOLOGICAL SYMBOLS

CONGLOMERATE	SHALE	MARL	COAL LIGNITE	FORAMS	MCA
SAND SANDSTONE	LIMESTONE	TUFF	WOOD FRAGS	BURROWS	KAOLINITE
SILT SILTSTONE	CHALK	SALT GEN'L	FOSSILS GEN'L	PYRITE	CHERT
CLAY CLAYSTONE	DOLOMITE	ANHYDRITE	SHELL FRAGS	GLAUCONITE	SIDERITE

CUTTINGS/FLUORESCENCE OIL SHOW OIL/GAS SHOW GAS SHOW

AZIMUTH & INCLINATION SIDEWALL CORES CORES DST RFT/FMT CASING SHOE / LINER CHRONO STRAT



Chron Strat	Litho Strat	Well Log	Lithological Descriptions
TERTIARY	HORDALAND GROUP	1440.0 - 1550.0	CLAYSTONE varying from light brownish grey to brownish black and brownish grey. Slightly to firm, slightly silty.
TERTIARY	HORDALAND GROUP	1550.0 - 1650.0	CLAYSTONE becoming dark grey to olive grey, dark brown grey, occasionally black grey. Trace of mica, pyrite, etc. as above.
TERTIARY	HORDALAND GROUP	1650.0 - 1750.0	CLAYSTONE dark greenish grey, medium to dark grey, medium dark grey to dark grey, soft, amorphous to blocky, occasionally calcareous.
TERTIARY	HORDALAND GROUP	1750.0 - 1850.0	LIMESTONE moderate yellowish brown, very light grey, soft to firm, amorphous to blocky, argillaceous in parts.
TERTIARY	HORDALAND GROUP	1850.0 - 1950.0	CLAYSTONE becoming more olive grey and occasionally firm, etc as above.
TERTIARY	HORDALAND GROUP	1950.0 - 2050.0	ROGALAND GROUP BALDER FORMATION 1973.0 mMD RT (-1866.0 mTVD MSL)
TERTIARY	HORDALAND GROUP	2050.0 - 2100.0	CLAYSTONE medium dark grey to dark grey, occasionally brownish grey, soft to firm, amorphous to blocky, occasionally calcareous.
TERTIARY	HORDALAND GROUP	2100.0 - 2121.0	CLAYSTONE becoming more olive grey and occasionally firm, etc as above.
TERTIARY	HORDALAND GROUP	2121.0 - 2150.0	CLAYSTONE becoming more olive grey and occasionally firm, etc as above.