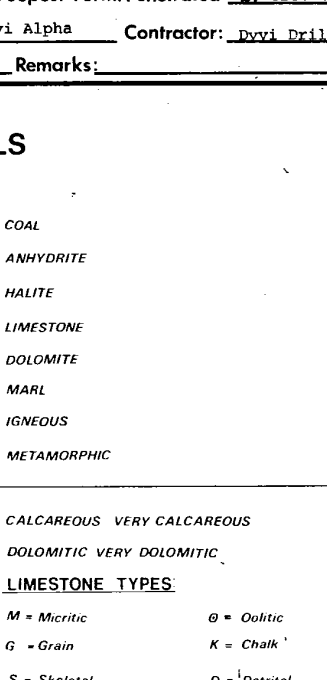
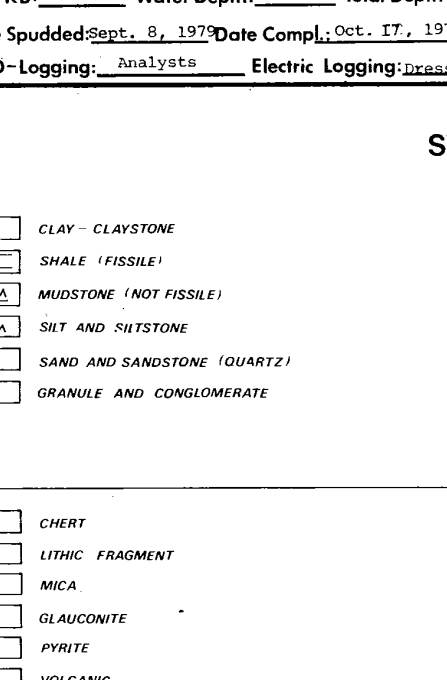


DIGITAL WIRELINE LOGS PACKAGE 1993
 SIMON PETROLEUM TECHNOLOGY

COMPLETION LOG

Esso Exploration and Production Norway Inc. 25/11-8 COMPLETION LOG



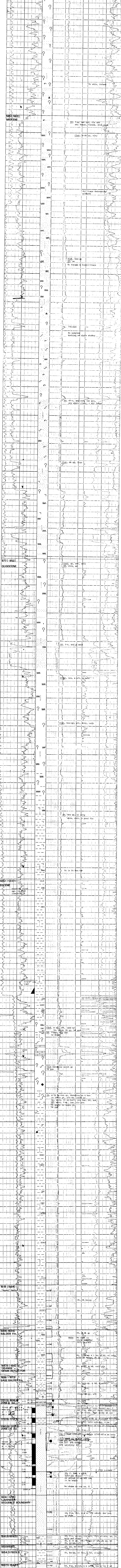
COUNTRY: Norway CONCESSION: ES. 001 COORDINATES: Long: 01°11'27.683"E Lat: 59°14'46.024"N
 Well Classification: Appraisal STATUS: F.A. 3, Oil Well
 Elev. KB: 25 m Water Depth: 125.6 m Total Depth: 1952.3 m Deepest Form: Retracted
 Date Spudded: 1973 Date Completed: 17/12/70 Drift: Alpha Contractor: Dyna Drilling
 MUD-Logging: Analytica Electric Logging: Sarsas-Atlas Remarks:

SYMBOLS

- CLAY-CLAYSTONE
- SHALE / FISSILE
- MUONSTON / MOY FISSILE
- SILT AND SILTSTONE
- SAND AND SANDSTONE / QUARTZITE
- GRANITE AND CONGLOMERATE
- COAL
- ANHYDRITE
- HALITE
- LIMESTONE
- ACQUITY
- MARL
- SILTSTONE
- METAGRAUIC
- CHERT
- LITIC FRAGMENT
- MICA
- GLAUCONITE
- ORITE
- VOLCANIC
- SWELL FORAMS
- SILICEOUS
- CARBONACEOUS
- CAELCAEUS VERY CALCEAEUS
- DOLGAMIC VERY DOLGAMIC
- LIMESTONE TYPES:
 - M = Mottled
 - g = dense
 - S = Striated
 - P = Porous
 - F = Fractured
 - o = Oolitic
 - o = Oolitic
 - D = Dotted
 - L = Lumpy
 - m = microrstalline

NUMBER OF CORES NO CORE RECOVERED FORMATION 191522/1250 UNCOMFORMITY	SHOW OR STAIN HYDROCARBON CUT FLUORESCENCE GAS SHOW	DEVIATION SURVEY DIRECTIONAL SURVEY DIRMEFER SURVEY
---	--	---

S.P. G/R DEPTH	SPECIFIC ACOUSTIC TIME Micro Seconds Per Foot
	RESISTIVITY Ohms m/ft
Millivolts - 100 +	CONDUCTIVITY Millimos m
	INDUCTION RESISTIVITY 40' SPACING
INDUCTION CONDUCTIVITY 40' SPACING	



S.P. & Coliper Millivolts - 100 +	INDUCTION RESISTIVITY 40' SPACING
	16' NORMAL INDUCTION CONDUCTIVITY 40' SPACING
DEPTH	RESISTIVITY Ohms m/ft
	CONDUCTIVITY Millimos m
SPECIFIC ACOUSTIC TIME Micro Seconds Per Foot	

Company: ESSO EXPLORATION AND PRODUCTION NORWAY INC.
 Well: 25/11-8
 Field: BALDER
 County: NORTH SEA
 State: SPRAY
 Drillers I.D.: 1525
 Log F.R.: 1525
 Log I.D.: 1522.3m
 Elevations:
 K.B.: 25m D.F.: 26.7m G.L.: 125.6m