

m-15



SEISMOGRAPH SERVICE (ENGLAND) LTD.

COMPANY : STATOIL
WELL : 15/9-18

LOCATION : 58° 21' 01.92" N
01 48 12.04 E

VERTICAL SEISMIC PROFILE
DISPLAYS 5.2 AND 6.2
POLARITY 1

TIME SCALE : 1S = 10CM
DEPTH SCALE : DISPLAY 5.2: 1:12000
DATE PROCESSED : DISPLAY 6.2: 10 TRACES PER INCH
MARCH 1984

FIELD ACQUISITION

DATE SHOT : 21-2-84
SOURCE : SINGLE BOLT AIRGUN (80 CU. IN.)
SOURCE DEPTH : 1000 BCMS MSL
GUN PRESSURE : 2000 PSI
SOURCE MONITOR : NEAR FIELD HYDROPHONE
WELL GEOPHONE : 13M BELOW MSL
RECORDING EQUIPMENT : GCH 100 HT
SAMPLE RATE : DCR/DCR
SURFACE ELEVATION : 2 MS
WATER DEPTH : 97M
VSP DATUM : MSL
DEPTH REFERENCE : KB AT 23M ABOVE MSL

PROCESSING SEQUENCE

DISPLAY 5.2 : DECONVOLVED UPGOING WAVEFIELD
EDIT
AUTOMATED TRACE ALIGNMENT
STACK OF CONSTANT DEPTH TRACES
SOURCE SIGNATURE DECONVOLUTION (350 MS WINDOW)
BANDPASS FILTER (5-80HZ, 18/24DB PER OCT.)
AMPLITUDE RECOVERY PROPORTIONAL TO T
DOWNGOING WAVE SUBTRACTION
FIRST ARRIVALS SHIFTED TO TWO-WAY TIME SUB DATUM
SPECIAL VSP DECONVOLUTION (750 MS DERIVATION WINDOW)
BANDPASS FILTER (5-80HZ 18/24DB PER OCT.)
9:1 MEDIAN PICK
POST MEDIAN FILTER (3-90HZ 18/24DB PER OCT.)
TRACE EQUALISATION (500MS WINDOW, 250MS OVERLAP)
PRIOR TO DISPLAY

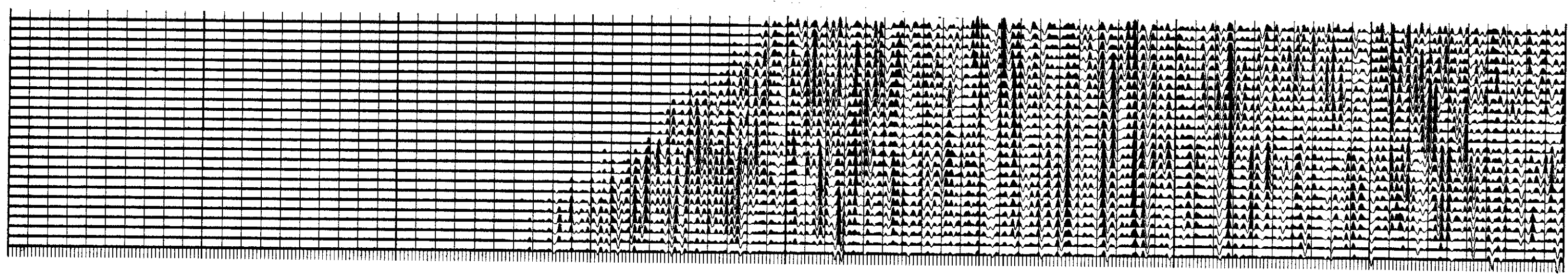
TRANSPPOSED VSP/ACOUSTIC IMPEDANCE LOG/
SYNTHETIC SEISMOGRAM
(DISPLAY 6.2)

(A) SYNTHETIC SEISMOGRAM
PRIMARIES WITHOUT TRANSMISSION LOSS TRACE
BANDPASS FILTER (AS ABOVE)
24 TRACE REPEAT
(B) ACOUSTIC IMPEDANCE LOG
DISPLAYED ALONGSIDE AT TWO-WAY TRAVEL TIME
(C) TRANSPPOSED VSP
AS FOR (DISPLAY 5.2) PLUS
DATA TRANSPPOSED WITH THE TIME DEPTH CURVE SHIFTED TO
POST MEDIAN FILTER (3-90HZ 18/24DB PER OCT.)
TRACE EQUALISATION (500MS WINDOW, 250MS OVERLAP)
24 TRACE DISPLAY

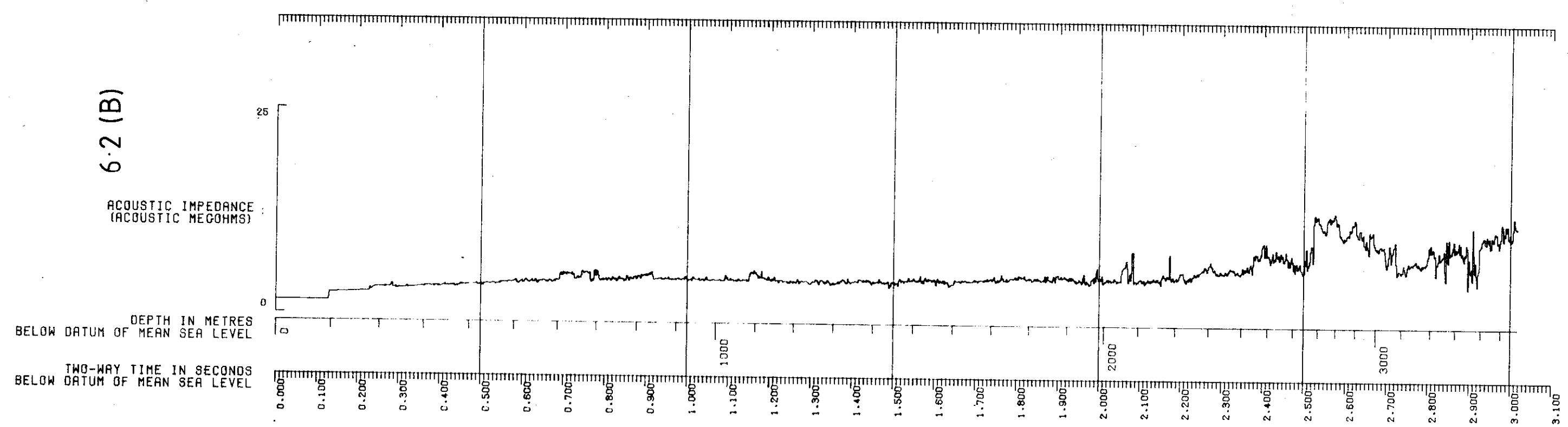
POLARITY 1
UPGOING COMPRESSION WAVE IS REPRESENTED BY A WHITE TROUGH
AND DOWNGOING FIRST ARRIVAL COMPRESSION WAVE IS A BLACK PEAK

DIP LITHO

6.2 (C)



6.2 (B)



6.2 (A)

