



SEISMOGRAPH SERVICE (ENGLAND) LTD.

COMPANY : STATOIL
WELL : 15/9-18

LOCATION : 58° 21' 01.92" N
01 48 12.04 E

VERTICAL SEISMIC PROFILE
DISPLAYS 5.2 AND 6.2
POLARITY 2

TIME SCALE : 15 = 10CM
DEPTH SCALE : DISPLAY 5.2:-1:12000
: DISPLAY 6.2:-10 TRACES PER INCH
DATE PROCESSED : MARCH 1984

FIELD ACQUISITION

DATE SHOT : 21-2-84
SOURCE : SINGLE BOLT AIRGUN (80 CU. IN.)
SOURCE DEPTH : 10M BELOW MSL
GUN PRESSURE : 2000 PSI
SOURCE MONITOR : NEAR FIELD HYDROPHONE
MONITOR DEPTH : 13M BELOW MSL
WELL GEOPHONE : GCH 100 HT
RECORDING EQUIPMENT : DCA/DCR
SAMPLE RATE : 2 MS
SURFACE ELEVATION : /
WATER DEPTH : 92M
USP DATUM : MSL
DEPTH REFERENCE : KB AT 23M ABOVE MSL

PROCESSING SEQUENCE

DISPLAY 5.2: DECONVOLVED UPGOING WAVEFIELD
EDIT
AUTOMATED TRACE ALIGNMENT
STACK OF CONSTANT DEPTH TRACES
SOURCE SIGNATURE DECONVOLUTION (350 MS WINDOW)
BANDPASS FILTER (5-80HZ, 18/24DB PER OCT.)
AMPLITUDE RECOVERY PROPORTIONAL TO T
DOWNGOING WAVE SUBTRACTION
FIRST ARRIVALS SHIFTED TO TWO-WAY TIME SUB DATUM
SPECIAL USP DECONVOLUTION (750 MS DERIVATION WINDOW)
BANDPASS FILTER (5-80HZ 18/24DB PER OCT.)
9.1 MEDIAN PICK
POST MEDIAN FILTER (3-90HZ 18/24DB PER OCT.)
TRACE EQUALISATION (500MS WINDOW, 250MS OVERLAP)
PRIOR TO DISPLAY

TRANSPOSED VSP/ACOUSTIC IMPEDANCE LOG/
SYNTHETIC SEISMOGRAM
(DISPLAY 6.2)

(A) SYNTHETIC SEISMOGRAM
PRIMARIES WITHOUT TRANSMISSION LOSS TRACE
BANDPASS FILTER (AS ABOVE)
24 TRACE REPEAT

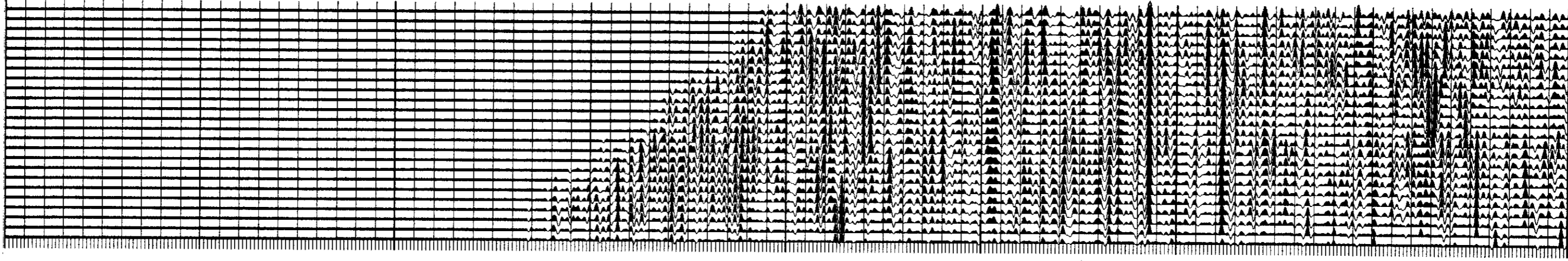
(B) ACOUSTIC IMPEDANCE LOG
DISPLAYED ALONGSIDE AT TWO-WAY TRAVEL TIME

(C) TRANSPOSED USP
AS FOR DISPLAY 5.2) PLUS
DATA TRANSPOSED WITH THE TIME DEPTH CURVE SHIFTED TO
LEFT EDGE OF DISPLAY
POST MEDIAN FILTER (3-90HZ 18/24DB PER OCT.)
TRACE EQUALISATION (500MS WINDOW, 250MS OVERLAP)
24 TRACE DISPLAY

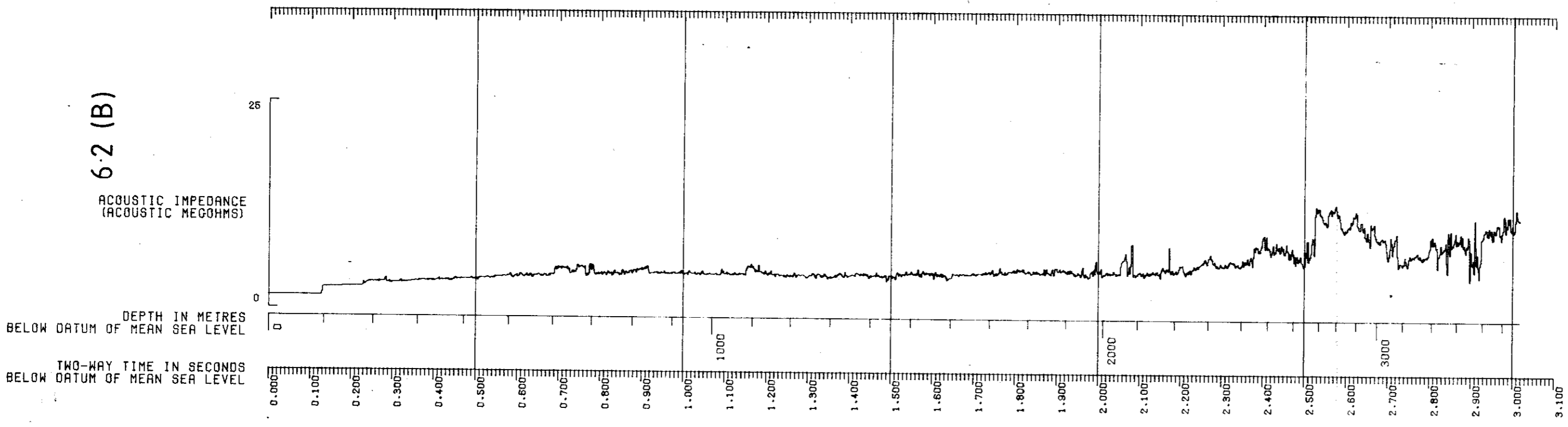
POLARITY 2
AN UPGOING COMPRESSION WAVE IS REPRESENTED BY A BLACK PEAK
A DOWNGOING FIRST ARRIVAL COMPRESSION WAVE IS A WHITE TROUGH

DIP LITHO

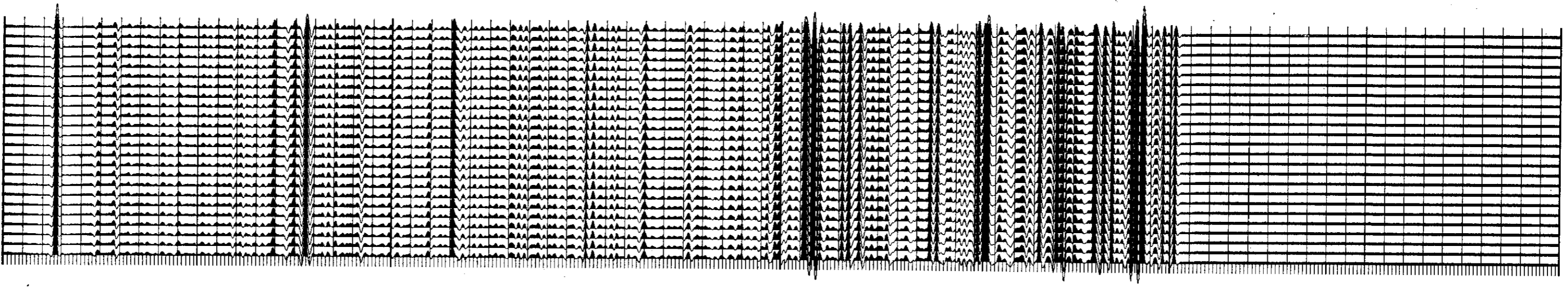
6.2 (C)



6.2 (B)



6.2 (A)



DISPLAY 5.2

