

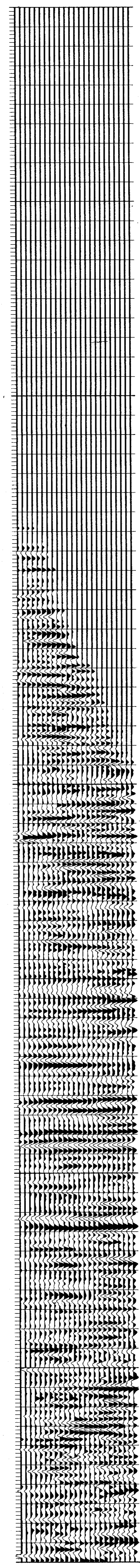
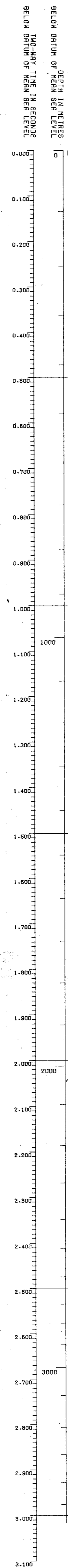
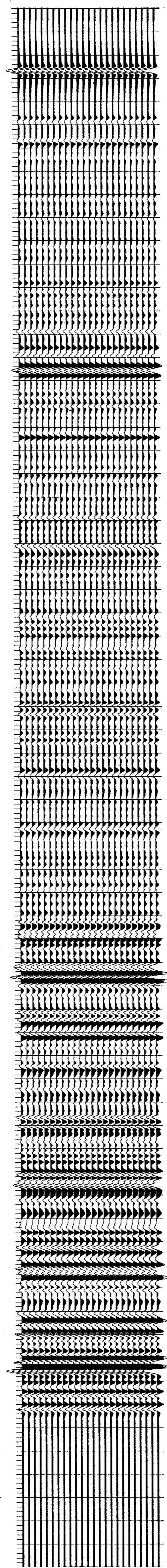
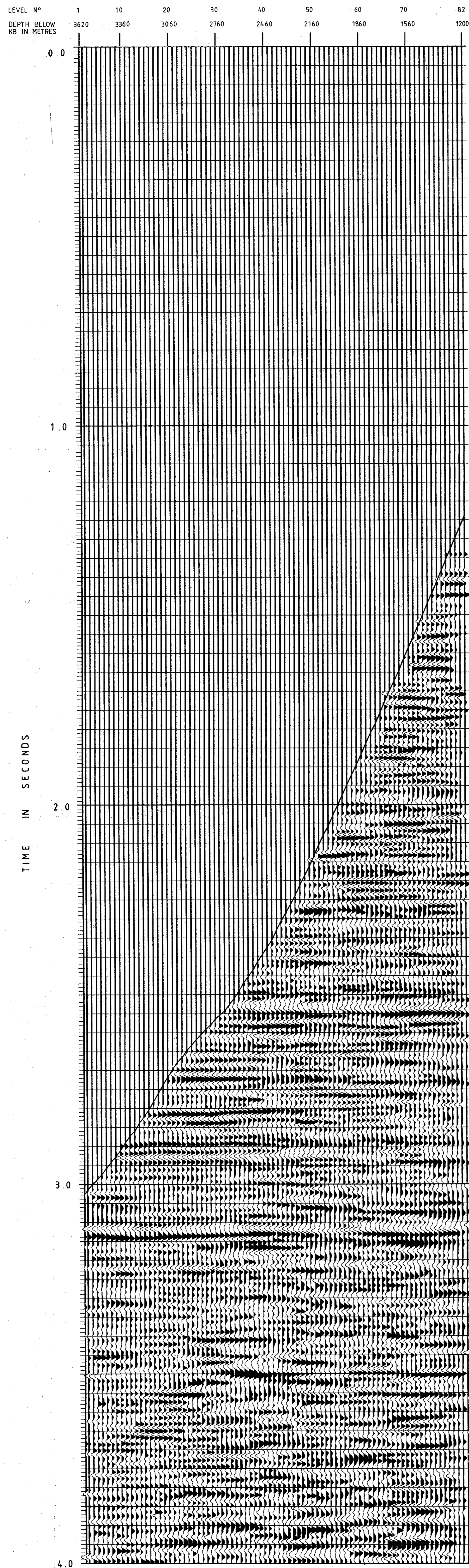
W 15

DISPLAY 5

6A

6B

6C



DIP	LITHO

SEISMOGRAPH SERVICE (ENGLAND) LTD.

COMPANY : STATOIL
 WELL : 15/9-18
 LOCATION : 58° 21' 01.92" N
 01 48 12.04 E
 VERTICAL SEISMIC PROFILE
 DISPLAYS 5 AND 6
 POLARITY 1

TIME SCALE : 1S = 20CM
 DEPTH SCALE : DISPLAY 5: 1:112000
 DISPLAY 6: 10 TRACES PER INCH
 DATE PROCESSED : MARCH 1984

FIELD ACQUISITION
 DATE SHOT : 21-2-84
 SOURCE : SINGLE BOLT AIRGUN (80 CU. IN.)
 SOURCE DEPTH : 10M BELOW MSL
 GUN PRESSURE : 2000 PSI
 SOURCE MONITOR : NEAR FIELD HYDROPHONE
 MONITOR DEPTH : 13M BELOW MSL
 WELL GEOPHONE : GCH 100 HT
 RECORDING EQUIPMENT : DCA/DCR
 SAMPLE RATE : 2 MS
 SURFACE ELEVATION : 97M
 WATER DEPTH : MSL
 VSP DATUM : KB AT 23M ABOVE MSL

PROCESSING SEQUENCE
 DISPLAY 5 : DECONVOLVED UPGOING WAVEFIELD
 EDIT
 AUTOMATED TRACE ALIGNMENT
 STACK OF CONSTANT DEPTH TRACES
 SOURCE SIGNATURE DECONVOLUTION (350 MS WINDOW)
 BANDPASS FILTER (5-80HZ; 18/24DB PER OCT.)
 AMPLITUDE RECOVERY PROPORTIONAL TO T
 DOWNGOING WAVE SUBTRACTION
 FIRST ARRIVALS SHIFTED TO TWO-WAY TIME SUB DATUM
 SPECIAL VSP DECONVOLUTION (750MS DERIVATION WINDOW)
 TIME VARIANT FILTER FROM SEISMIC SECTION (LINE ST0215-122)
 (10-60HZ; 18/24DB PER OCT 0.0-3.0S
 10-50HZ; 18/24DB PER OCT 3.05-END OF DATA)

9:1 MEDIAN PICK
 POST MEDIAN FILTER (3-70HZ 18/24DB PER OCT.)
 TRACE EQUALISATION (500MS WINDOW; 250MS OVERLAP)
 PRIOR TO DISPLAY

TRANSPPOSED VSP/ACOUSTIC IMPEDANCE LOG/
 SYNTHETIC SEISMOGRAM
 (DISPLAY 6)

(A) SYNTHETIC SEISMOGRAM
 PRIMARIES WITHOUT TRANSMISSION LOSS TRACE
 TIME VARIANT FILTER (AS ABOVE)
 24 TRACE REPEAT

(B) ACOUSTIC IMPEDANCE LOG
 DISPLAYED ALONGSIDE AT TWO-WAY TRAVEL TIME

(C) TRANSPPOSED VSP
 AS FOR (DISPLAY 5) PLUS
 DATA TRANSPPOSED WITH THE TIME DEPTH CURVE SHIFTED TO LEFT EDGE OF DISPLAY

POST MEDIAN FILTER (3-70HZ 18/24DB PER OCT.)
 TRACE EQUALISATION (500MS WINDOW; 250MS OVERLAP)
 24 TRACE DISPLAY

POLARITY 1
 AN UPGOING COMPRESSION WAVE IS REPRESENTED BY A WHITE TROUGH
 A DOWNGOING FIRST ARRIVAL COMPRESSION WAVE IS A BLACK PEAK