

m 15

SEISMOGRAPH SERVICE (ENGLAND) LTD.



COMPANY : STATOIL
 WELL : 15/9-18
 LOCATION : 58° 21' 01.92" N
 01 48 12.04 E
 VERTICAL SEISMIC PROFILE
 DISPLAYS 5.2 AND 6.2
 POLARITY 1

TIME SCALE : 15 : 20CT
 DEPTH SCALE : 1 : 11200
 DISPLAY : 8 : 10 TRACES PER INCH
 DATE PROCESSED : MARCH 1984

FIELD ACQUISITION

21-2-84 00T AIRGUN (60 CU. IN.)
 SOURCE DEPTH : 2000 FT.
 SOURCE MONITOR : NEAR FIELD HYDROPHONE
 MONITOR DEPTH : 24 300 FT. MSL
 RECORDING EQUIPMENT : DCA/DCR
 SAMPLE RATE : 2 MS
 SURFACE VELOCITY : 97M
 VSP DATUM : MSL
 DEPTH REFERENCE : KB AT 23M ABOVE MSL

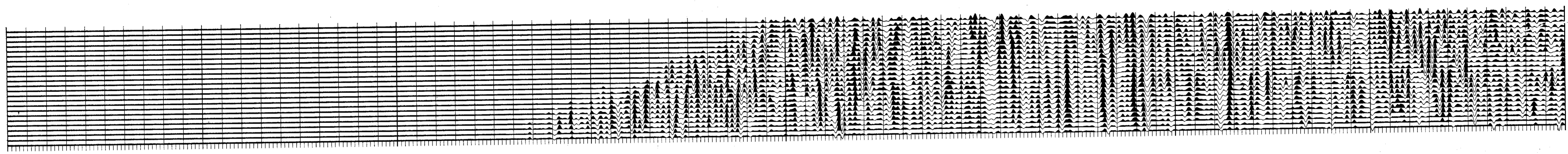
PROCESSING SEQUENCE

DISPLAY 5.2 : DECONVOLVED UPDIPING WAVEFIELD
 EDITED TRACE ALIGNMENT
 STACK OF CONSTANT DEPTH TRACES
 SOURCE SIGNATURE DECONVOLUTION (360 MS WINDOW)
 BANDPASS FILTER (5-30 HZ) PREPARED (GNL TO T)
 DOKINGING HAVE SUBTRACTED TO CLEAR DECONVOLUTION WINDOW
 FIRST ARRIVALS SHIFTED TO THE LEFT (SUB DATUM)
 BANDPASS FILTER (5-30 HZ) 19/2408 PER OCT.
 911 MEDIAN PICK
 POST-MEDIAN FILTER (3-90 HZ) 18/2408 PER OCT.
 900MS WINDOW 250MS OVERLAP
 PRIOR TO DISPLAY
 TRANSPPOSED VSP/ACOUSTIC IMPEDANCE LOG
 (DISPLAY 6.2)
 (A) SYNTHETIC SEISMOGRAM
 PRIMARIES WITHOUT TRANSMISSION LOSS TRACE
 BANDPASS FILTER (AS ABOVE)
 24 TRACE REPEAT
 (B) ACOUSTIC IMPEDANCE LOG
 DISPLAYED ALONGSIDE AT TWO-WAY TRAVEL TIME
 AS FOR (A) ABOVE
 DATA TRANSPPOSED WITH THE TIME DEPTH CURVE SHIFTED TO
 LEFT EDGE OF DISPLAY
 POST-MEDIAN FILTER (3-90 HZ) 18/2408 PER OCT.
 900MS WINDOW 250MS OVERLAP
 24 TRACE DISPLAY

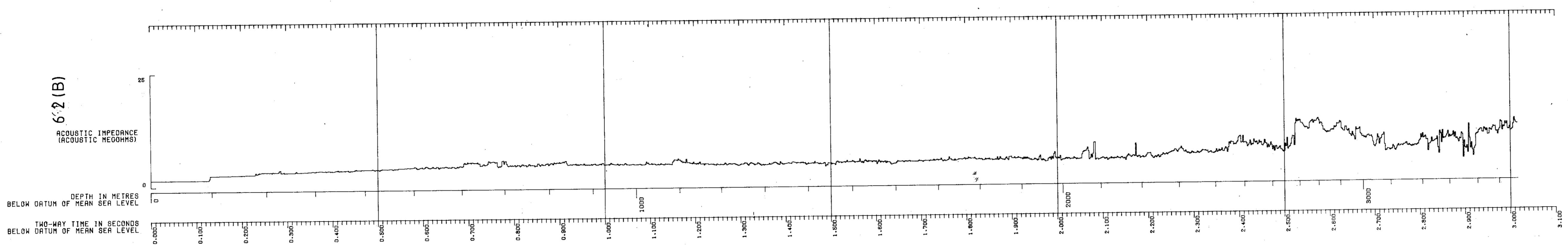
POLARITY 1
 AN UPDIPING COMPRESSION WAVE IS REPRESENTED BY A BLACK PEAK
 A DOWNDIPING FIRST ARRIVAL COMPRESSION WAVE IS A BLACK TROUGH

DIP LITHO

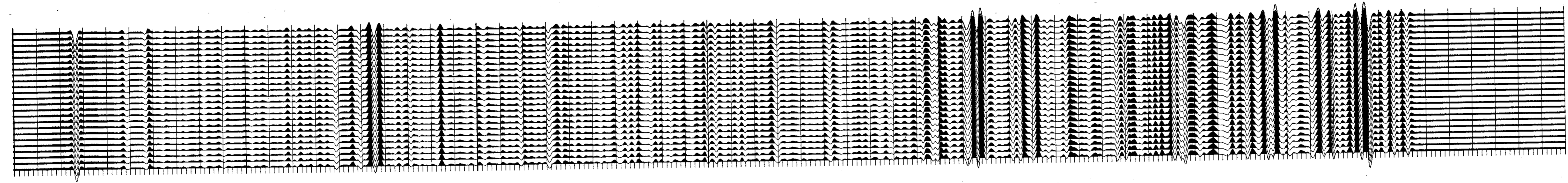
6.2 (C)



6.2 (B)



6.2 (A)



DISPLAY 5.2

