

BLOCK 15/9

LINE ST 8381-309

SP 1 - 965

NORTH

OFFSET PANEL  
OFFSET (M): 02, 187, 337, 487 & 612

FIELD RECORDING PARAMETERS

DATA SHOT BY: MERLIN A/VI (GUN FINDER)  
RECORDING POLARITY: REFLECTIVE PRESSURE AT THE GEOPHONE PRODUCES  
A POSITIVE SIGNAL ON THE FIELD TAPE  
RECORD LENGTH: 100 METRES  
RECORD SAMPLE RATE: 100 SAMPLES PER SECOND  
RECORD SAMPLE PERIOD: 10 MS  
RECORD SAMPLES PER TRIGGER: 1000  
RECORD SAMPLES PER GROUP: 100  
RECORD SAMPLES PER TRIGGER GROUP: 1000  
RECORD SAMPLES PER TRIGGER GROUP: 1000  
RECORD SAMPLES PER TRIGGER GROUP: 1000

PROCESSING PARAMETERS

DATA PROCESSED BY: STATOIL SEISMIC PROCESSING CENTRE  
POLARITY CONVENTION: THE POLARITY OF THE FIELD RECORDING WAS  
PRESERVED THROUGHOUT THE PROCESSING  
SIGNAL FILTERS: 100 HZ  
CDP SORT: YES  
TABLE SORT: YES  
GAIN CORRECTION: 20 DB, 0.0, 0.2, 0.5

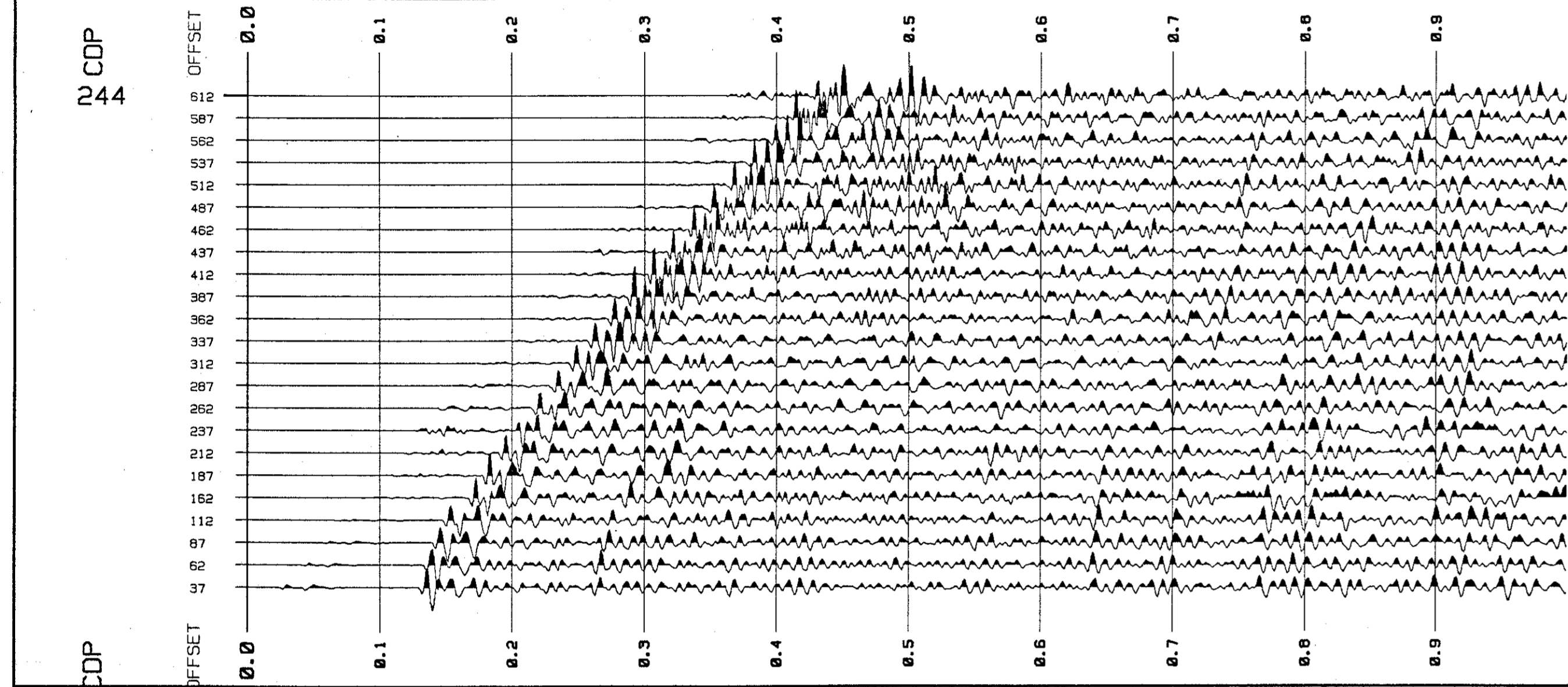
PROCESSING SUPERVISOR: J. C. E.

PROCESSED BY: J. E. H.

DEC. 1985

DISPLAY PARAMETERS

POLARITY: REFLECTIVE  
AMPLITUDE SCALE: 100  
GAIN: 100  
SEA LEVEL: 00 TRACES/ARR



↓ CDP POSITION FOR SOURCE OVER WELL LOCATION

↑ CDP POSITION FOR RECEIVER OVER WELL LOCATION

↙ H POSSIBLE HIGH VELOCITY LAYER

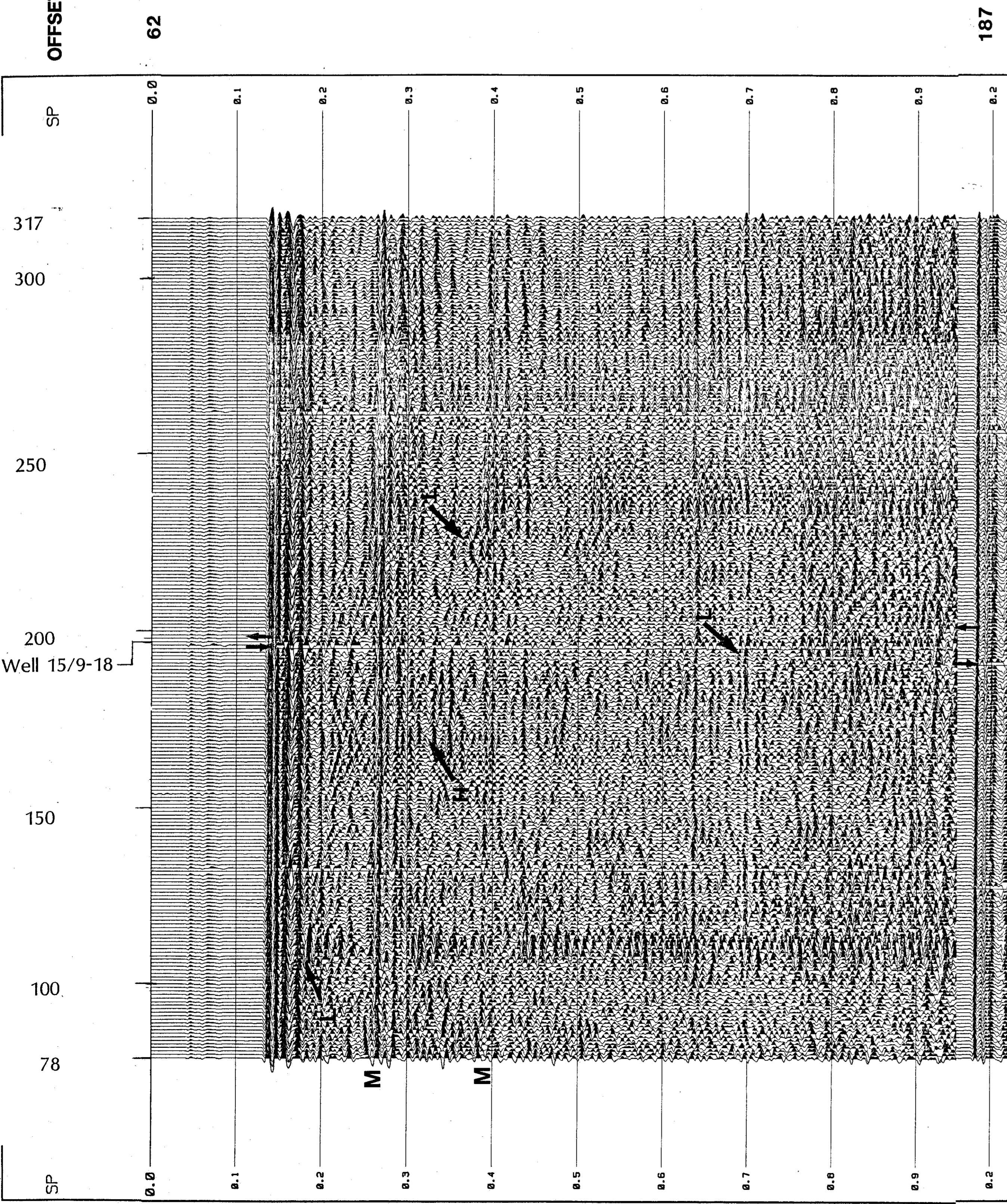
↘ L POSSIBLE LOW VELOCITY LAYER

↔ RD REFRACTION DELAY

↔ C POSSIBLE CHANNEL

M WATER BOTTOM MULTIPLE

WB WATER BREAK (DIRECT WAVE IN WATER)



187

337

487

612