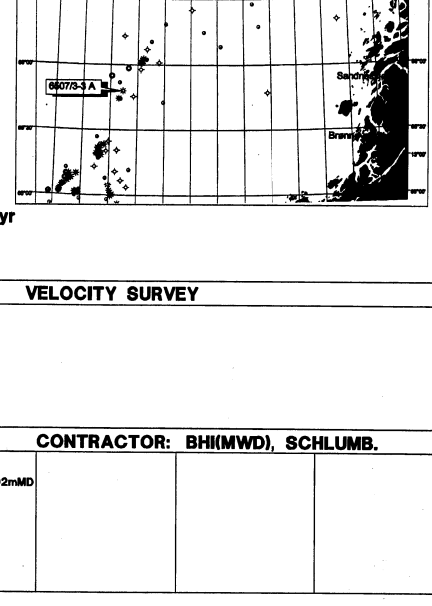


AREA: Norwegian North Sea  
 LOCATION: 65° 48' 03.73" N  
 COORDINATES: 07° 43' 28.69" E  
 KB: 25m  
 WATER DEPTH: 389m  
 TOTAL DEPTH: 4528m MDRT  
 FM AT T.D.: Melke Formation  
 SPUD DATE: 23-03-98  
 RIG RELEASE: 20-06-99  
 WELL STATUS: P & A - gas discovery  
 RIG: Byford Dolphin  
 CONTRACTOR: Dolphin Doc AS  
 GEOLOGISTS: Humnes, Lauritzen, Winneid, Beyer, Kjettenen, Bjerkenes, Furny



PREPARED BY: I. Winneid

CASING DATA	LEAK OFF TESTS	VELOCITY SURVEY
3 1/2" casing 476 mMD	128 S.G.	
5 1/2" casing 687 mMD	158 S.G. (FIT)	
9 5/8" casing 3794 mMD	158 S.G. (FIT)	

LOGS RUN		CONTRACTOR: BHIMWD, SCHLUMB.	
MWD TRIPLE COMBO	MDT-GR	DE-GR	
Run 1: 3800-3870mMD	Run 1: 3800-3870mMD	Run 1: 3800-3870mMD	

COMMENTS: 6507/3-3 at 1785 mMD RT  
 MWD density started to fall at 4170 mMD RT

LITHOLOGICAL SYMBOLS

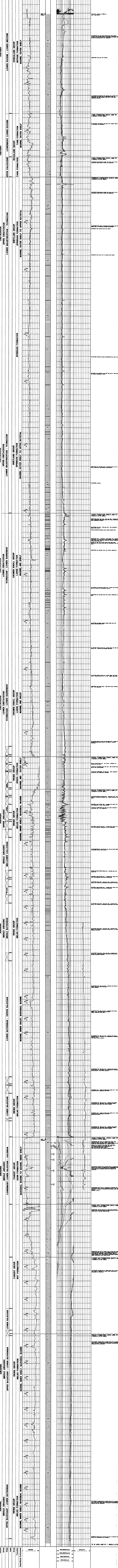
GRAVEL	SAND	CLAY	SHALE	SLT. SAND	SLT. CLAY	SLT. SILT	SLT. SHALE
GRAVEL	SAND	CLAY	SHALE	SLT. SAND	SLT. CLAY	SLT. SILT	SLT. SHALE

OUTLINE SYMBOLS

WELL	WELL HEAD	WELL HEAD	WELL HEAD
WELL	WELL HEAD	WELL HEAD	WELL HEAD

Well Log

Strat	Litho	Well Log	Lithological Descriptions
-------	-------	----------	---------------------------



Temperature measurements

Depth (m)	Temperature (°C)
100	10.2
200	10.5
300	10.8
400	11.2
500	11.5
600	11.8
700	12.2
800	12.5
900	12.8
1000	13.2
1100	13.5
1200	13.8
1300	14.2
1400	14.5
1500	14.8
1600	15.2
1700	15.5
1800	15.8
1900	16.2
2000	16.5
2100	16.8
2200	17.2
2300	17.5
2400	17.8
2500	18.2
2600	18.5
2700	18.8
2800	19.2
2900	19.5
3000	19.8
3100	20.2
3200	20.5
3300	20.8
3400	21.2
3500	21.5
3600	21.8
3700	22.2
3800	22.5
3900	22.8
4000	23.2
4100	23.5
4200	23.8
4300	24.2
4400	24.5
4500	24.8

Formation pressure (kPa)

Depth (m)	Pressure (kPa)
100	100
200	200
300	300
400	400
500	500
600	600
700	700
800	800
900	900
1000	1000
1100	1100
1200	1200
1300	1300
1400	1400
1500	1500
1600	1600
1700	1700
1800	1800
1900	1900
2000	2000
2100	2100
2200	2200
2300	2300
2400	2400
2500	2500
2600	2600
2700	2700
2800	2800
2900	2900
3000	3000
3100	3100
3200	3200
3300	3300
3400	3400
3500	3500
3600	3600
3700	3700
3800	3800
3900	3900
4000	4000
4100	4100
4200	4200
4300	4300
4400	4400
4500	4500

Samples collected

Depth (m)	Sample No.	Sample Type	Analysis
100	100	Core	Grain
200	200	Core	Grain
300	300	Core	Grain
400	400	Core	Grain
500	500	Core	Grain
600	600	Core	Grain
700	700	Core	Grain
800	800	Core	Grain
900	900	Core	Grain
1000	1000	Core	Grain
1100	1100	Core	Grain
1200	1200	Core	Grain
1300	1300	Core	Grain
1400	1400	Core	Grain
1500	1500	Core	Grain
1600	1600	Core	Grain
1700	1700	Core	Grain
1800	1800	Core	Grain
1900	1900	Core	Grain
2000	2000	Core	Grain
2100	2100	Core	Grain
2200	2200	Core	Grain
2300	2300	Core	Grain
2400	2400	Core	Grain
2500	2500	Core	Grain
2600	2600	Core	Grain
2700	2700	Core	Grain
2800	2800	Core	Grain
2900	2900	Core	Grain
3000	3000	Core	Grain
3100	3100	Core	Grain
3200	3200	Core	Grain
3300	3300	Core	Grain
3400	3400	Core	Grain
3500	3500	Core	Grain
3600	3600	Core	Grain
3700	3700	Core	Grain
3800	3800	Core	Grain
3900	3900	Core	Grain
4000	4000	Core	Grain
4100	4100	Core	Grain
4200	4200	Core	Grain
4300	4300	Core	Grain
4400	4400	Core	Grain
4500	4500	Core	Grain