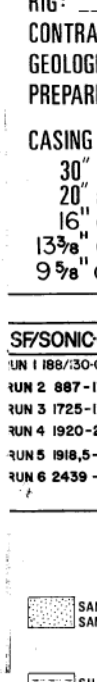


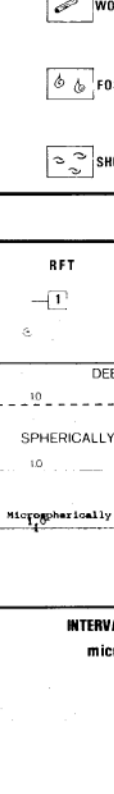
COMPLETION LOG

DIGITAL WIRELINE LOG PACKAGE  
DATE: 24. 11. 1980  
WELL: 30/6-1  
DATE: 10-3-1975



statoil / ELF, NORSK HYDRO, SAGA, TOTAL, MOBIL  
30/6-1  
COMPLETION LOG  
Scale 1:500

COORDINATES: 60° 33' 15.10" N  
02° 46' 38.36" E  
K.B.: 25 m  
WATER DEPTH: 105.5 m (MSL)  
TOTAL DEPTH: 3175 m RKB



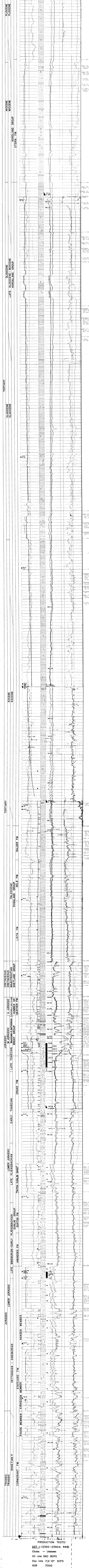
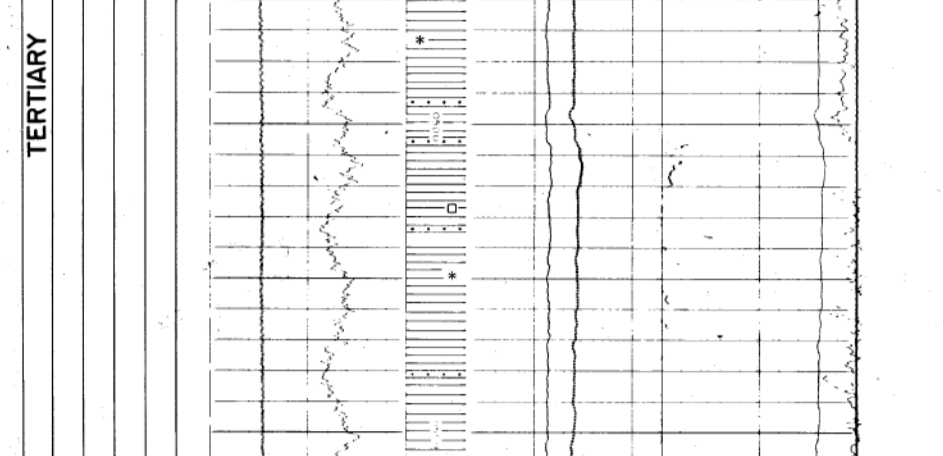
DEEPT FORM. PEN.: CORMORANT FM (TRIASSIC)  
RIG DATE: JUNE, 18, 1979  
WELL RELEASE DATE: SEPT. 22, 1979  
RIG STATUS: PLUGGED & ABANDONED  
RIG: ODFJELL DRILLING Co.  
GEOLOGISTS: F. LERNUM, M. HELLE, B. M. LARSEN  
PREPARED BY: K. ABRAHAMSEN  
DATE: MARCH, 6th 1980

CASING DATA:  
30 at 189.5 m  
20 at 887.0 m  
16 at 1724.0 m (liner)  
13 at 1920.0 m  
9 at 2443.0 m

VELOCITY SURVEY: 24 checksots, levels from 608m to 3170m by SSL

SFZSON	GR-GR	FC-GR	CALL	MSL-GR	GR-GR	CALL	MSL-GR	GR-GR	CALL	MSL-GR	GR-GR	CALL	MSL-GR	GR-GR	CALL	MSL-GR	GR-GR	CALL	MSL-GR
RUN 1	189.5-192.0	RUN 1	189.5-192.0	RUN 1	189.5-192.0	RUN 1	189.5-192.0	RUN 1	189.5-192.0	RUN 1	189.5-192.0	RUN 1	189.5-192.0	RUN 1	189.5-192.0	RUN 1	189.5-192.0	RUN 1	189.5-192.0
RUN 2	192.0-195.0	RUN 2	192.0-195.0	RUN 2	192.0-195.0	RUN 2	192.0-195.0	RUN 2	192.0-195.0	RUN 2	192.0-195.0	RUN 2	192.0-195.0	RUN 2	192.0-195.0	RUN 2	192.0-195.0	RUN 2	192.0-195.0
RUN 3	195.0-200.0	RUN 3	195.0-200.0	RUN 3	195.0-200.0	RUN 3	195.0-200.0	RUN 3	195.0-200.0	RUN 3	195.0-200.0	RUN 3	195.0-200.0	RUN 3	195.0-200.0	RUN 3	195.0-200.0	RUN 3	195.0-200.0
RUN 4	200.0-210.0	RUN 4	200.0-210.0	RUN 4	200.0-210.0	RUN 4	200.0-210.0	RUN 4	200.0-210.0	RUN 4	200.0-210.0	RUN 4	200.0-210.0	RUN 4	200.0-210.0	RUN 4	200.0-210.0	RUN 4	200.0-210.0
RUN 5	210.0-240.0	RUN 5	210.0-240.0	RUN 5	210.0-240.0	RUN 5	210.0-240.0	RUN 5	210.0-240.0	RUN 5	210.0-240.0	RUN 5	210.0-240.0	RUN 5	210.0-240.0	RUN 5	210.0-240.0	RUN 5	210.0-240.0
RUN 6	240.0-317.5	RUN 6	240.0-317.5	RUN 6	240.0-317.5	RUN 6	240.0-317.5	RUN 6	240.0-317.5	RUN 6	240.0-317.5	RUN 6	240.0-317.5	RUN 6	240.0-317.5	RUN 6	240.0-317.5	RUN 6	240.0-317.5

LITHOLOGIC SYMBOLS	
	SANDSTONE
	LIMESTONE
	ANHYDRITE
	FORAMS
	PYRITE
	MICA
	SILTSTONE
	CHALK
	TOTAL LIGNITE
	WOOD FRAGS
	GLAUCONITE
	STYLOLITES
	SILT CLAYSTONE
	DOLOMITE
	TUFF
	FOSSILIF. G.L.
	CHERT
	BURROWS
	SHALE
	MARL
	SALT
	SHELL FRAGS
	SIDERITE
	SNOW
	SNOW OR STEMS
	HYDROCARBON CUT
	FLUORESCENCE
	GAS



PRODUCTION TESTS:

DST 1: (2320-2330m RKB)  
Choke - Unknown  
Oil rate 960 BOPD  
Gas rate 172.10<sup>4</sup> SCFD  
GOR 17.20  
P Oil 58.9° API  
P Gas 0.657

DST 2: (2301-2305m RKB)  
Choke - Unknown  
Oil rate 1042 BOPD  
Gas rate 23.3.10<sup>4</sup> SCFD  
GOR 23300  
P Oil 53.5° API  
P Gas 0.663

RFT:

DEPTH	CORR. PRESSURE (PSI)	
	HYDROSTATIC	FORMATION
2335.5	5705	3974
2335.0	5705	4008
2334.0	5729	4018
2338.0	5692	3974
2210.8	5691	3972
2224.5	5689	4037
2545	4783	4312
2556	4804	4328
2577.5	4820	4341
2718	4847	4358
2728.5	5103	4598
2746	5126	4617
2782	5157	4641
2772	5187	4664
2808	5204	4676
2806	5268	4725
2869	5290	4743