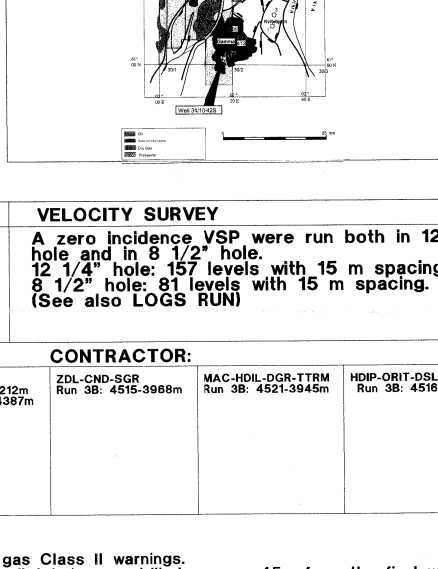


AREA: Norwedish North Sea
 LICENCE: PL050
 COORDINATES: 61° 00' 26.99" N, 3° 46' E
 KB: 24m
 WATER DEPTH: 135m
 TOTAL DEPTH: 159m
 FM AT Y.D.: 15th July 1999
 RIG RELIEF: 15th September 1999
 SPUD DATE: 15th July 1999
 RIG RELEASE: 15th September 1999
 WELL STATUS: Perm. P&A, dry well
 GEOLOGIST: Transocean Arctic
 CONTRACTOR: S.Bjerkenes, P.Farmy, O.Beyer,
 J. Johnson, P.Hovden, J.Basset,
 P.Kyby/Hurnes



CASING DATA

22.0	11000	MORKB
15.5	11650	MORKB
9.8	12250	MORKB
7.0	12850	MORKB
	13500	MORKB
	14150	MORKB
	14800	MORKB
	15450	MORKB

LOGS RUN

MAC-104-001	278-11	100-00	421-420
MAC-104-002	278-11	100-00	421-420
MAC-104-003	278-11	100-00	421-420
MAC-104-004	278-11	100-00	421-420
MAC-104-005	278-11	100-00	421-420
MAC-104-006	278-11	100-00	421-420
MAC-104-007	278-11	100-00	421-420
MAC-104-008	278-11	100-00	421-420

LEAK OFF TESTS

157	g/cc
2.09	g/cc
2.12	g/cc(H)

VELOCITY SURVEY

A zero incidence VSP were run both in 12 1/4" hole and in 9 1/2" hole
 12 1/4" hole: 157 levels with 15 m spacing
 9 1/2" hole: 51 levels with 15 m spacing
 (See also LOGS RUN)

COMMENTS

Well 34/10-42S had to be drilled deviated to avoid shallow gas Class II warnings. A zero incidence VSP were run both in 12 1/4" hole and in 9 1/2" hole and in 12 1/4" hole: 157 levels with 15 m spacing and in 9 1/2" hole: 51 levels with 15 m spacing. The location of the well was 2500m, but stuck pipe problems in lower part of Ulfsta Fm prevented plot hole drilling beyond 983m.

Planned well was not drilled within the pilot nor in the final well.

Biologically The creation of the Cretaceous may be inaccurate due to uncertainties with the palaeogeography.

Core no 2 depth shifted + 0.7 m, core no 1 no depth shifted

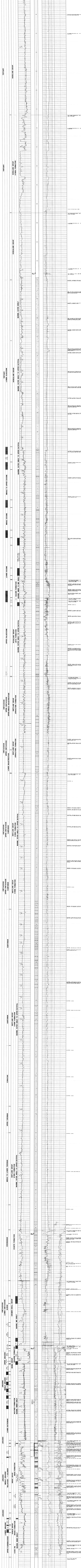
CONTRACTOR

MAC-104-001-100-00-421-420
 MAC-104-002-100-00-421-420
 MAC-104-003-100-00-421-420
 MAC-104-004-100-00-421-420
 MAC-104-005-100-00-421-420
 MAC-104-006-100-00-421-420
 MAC-104-007-100-00-421-420
 MAC-104-008-100-00-421-420

LITHOLOGICAL SYMBOLS

Well Log

Strat	Strat	Strat



Well Log

Lithological Descriptions