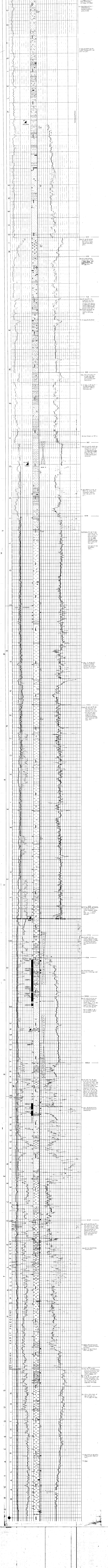
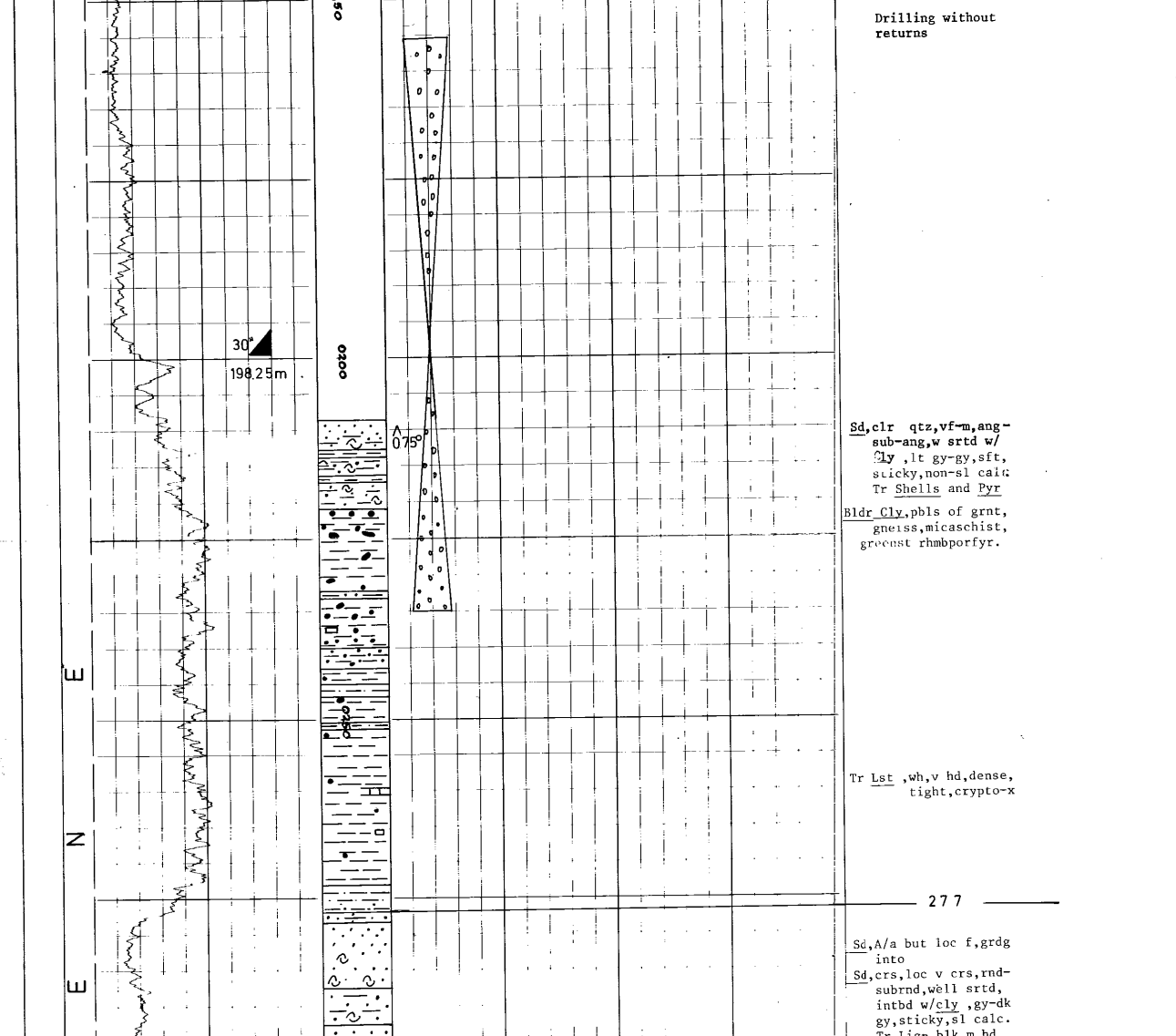


North-Hordaland 6139 Fisk
Year 1975
Country NORWAY
Licence 040
Scale 1:500
DATE ON LOCATION Aug 5th 1975
DATE DRILLED Oct 19th 1975
REACHED I.D. Nov 5th 1975
STATUS Plugged and abandoned
R/O Polyglomar Driller
MUDLOGGING The Analysts
COORDINATES N 60° 29' 26.00" E 02° 01' 40.96"
WATER DEPTH 113.1 m
ELEVATION AB 22.9 m
I.D. (OILERS) 2593.0 m
I.D. (LOGGERS) 2591.7 m
CASINO RECORD 37198m 37142m
120' (1000m) 120' (1000m) 7100m
REMARKS
GEOLOGISTS Rydberg, Sæve, Rivett-Carnac, Leivestad, Kille



Y C R E A T A S T A C E O U S
T O C E N E
P A L E O C E N E
E O C E N E
O L I G O C E N E
M I O C E N E
P L I O C E N E
P L E I S T O C E N E
Q U A T E R N A R Y