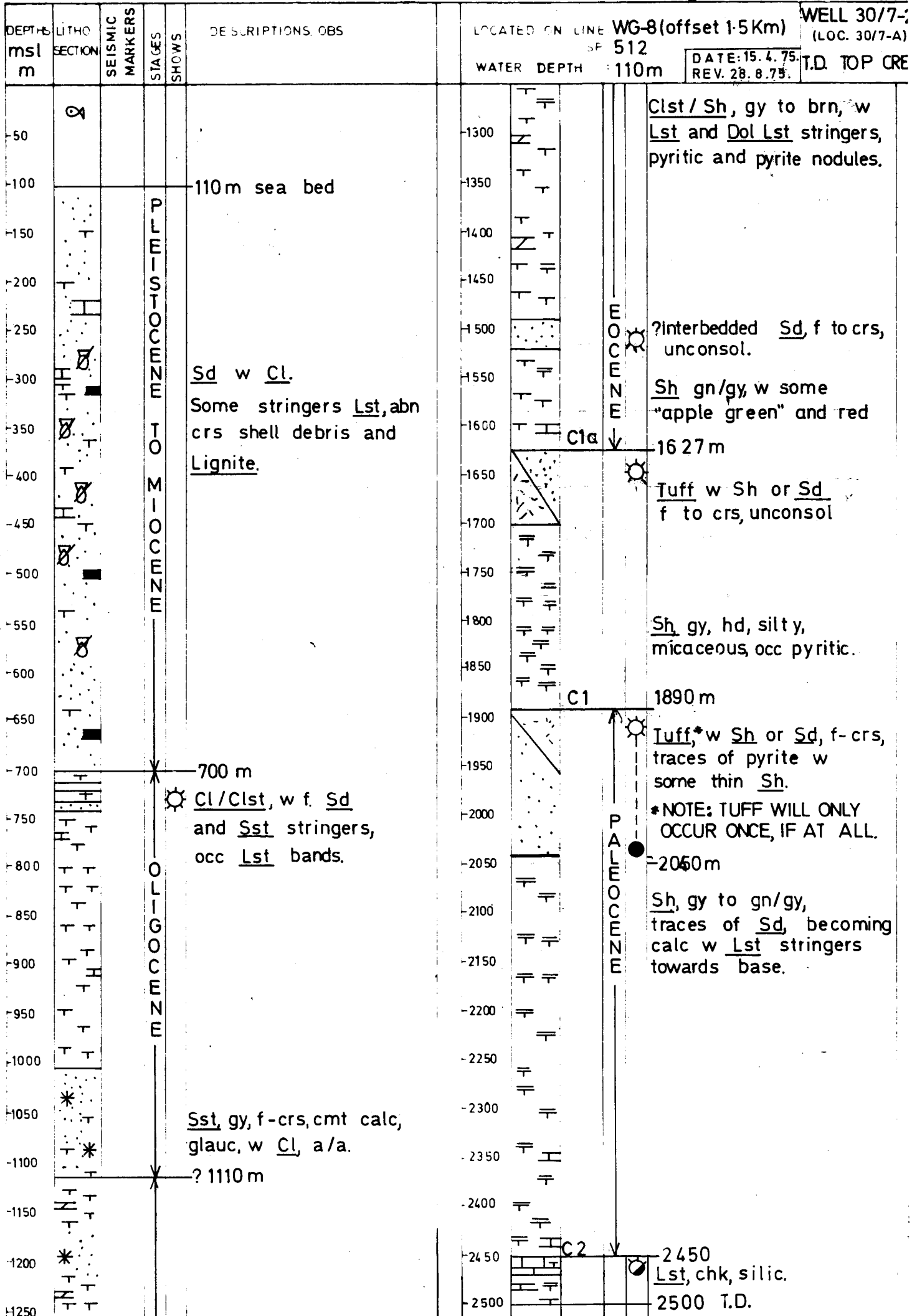
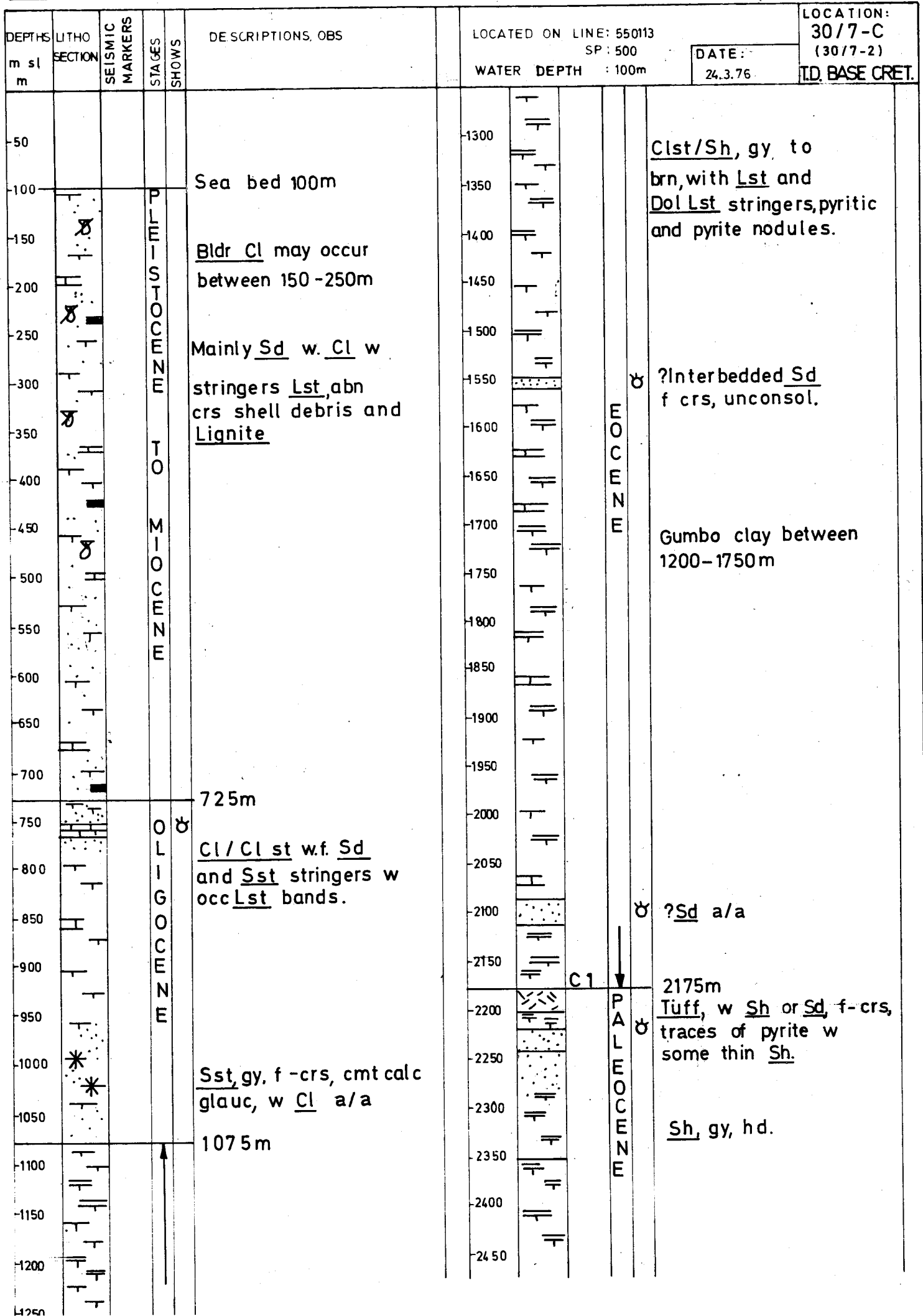


PROVISIONAL GEOLOGICAL PROGNOSIS

POSITION: Lat: 60° 29' 26" N
Long: 02° 01' 40" E



PROVISIONAL GEOLOGICAL PROGNOSIS

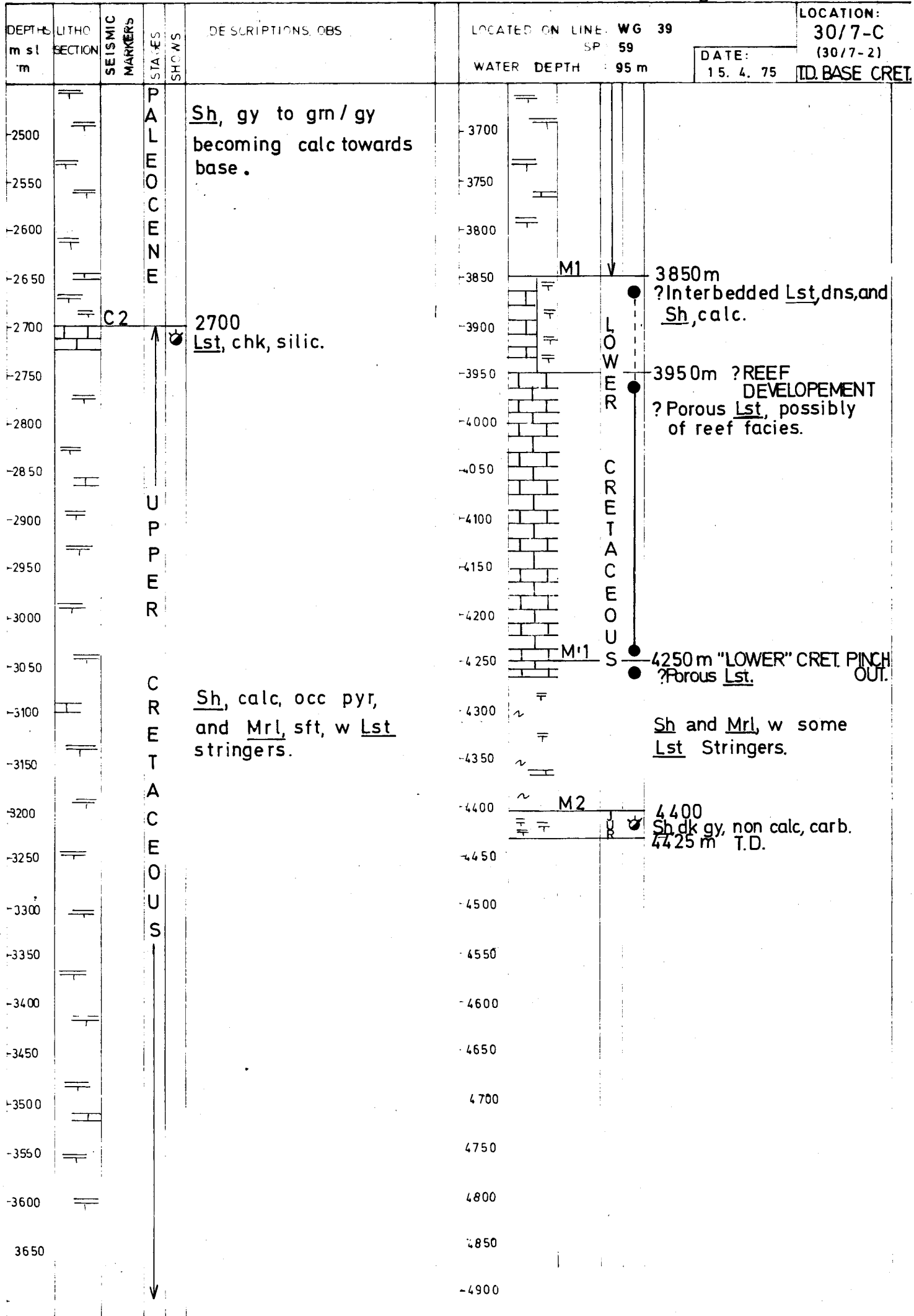


PROVISIONAL GEOLOGICAL PROGNOSIS

DEPTHS m sl m	LITHO SECTION	SEISMIC MARKERS	STAGES	SHOWS	DESCRIPTIONS, OBS	LOCATED ON LINE: 550113 SP: 500 WATER DEPTH 100m	DATE: 24.3.76	LOCATION: 30/7-C (30/7-2) T.D. BASE CRET.	
-2500 -2550 -2600 -2650 -2700 -2750 -2800 -2850 -2900 -2950 -3000 -3050 -3100 -3150 -3200 -3250 -3300 -3350 -3400 -3450 -3500 -3550 -3600 -3650			P A L E O C E N E U P P E R C R E T A C E O U S	↓	<p>Sh, gy to gm/gy becoming calc towards base.</p> <p>2700 Lst, chk, silic.</p> <p>Sh, calc, occ pyr, and Mrl, sft, w Lst stringers.</p>	3700 3750 3800 3850 3900 3950 4000 4050 4100 4150 4200 4250 4300 4350 4400 4450 4500 4550 4600 4650 4700 4750 4800 4850 4900		L O W E R C R E T A C E O U S	<p>M1</p> <p>3850m ? Interbedded Lst, dns, and Sh, calc.</p> <p>3950m ? REEF DEVELOPEMENT ? Porous Lst, possibly of reef facies.</p> <p>M'1</p> <p>4250m "LOWER" CRET. PINCH OUT. ? Porous Lst.</p> <p>Sh and Mrl, w some Lst Stringers.</p> <p>M2</p> <p>4400 Sh dk gy, non calc, carb. 4425m T.D.</p>

PROVISIONAL GEOLOGICAL PROGNOSIS

POSITION: Lat. 60° 16' 36" N
Long: 02° 12' 25" E

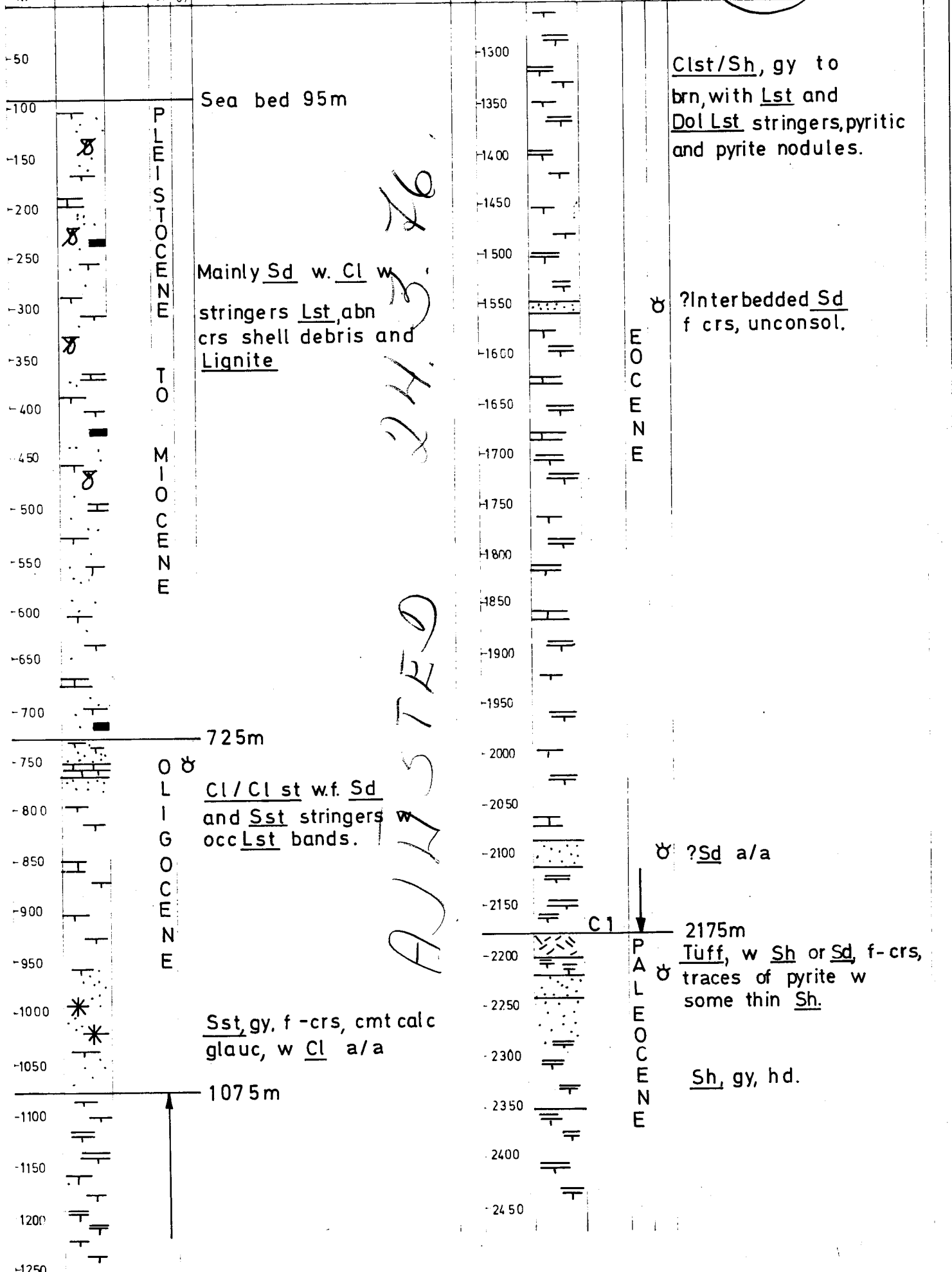


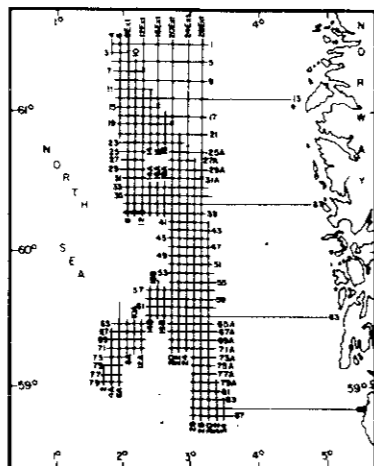
PROVISIONAL GEOLOGICAL PROGNOSIS

POSITION: Lat: 60° 16' 36" N
Long: 02° 12' 25" E

DEPTH m sl m	LITHO SECTION	SEISMIC MARKERS	STA. E. SHOWS	DESCRIPTIONS OBS	LOCATED ON LINE WG 39 59	WATER DEPTH 95m	LOCATION: 30/7-C (30/7-2) I.D. BASE CRET.
--------------------	------------------	--------------------	------------------	------------------	-----------------------------	-----------------	--

DATE: 15. 4. 75



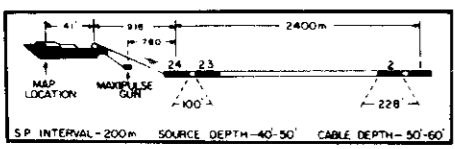


**WESTERN GEOPHYSICAL
COMPANY OF AMERICA**

AREA: OFFSHORE NORWAY

W.G.C. CONTRACT LDP-540
DATE FEB 1972
REEL NUMBER 68257A

Recording Data	Processing	Sequence and Parameters
PARTY NUMBER: W.G.C. P-61	1. EDIT- SAMPLE RATE - 4ms	4. N.W.O. STACK 2400
AMPLIFIER: SDS 1010 MOD 0	2. DEBUBBLE- SAMPLE RATE - 4ms	SAMPLE RATE - 4ms.
FILTER: 8.5-71 Hz	3. D.B.S. SAMPLE RATE 4ms	5. D.A.S. SAMPLE RATE - 4ms
ENERGY SOURCE: MAXIPULSE	1. TYPE- MIN PHASE INVERSE FILTER	1. TYPE- MIN PHASE INVERSE FILTER
CHARGE SIZE: 1/2 lb	WINDOW LENGTH 2 EQUAL ZONES TRACE	WINDOW LENGTH 2 EQUAL ZONES TRACE
GUN DEPTH: 40 - 50ft	OVERLAP 20 OF ZONE	OVERLAP 540 ms
CABLE NO OF GROUPS: 2400m 24 GROUPS	LENGTH AUTO CORR 284 ms	LENGTH AUTO CORR 340 ms
CABLE DEPTH: 50 - 60ft	LENGTH OPERATOR 184 ms	LENGTH OPERATOR 340 ms
LEAD IN: 780ft	MIN PREDICT LAG 100 ms	MIN PREDICT LAG 1st Zero Crossing
GROUP INTERVAL: 328ft		
GROUP LENGTH: 228ft		
GEOPHONES: 32 TAPERED ARRAY		
DATE SHOT: SEPT 1971		



LINE : WG-39

S.P. 07 TO S.P. 103

DATUM PLANE : SEA LEVEL

WEST

2400% DBS, DAS, TVF

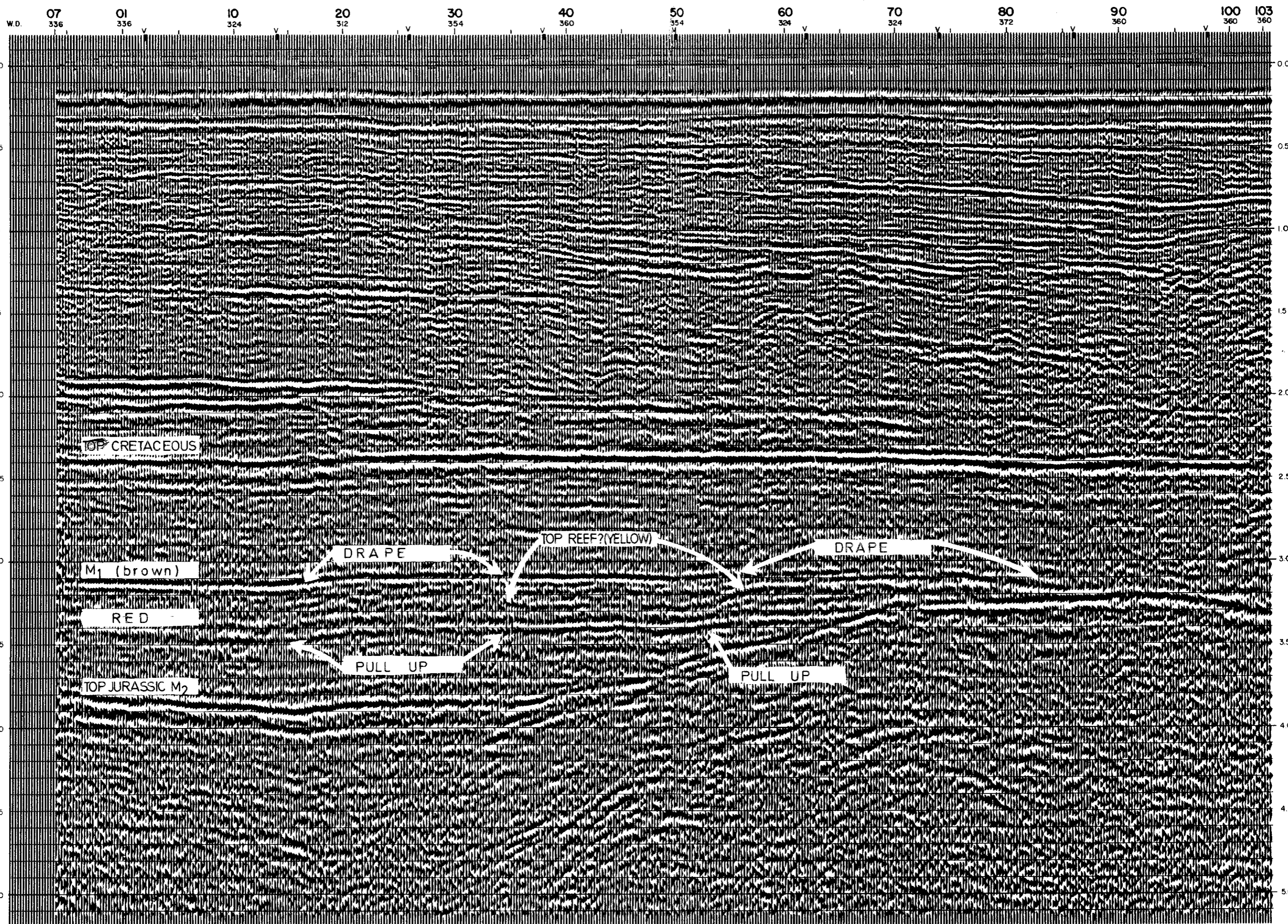
LEGEND:
 W.D. = Water Depths in Feet.
 V = Velocity Function Control Point.
 ■ = Velocity Analysis.

697
698

INTERSECTION LINE S.P. WG-8 634

INTERSECTION LINE S.P. WG-10 604

INTERSECTION LINE S.P. WG-12 576



N GEOPHYSICAL
Y OF AMERICA

AREA OFFSHORE NORWAY

W G C CONTRACT LDP 540
 DATE FEB 1972
 REC. NUMBER 68257A

LINE : WG-39

S.P. 07 TO S.P. 103

DATUM PLANE : SEA LEVEL

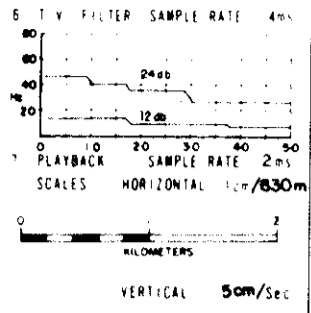
WEST

2400% DBS, DAS, TVF

LEGEND

- W.D. = Water Depth in Feet
- V = Velocity Function Control Point
- = Velocity Analysis

Data	Processing	Sequence	and	Parameters
W G C P 61 SDS 1010 MOD 0 B 5-71 M2 MAX. PULSE 5 LB 40 50F1 2400m 24 GROUPS 50 60F1 700F1 328F1 228F1 32 TAPERED ARRAY SEPT 1971	1 EDIT SAMPLE RATE 4ms 2 DEBUBBLE SAMPLE RATE 4ms 3 D B S SAMPLE RATE 4ms 1 TYPE MIN PHASE INVERSE FILTER WINDOW LENGTH 2 EQUAL ZONES TRACE OVERLAP 20% OF ZONE LENGTH AUTO CORR 284 ms LENGTH OPERATOR 184 ms MIN PREDICT LAG 100 ms	4 N M D STACK 2400 SAMPLE RATE 4ms 5 D A S SAMPLE RATE 4ms 1 TYPE MIN PHASE INVERSE FILTER WINDOW LENGTH 2 EQUAL ZONES TRACE OVERLAP 540 ms LENGTH AUTO CORR 340 ms LENGTH OPERATOR 340 ms MIN PREDICT LAG 1st Zero Crossing		6 T V FILTER SAMPLE RATE 4ms 7 PLAYBACK SAMPLE RATE 2ms SCALES HORIZONTAL 1cm/830m VERTICAL 5cm/Sec



INTERSECTION
 LINE S P
 WG-10 604

INTERSECTION
 LINE S P
 WG-12 576

