

MUD	DRILL RATE min/m x /					CORE	CUTTINGS				DEPTH	LITHO SECTION	AGE	DESCRIPTION	FLUO DIR.	GAS	DATE: 9/2	LOGS, BITS & CASING
	2	6	10	14	18		20	40	60	80								
											110			<u>30/7-5</u>				
											20			LOCATION:				
											30			02° 03' 27.40" E				
											40			60° 29' 30.19" N				
														Sea bed				
											150			<u>Sd</u>				
								*			60			Qty CLR, rnd - subang, m- of				
											70			tr glau, pyre, sm shell frags.				
											80			<u>Cly</u>				
								*			90			Dk gy - mdk gy, sft to firm				
											190			sfty, sl calc w/ blke, pbles				
											200			of reworked basement rock				
														(gnis & granite)				

140.5 m k.b.

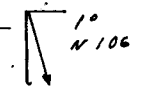
30" csq @ 190m  
 1" N?  
 Bit 2: Reed Y-11-6  
 17 1/2"

MUD	DRILL RATE $m^3/m \times'$					CORE	CUTTINGS				DEPTH	LITHO SECTION	DESCRIPTION	FLUO DIR.	CR	GAS %			LOGS, BITS & CASING	
	2	6	10	14	18		20	40	60	80						0.5	5	10		
	[Graph showing drill rate fluctuations]						[Graph showing cutting percentages]												30/7 - 5 DATE: /	
	[Graph showing drill rate fluctuations]						[Graph showing cutting percentages]				210		<u>Sd: (clr gtz)</u> rf-f, sub ang - sub rnd							1/26" UR
	[Graph showing drill rate fluctuations]						[Graph showing cutting percentages]				220		<u>Clay:</u> mdk gy - dk gy, firm, slty, sl calc							
	[Graph showing drill rate fluctuations]						[Graph showing cutting percentages]				230									
	[Graph showing drill rate fluctuations]						[Graph showing cutting percentages]				240									
	[Graph showing drill rate fluctuations]						[Graph showing cutting percentages]				250									
	[Graph showing drill rate fluctuations]						[Graph showing cutting percentages]				260									
	[Graph showing drill rate fluctuations]						[Graph showing cutting percentages]				270									
	[Graph showing drill rate fluctuations]						[Graph showing cutting percentages]				280									
	[Graph showing drill rate fluctuations]						[Graph showing cutting percentages]				290									
	[Graph showing drill rate fluctuations]						[Graph showing cutting percentages]				300									

Mud 192 m - 805 m: wt 9, vis 40, Y.P. 10 - 23  
SD clay

Restricted drilling 192 m - 805 m

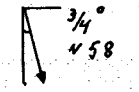
8/2 - 77



RPM: 130  
WOB: 1600

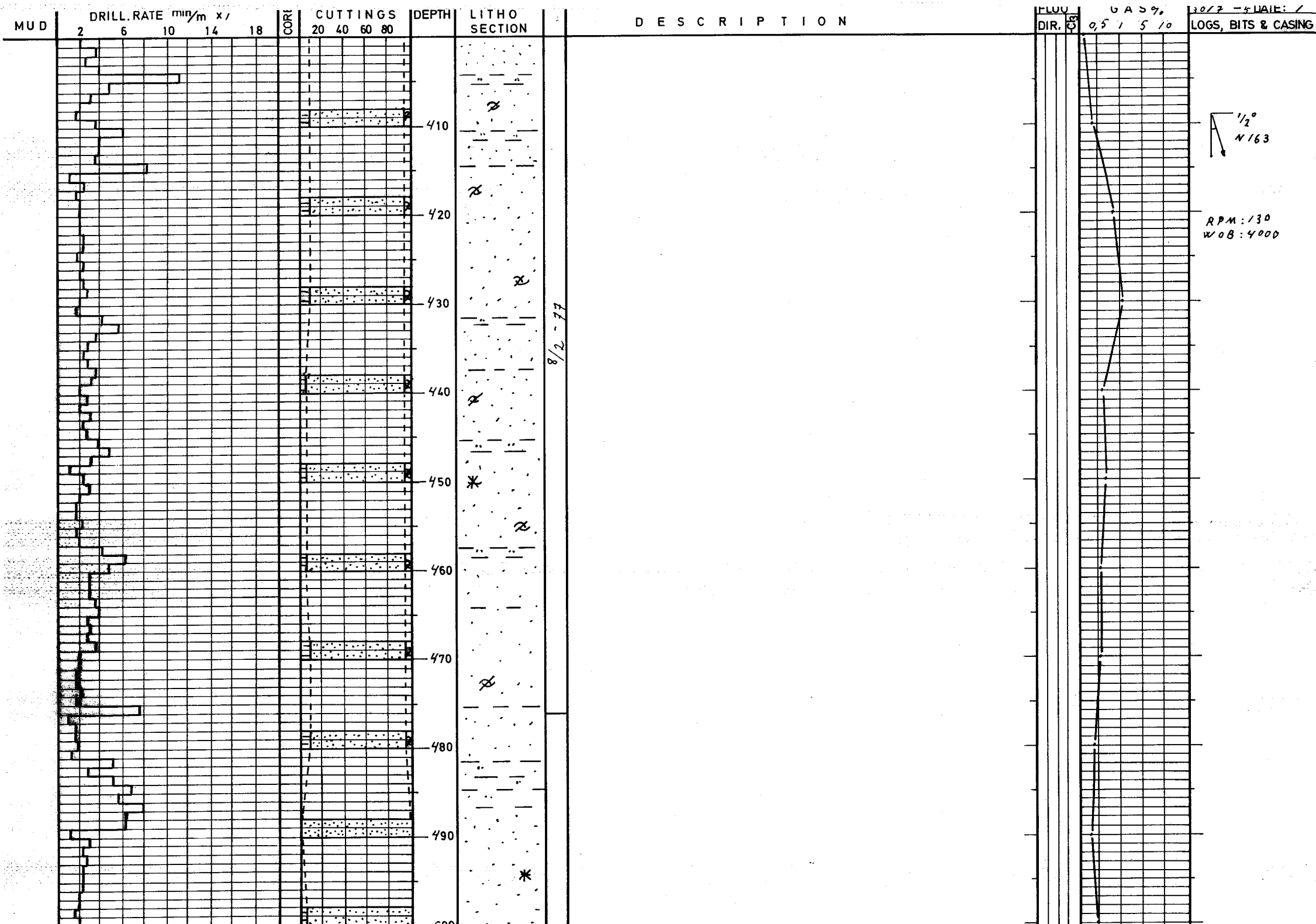
RPM: 140  
WOB: 2500

MUD	DRILL RATE min/m x/					CORE	CUTTINGS				DEPTH	LITHO SECTION	DESCRIPTION	FLUO		GAS %					LOGS, BITS & CASING					
	2	6	10	14	18		20	40	60	80				DIR.	GR	0.5	1	5	10							
												ϕ	Sd: v f-f, subang-subbrnd w/some crs mat and shell frags Tr glauc and mica													
											310	ϕ M	In tbd of CLY: m dk gy, firm-sft, slty													
											320	ϕ														
											330															
											340	ϕ														
											350	M														
											360	ϕ														
											370															
											380															
											390		Liq: brnisk blk-gyish brn, wood struc													



RPM: 130  
WOB: 3000



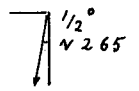


1/2°  
N163

RPM: 130  
WOB: 4000

MUD	DRILL RATE min/m x /					CORE	CUTTINGS				DEPTH	LITHO SECTION	DESCRIPTION	FLOW DIR.	GAS %				LOGS, BITS & CASING	
	2	6	10	14	18		20	40	60	80					0.5	1	5	10		
											510	*	<p><u>Sd:</u> (Clr gtz)  vf-crs, ang-rnd (Only crs mat rnd)  w/Glau: vdk - mqrn, nod ap  and shell frags: Bivalvs, gast</p>							
											520									
											530									
											540	*								
											550	*								
											560	*								
											570	*								
											580	*								
											590	*								
											600	*								

9/2 - 77



RPM: 128  
WOB: 2500

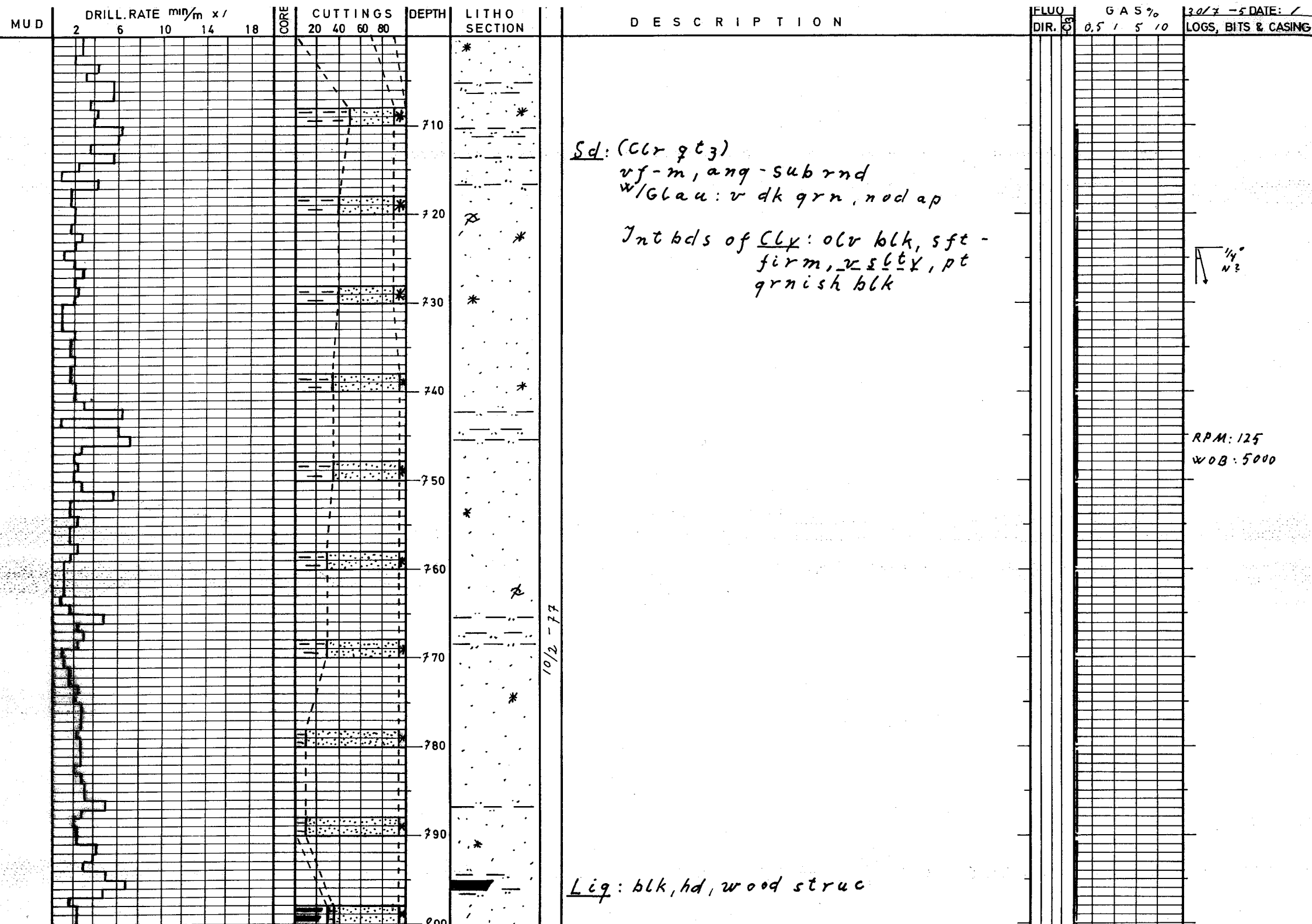
crs mat abn

MUD	DRILL RATE min/m x /					CORE	CUTTINGS				DEPTH	LITHO SECTION	DESCRIPTION	FLUID DIR.	GAS %				DATE / LOGS, BITS & CASING
	2	6	10	14	18		20	40	60	80					0.5	1	5	10	
																			1 1/4° N 216
											610								
											620	*							RPM: 130 WOB: 4000
											630								
											640	*							
											650								1° N?
											660	*	*						Bit 3: Reed Y-11-5 17 1/2" w/ 26" UR
											670	*							
											680	*	*						<i>Sd: (qtz)</i> <i>vf-m, sub ang-rnd (Some</i> <i>rcrs rnd)</i> <i>w/ Glauc vdk grn, nod ap and</i> <i>shell frags</i>
											690	*	*	*					<i>In thds of Cly: m dk gy, sft, slty</i>
											700	*	*	*					

*Sd: (qtz)*  
*vf-m, sub ang-rnd (Some*  
*rcrs rnd)*  
*w/ Glauc vdk grn, nod ap and*  
*shell frags*

*In thds of Cly: m dk gy, sft, slty*

*10/2-77*



Sd: (Clr qtz)  
vf-m, ang-sub rnd  
w/Glau: v dk grn, nod ap

Int bds of Clx: olv blk, sft -  
firm, relt, pt  
grnish blk

14°  
N 2

RPM: 125  
WOB: 5000

10/2 - 77

Liq: blk, hd, wood struc

