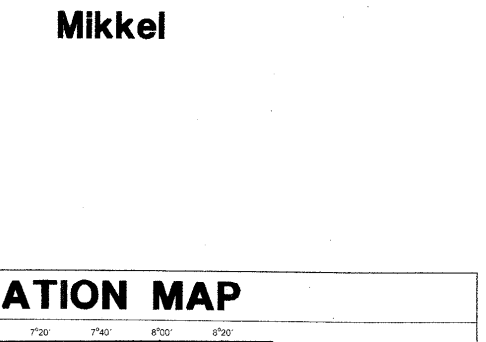
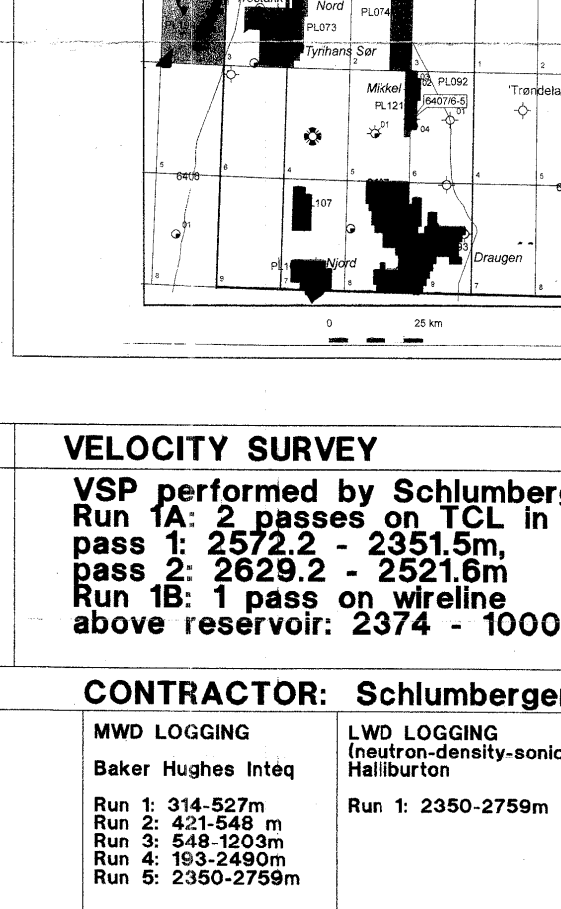


PARTNERS WELL FIELD
Mobil Expl. Norway Inc. 6407/6-5
Saga Petroleum ASA
Norsk Hydro Production A/S COMPOSITE LOG
(Hydro only partner in PL 121) 1 : 500



AREA: Haltenbanken
LICENCE: PL 092 / PL 121
COORDINATES: 04° 30' 34.79"N
07° 40' 03.87"E
KB: 25 m
WATER DEPTH: 225 m
TOTAL DEPTH: 2759 mMD RKB
FM AT I.D.: Tlje Fm
SPUD DATE: 15-11-1999
RIG RELEASE: 27-12-1999
WELL STATUS: Temp. P&A, oil & gas discovery
RELOGGIST: Byford Dolphin
CONTRACTOR: Dolphin A/S
GEOLOGISTS: Bayen, Basset, Klungseyr,
Hovden, Rasmussen, Krlatensen, Johnsen, Furmyr
PREPARED BY: Basset/Hunnes



CASING DATA LEAK OFF TESTS VELOCITY SURVEY

30° 9 5/8" 9 5/8"	310 225 1193 mMD mMD mMD	123 163 g/cc (FIT) g/cc (FIT)	VSP performed by Schlumberger. Run 1A: 2 passes on 1CL in reservoir, pass 1: 237.2 - 2521.6m Run 2: 2629.2 - 2521.6m Run 1B: 1 pass on above reservoir: 2374 - 1000m
-------------------------	---	--	---

LOGS RUN

PEX-AIT-051-GR	MDT-CR	VSP
Run 1A: 2390-1929m	Run 1A: 2382.5-2628.5m	Run 1A: 2529.2-2551.5m Run 1B: 2574-1000m

CONTRACTOR: Schlumberger/BHI/Halliburton

MWD LOGGING	LWD LOGGING
Baker Hughes Inteq	Schlumberger (BHI)
Run 1: 214-527m	Run 1: 2350-2759m
Run 2: 515-548m	
Run 3: 515-548m	
Run 4: 513-2492m	
Run 5: 513-2492m	
Run 6: 2350-2759m	

COMMENTS:
Shallow water flow with associated gas was observed at 527 m MD RKB, killed with 1.8 sg mud. The flow is expected to come at a sandy interval, 519 m to 524 m MD RKB. A cement plug was set and dressed down to 461 m MD RKB. The well started to flow again (water with associated gas) when displaced to sea water. It is assumed that the flow comes from somewhere between 451 m MD RKB. The flow was killed with 1.8 sg mud. A new cement plug was set and dressed down to 423 m MD RKB (no flow). Opened hole to fit 1 1/2" and set 19 3/8" casing at 421 m MD RKB.
MDT points not depth shifted on the Composite Log. The points should be shifted -1m to fit the log.
Core no 1 is depth shifted down 1.5 m and core no 2 is depth shifted down 1.7m to match the logs.

LITHOLOGICAL SYMBOLS

CONGLOMERATE	SHALE	MARL	COAL	FORAMS	MCA
SAND SANDSTONE	LIMESTONE	TUFF	WOOD FRAGS	SURROWS	KALMITE
SILT SILTSTONE	CHALK	SALT GYPS.	POSSIBLE GYPS.	FRITS	CHERT
SLAY CLAYSTONE	DOLomite	ANYRITE	SHELL FRAGS	GLAUCONITE	SEERITE

CUTTINGS/LITHOESCRIBE

ROTARY CORE	ROTARY SIDEWALL CORE	DIAMETER	DEPTH	DESCRIPTION
-------------	----------------------	----------	-------	-------------

Well Log

Chron Strat	Litho Strat	Well Log	Lithological Descriptions
-------------	-------------	----------	---------------------------

